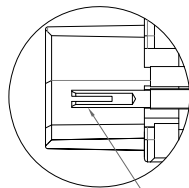
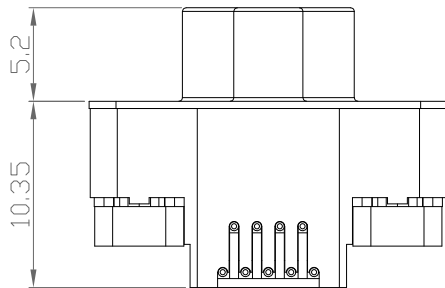
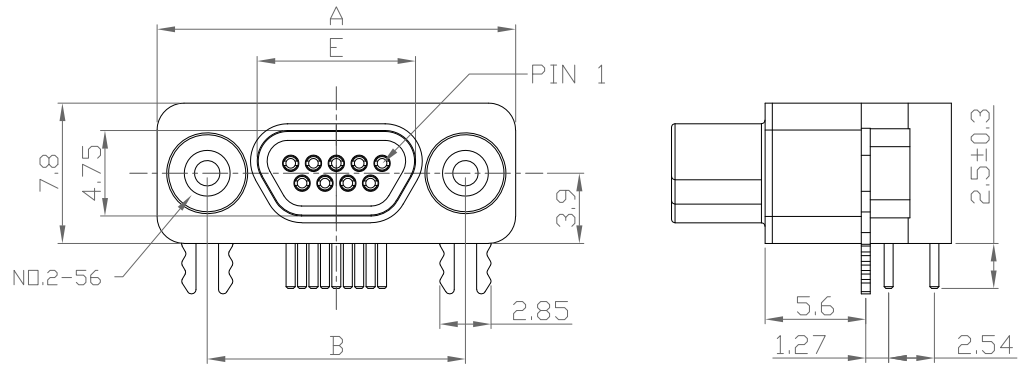
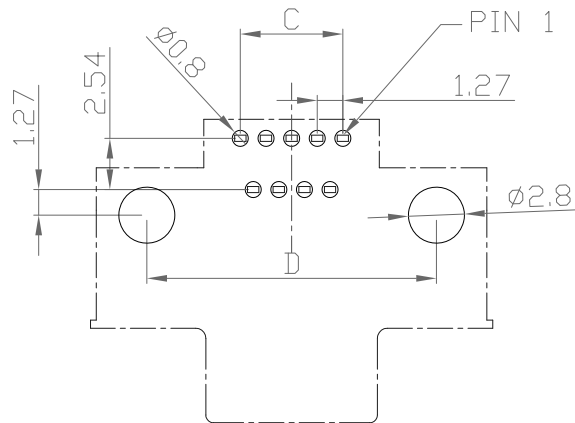


DESCRIPTION: MACHINED MICRO-D // RIGHT ANGLE SOLDER // FEMALE



EXPOSED  
TULIP  
CONTACT



P.C.B. LAYOUT

NOTE:

MATERIAL

INSULATOR  
CONTACT

LCP UL94V-0, BLACK  
BRASS  
15u" GOLD PLATING MATING AREA  
60u" TIN SOLDER AREA  
FRONT SHELL  
STEEL, NICKEL 60u"-100u"  
BACK SHELL  
BRASS, NICKEL 60u"-100u"  
BOARD LOCK  
BRASS, NICKEL 60u"-100u"

ELECTRICAL

RATED CURRENT 2A  
VOLTAGE 60VDC  
INSULATOR RESISTANCE 1000 MOhms MIN.  
CONTACT RESISTANCE 30 mOhms MAX.

ENVIRONMENT

OPERATION TEMPERATURE -40°C TO +125°C  
PROCESS TEMPERATURE 260°C

\*NOT DESIGNED TO MATE WITH NORCOMP 380 // 381 // 960 SERIES & NORCOMP MICRO-D CABLE ASSEMBLIES USING THE 960 SERIES CONNECTORS.

\*\*DESIGNED TO MATE WITHIN NORCOMP 58Y-M SERIES MICRO-D CONNECTORS

DIMENSIONS(mm)					
SIZE	A	B	C	D	E
9	19.93	14.35	5.08	14.35	8.80
15	23.75	18.20	8.89	18.16	12.60
25	30.10	24.55	15.24	24.51	18.95

581-MYY-213L461

SERIES \_\_\_\_\_  
581 = MACHINED MICRO-D

MACHINED \_\_\_\_\_

POSITIONS \_\_\_\_\_  
09  
15  
25

GENDER \_\_\_\_\_  
1 = FEMALE - "TULIP" CONTACTS  
RIGHT ANGLE SOLDER TERMINATION \_\_\_\_\_  
CONTACT PLATING OPTIONS \_\_\_\_\_  
1 = 15u" GOLD PLATING  
2 = 30u" GOLD PLATING

RoHS COMPLIANT



THESE DRAWINGS AND SPECIFICATIONS ARE THE PROPERTY OF NorComp AND SHALL NOT BE REPRODUCED, COPIED OR USED AS THE BASIS FOR THE MANUFACTURE OR SALE OF APPARATUS WITHOUT WRITTEN PERMISSION.

DRAWN:

J. KADEL

DATE:

05/14/2020

TOLERANCES

.x ±0.20  
.xx ±0.15  
.xxx ±0.10  
.xxxx ±0.05  
ANGULAR ±1°

UNITS = mm

DO NOT SCALE FROM DRAWING

NorComp

SCALE:

NTS

SHEET

OF

REV

DWG NO.

581-MYY-213L461