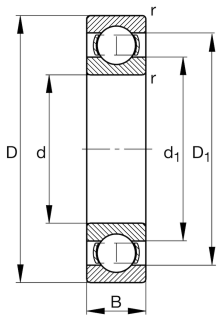


**FAG****16008-A-C3**

Deep groove ball bearing

Deep groove ball bearing 160..-A, single row,
steel sheet metal cage

Technical information



Your current product variant

Changed internal design	A	Design variant A
Sealing	Without	Not sealed
Cage	JN	Steel sheet metal
Tolerance class	PN	Normal (PN)
Dimensional / heat stabilization	SN	Rings dimensional stabilized up to 120°
Lubricant	Without	Bearing not greased
Radial internal clearance	C3 (Group 3)	Internal clearance larger than CN
Bore type	Z	Cylindrical

Main Dimensions & Performance Data

d	40 mm	Bore diameter
D	68 mm	Outside diameter
B	9 mm	Width
C _r	12,620 N	Basic dynamic load rating, radial
C _{0r}	9,650 N	Basic static load rating, radial
C _{ur}	570 N	Fatigue load limit, radial
n _G	15,200 1/min	Limiting speed
n _{gr}	7,800 1/min	Reference speed
m	0.127 kg	Weight



Mounting dimensions

d _{a min}	42 mm	Minimum diameter shaft shoulder
D _{a max}	66 mm	Maximum diameter of housing shoulder
r _{a max}	0.3 mm	Maximum fillet radius

Dimensions

r _{min}	0.3 mm	Minimum chamfer dimension
D ₁	58.4 mm	Shoulder diameter outer ring
d ₁	49.7 mm	Shoulder diameter inner ring

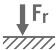





Temperature range

T _{min}	-30 °C	Operating temperature min.
T _{max}	120 °C	Operating temperature max.

Calculation factors

f ₀	16	Calculation factor
----------------	----	--------------------

Characteristics

	Radial load
	Axial load in one direction
	Axial load in two directions
	Grease Lubrication
	Oil Lubrication
	Not sealed