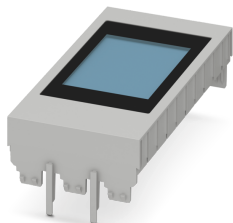


Upper housing part with touch display - ME-IO 56,4 C 10U D2,4-TRG 7035-VPE1 - 1225275

Please be informed that the data shown in this PDF Document is generated from our Online Catalog. Please find the complete data in the user's documentation. Our General Terms of Use for Downloads are valid (<http://phoenixcontact.com/download>)




DIN rail housing, 10U upper part, integrated 2.4" resistive touch display, interface: 4-wire SPI half duplex, Housing cover, width: 56.88 mm, height: 109.8 mm, depth: 26 mm, color: light gray (7035)

Your advantages

- ✓ Housing system for visualization and operation in the control cabinet
- ✓ Coordinated housings with pre-installed touch displays
- ✓ Time-saving assembly of ready-to-use modules
- ✓ Can be machined for application-specific connection technology



Key Commercial Data

Packing unit	1 pc
GTIN	 4 063151 316686
GTIN	4063151316686
Weight per Piece (excluding packing)	43.980 g
Custom tariff number	85480090
Sales Key	ACGBBA

Technical data

Item properties

Brief article description	Upper housing part with touch display
Type	ME-IO 56,4 C 10U D2,4-TRG 7035-VPE1
Item no.	1225275
Housing type	DIN rail housing
Type	10U upper part, integrated 2.4" resistive touch display
Max. IP code to attain	IP20
Mounting type	Snap in
Ventilation openings present	no

Upper housing part with touch display - ME-IO 56,4 C 10U D2,4-TRG 7035-VPE1 - 1225275

Technical data

Dimensions

Width [w]	56.88 mm
Height [h]	109.8 mm
Depth [d]	26 mm

Material data

Housing material	Polyamide
Color (RAL)	light gray (7035)
Flammability rating according to UL 94	V0

Ambient conditions

Ambient temperature (storage/transport)	-20 °C ... 55 °C
Ambient temperature (assembly)	-5 °C ... 70 °C
Ambient temperature (operation)	-20 °C ... 70 °C (depending on power dissipation)
Relative humidity (storage/transport)	80 %

PCB data

Mounting position	Vertical (horizontal DIN rail)
-------------------	--------------------------------

Vibration test

Specification	IEC 60068-2-6:2007-12
Frequency	10 - 150 - 10 Hz
Sweep speed	1 octave/min
Amplitude	0.15 mm (10 - 58.1 Hz)
Acceleration	20 m/s ²
Test duration per axis	2.5 h
Test directions	X-, Y- and Z-axis

Shock

Specification	IEC 60068-2-27:2008-02
Acceleration	150 m/s ²
Shock duration	11 ms
Number of shocks per direction	3
Test directions	X-, Y- and Z-axis (pos. and neg.)

Testing for paint wetting impairment substances (LABS-conformity)

Specification	VDMA 24364:2018-05
Testing	Labeling of LABS-conformity

General information

Type of note	Assembly instruction:
Note	Refer to the data sheet for the range in the download area.

Packaging information

Upper housing part with touch display - ME-IO 56,4 C 10U D2,4-TRG 7035-VPE1 - 1225275

Technical data

Packaging information

Type of packaging	packed in cardboard
Pieces per package	1
Denomination packing units	Pcs.
Outer packaging type	Carton

Standards and regulations

Flammability rating according to UL 94	V0
--	----

Articles in set

Display - DCT T 2,4 QVGA S RTOUCH - 1132710

Resistive touch display, 2.4", resolution: 320 x 240 pixels, interface: SPI, contrast ratio: 500:1, aspect ratio: 3:4, interface: "4-wire SPI half duplex, Glue and Play solution", suitable for polyamide and polycarbonate



Classifications

eCl@ss

eCl@ss 11.0	27182702
eCl@ss 9.0	27182702

ETIM

ETIM 7.0	EC001031
----------	----------