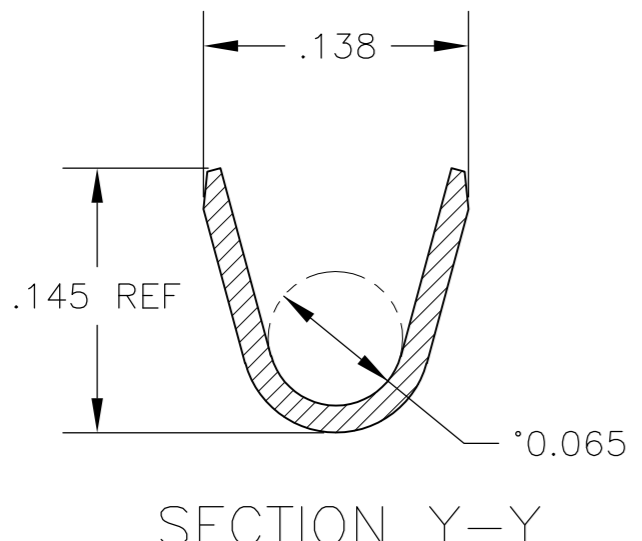
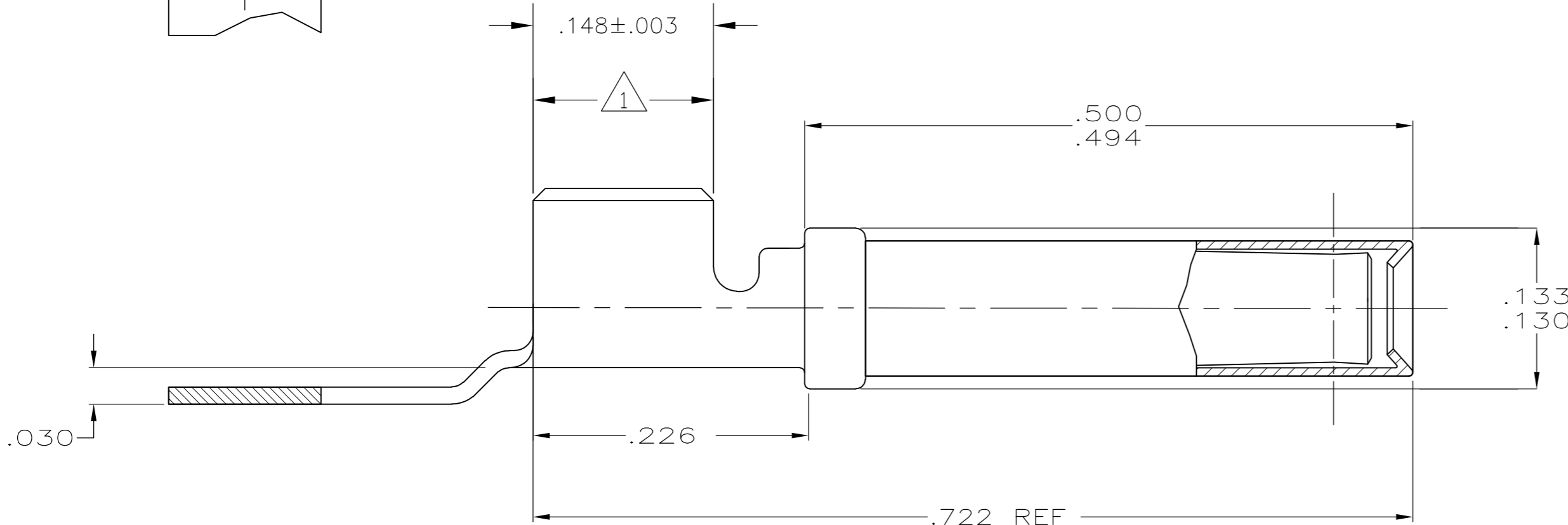
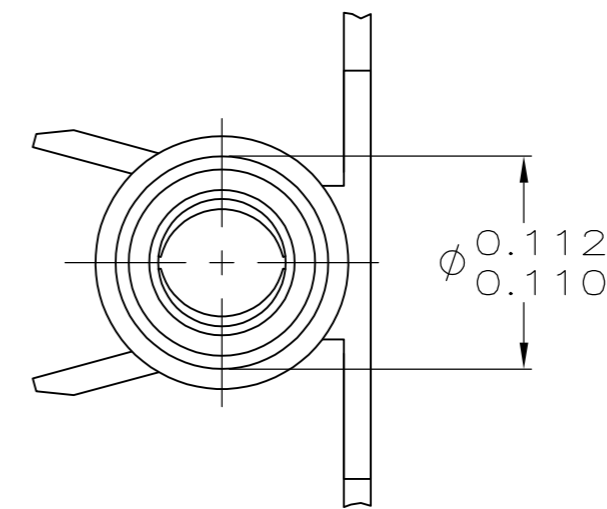
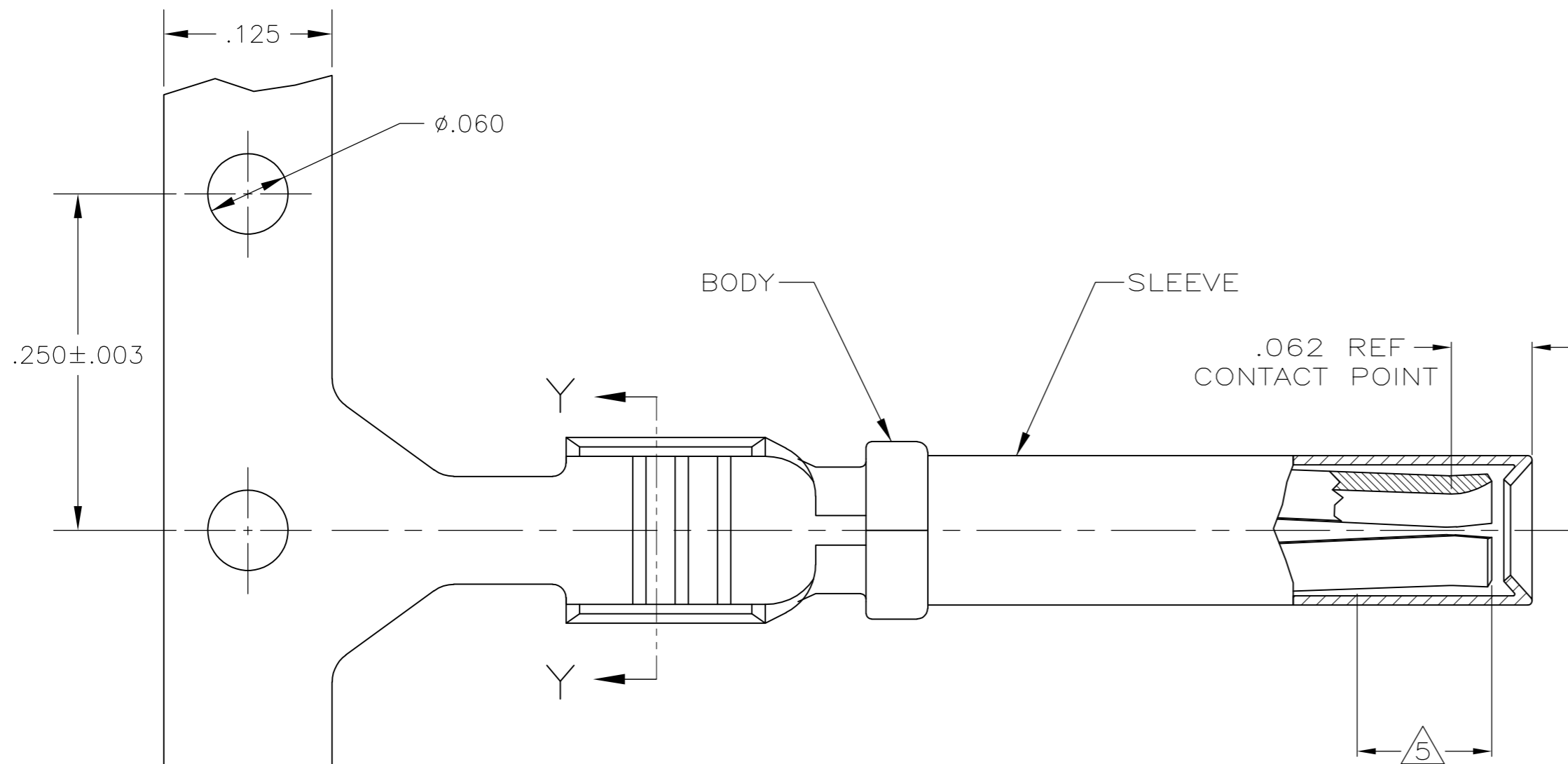


THIS DRAWING IS UNPUBLISHED. RELEASED FOR PUBLICATION
 © COPYRIGHT - By - ALL RIGHTS RESERVED.

| LOC | DIST | REVISIONS | | | | | |
|-----|------|-----------|-----|---------------------------|---------|-----|------|
| GE | 00 | P | LTR | DESCRIPTION | DATE | DWN | APVD |
| | | B1 | | REVISED PER ECO-11-005030 | 11MAR11 | RK | HMR |



- ① FINISH: PLATE 0.000100-0.000200 THK TIN IN LOCALIZED TIN PLATE AREA, ALL OVER 0.000030-0.000070 THK NICKEL.
SLEEVE: PASSIVATE PER SPEC. 112-230-2, METHOD I.
- 2. CONTACT WILL BE LUBED WITH LUBRICANT PER P/N 22014-4.
- 3. WIRE RANGE: 18-14 AWG SXL, GXL, AND TXL WIRE WITH INSL DIAMETERS OF 0.077-0.155 INCHES.
- 4. SLEEVE MUST WITHSTAND PULL-OFF FORCE IN DIRECTION PARALLEL TO CENTER OF TERMINAL OF 10 LBS. MINIMUM.
- ⑤ PLATE 0.000030 MIN THK SELECT GOLD IN LOCALIZED PLATE AREA.
- ⑥ FINISH: PLATE 0.000100-0.000200 THK TIN IN LOCALIZED TIN PLATE AREA, ALL OVER 0.000040-0.000080 THK NICKEL.
- ⑦ BODY MATERIAL: 0.014 THK COPPER ALLOY
SLEEVE MATERIAL: 0.007 THK STAINLESS STEEL

| | |
|--------|-------------|
| ⑥ | 776491-2 |
| ① ⑤ | 776491-1 |
| FINISH | PART NUMBER |

| | | | | | | | | |
|--|---|--------------|------------|-----------|--------|------------------------------------|-----------|------------|
| THIS DRAWING IS A CONTROLLED DOCUMENT. | | DWN | JR BUSSARD | 13DEC2002 | | TE Connectivity | | |
| DIMENSIONS: INCHES | | CHK | MP TRULL | 13DEC2002 | | ASSEMBLY, SOCKET CONTACT, TXL WIRE | | |
| TOLERANCES UNLESS OTHERWISE SPECIFIED: | | APVD | MP TRULL | 13DEC2002 | | SIZE | CAGE CODE | DRAWING NO |
| 0 PLC ± - 1 PLC ± - 2 PLC ± .02 3 PLC ± .005 4 PLC ± - ANGLES ± - FINISH | | PRODUCT SPEC | | | | RESTRICTED TO | | |
| MATERIAL | ⑦ | WEIGHT | - | | A2 | 00779 | C=776491 | |
| CUSTOMER DRAWING | | SCALE | 10:1 | SHEET | 1 of 1 | REV | B1 | |

776491