

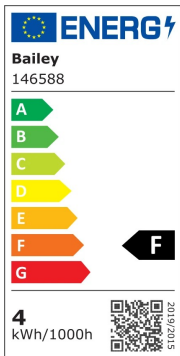


## LED G9 WarmDim 4W (33W) 360lm 830-822

Article number: 146588

BAI LED G9 WarmDim 230V 4W 3000K-2200K 360lm Clear 360° 18x49mm D2W DTW Dim To Warm Dimtone Glowdim Capsule LED lamp

With this WarmDim LED lamp you can go from cozy warm light (2200K) to functional warm white light (3000K) and back again in literally an instant.



### General ETIM properties

ETIM group	Lamps
ETIM class	LED-lamp/Multi-LED
Name	LED G9 WarmDim 4W (33W) 360lm 830-822
Brand	Bailey
Productseries	LED Capsule
Producttype	G9 WarmDim

## ETIM specifications

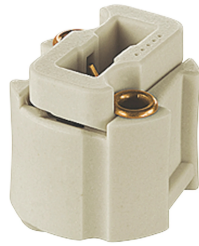
Socket	G9
Luminous flux [lm]	360 - 360
Nominal voltage [V]	220 - 240
Lamp power [W]	4 - 4
Colour temperature [K]	2000 - 3000
Diameter [mm]	19
Length [mm]	49
Dimmable	Yes
Lamp shape	Capsule/stick
Beam angle [°]	360 - 360
Colour	Other
Type of glass/cover	Clear
Lamp designation	Other
Colour rendering index CRI	80-89
Voltage type	AC
Filament lamp	No
Rated luminous flux according to IEC 62612 [lm]	360
Power factor	0.8
Lamp efficacy [lm/W]	90
Nominal current [mA]	18 - 18
Colour of light according to EN 12464-1	Warm white < 3300 K
Housing colour	White
Average nominal lifetime [h]	15000
Degree of protection (IP)	IP20
Colour consistency (McAdam ellipse)	SDCM6
Min. number of switching cycles	12500
Weighted energy consumption in 1000 hours [kWh]	4
Remote operation possible	No
With movement sensor	No
With remote control	No
Compatible with Apple HomeKit	No
Compatible with Google Assistant	No
Compatible with Amazon Alexa	No
IFTTT support available	No
Suitable for electronic ballast	No
Suitable for magnetic ballast	No
Dimming phase cut-off (trailing edge)	Yes
Dimming phase cut-on (leading edge)	Yes
Dimming Touch and Dim	No
Dimming Zigbee	No
Dimming Bluetooth	No

Dimming Wi-Fi	No
Energy efficiency class according to EU regulation 2019/2015	F
With twilight switch	No
Material of light bulb	Plastic

### Complementary articles



**142678**  
Bailey WW15031 LED Wall Dimmer RC 3-150W



**140268**  
BJB 25.830.1000.00 G9 Lampholder Ceramic