

# A 1-12 - Ferrule



2100094

<https://www.phoenixcontact.com/gb/products/2100094>

Please be informed that the data shown in this PDF document is generated from our online catalog. Please find the complete data in the user documentation. Our general terms of use for downloads are valid.



Ferrule, Length contact range: 12 mm, sleeve length: 12 mm, color: silver

## Commercial data

Item number	2100094
Packing unit	1,000 pc
Minimum order quantity	1,000 pc
Sales key	BH3412
Product key	BH3412
GTIN	4067923213937
Weight per piece (including packing)	0.087 g
Weight per piece (excluding packing)	0.087 g
Customs tariff number	85369010
Country of origin	DE

# A 1-12 - Ferrule

2100094

<https://www.phoenixcontact.com/gb/products/2100094>



## Technical data

### Product properties

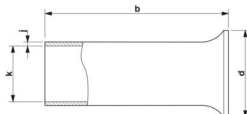
Product type	Cable end sleeve
Conductor category	stranded conductors, class 2, 5, 6 / B, C, K, M
Product property	Made from soft tin-plated electrolytic copper
	Correspond to the requirements of DIN 46228-1 and UL 486F in terms of size
	Long/short-term temperature: +105°C/+120°C

### Connection data

#### Conductor connection

Conductor cross section flexible max.	1 mm <sup>2</sup>
Conductor cross section AWG max.	18
Stripping length	12 mm

### Dimensions

Dimensional drawing	
Sleeve length	12 mm
Length contact range	12 mm
Maximum stripping length	12 mm
Ferrule diameter	1.4 mm
Sleeve wall thickness	0.15 mm
Inner dimensions of the insulating collar	2.5 mm

### Material specifications

Color	silver-colored
Material	CU-DHP
Coating	galvanically tin-plated
Surface characteristics	Tin-plated

### Mechanical properties

#### Technical data

Sleeve length	12 mm
---------------	-------

# A 1-12 - Ferrule

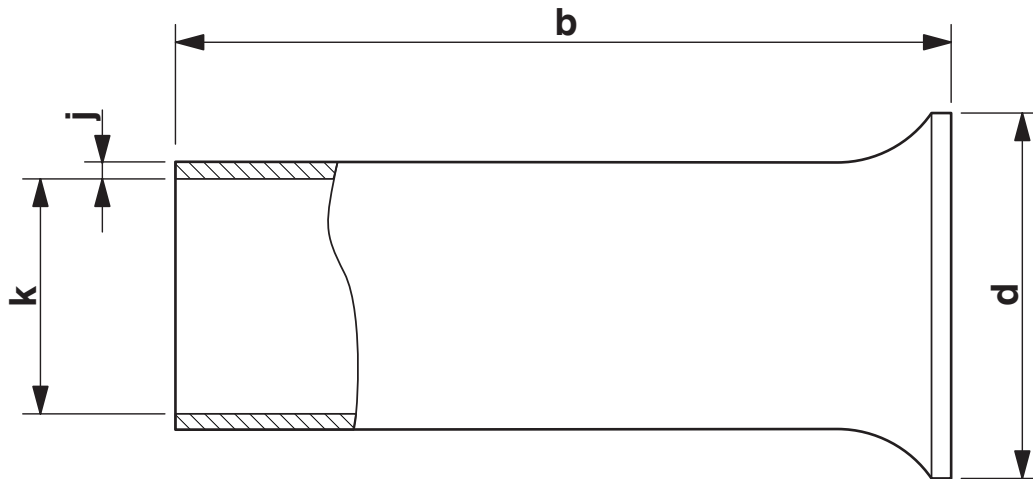
2100094

<https://www.phoenixcontact.com/gb/products/2100094>



## Drawings

Dimensional drawing



Sleeve length (b), insulating collar inner dimension (d), sleeve diameter (k), sleeve wall thickness (j)

# A 1-12 - Ferrule



2100094

<https://www.phoenixcontact.com/gb/products/2100094>

## Classifications

### ECLASS

ECLASS-13.0	27400201
-------------	----------

### ETIM

ETIM 9.0	EC000005
----------	----------

# A 1-12 - Ferrule



2100094  
<https://www.phoenixcontact.com/gb/products/2100094>

## Environmental product compliance

EU RoHS	
Fulfills EU RoHS substance requirements	Yes, No exemptions
China RoHS	
Environment friendly use period (EFUP)	EFUP-E
	No hazardous substances above the limits
EU REACH SVHC	
REACH candidate substance (CAS No.)	No substance above 0.1 wt%

Phoenix Contact 2025 © - all rights reserved  
<https://www.phoenixcontact.com>

PHOENIX CONTACT Ltd  
Halesfield 13, Telford  
Shropshire, TF7 4PG  
01952 681700  
[info@phoenixcontact.co.uk](mailto:info@phoenixcontact.co.uk)