



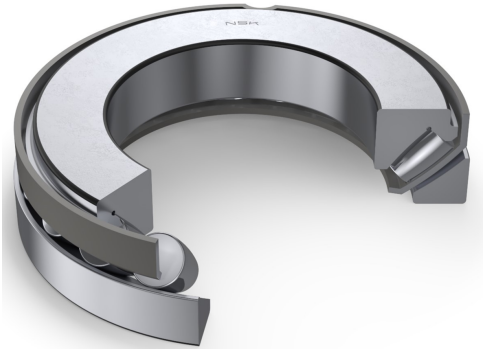
PRODUCT DATASHEET

Datasheet creation date: 2025/05/28 8:02 (UTC)



29412E

Thrust Spherical Roller Bearings



Boundary Dimensions

d	60	mm	Bore diameter
D	130	mm	Outside diameter
T,T3	42	mm	Height
r (min.)	1.5	mm	Chamfer dimension

Basic Load Ratings

Ca	330000	N	Basic dynamic load rating
C0a	885000	N	Basic static load rating

Speeds

Oil (Oil-bath)	2600	min-1	Oil-bath lubrication
----------------	------	-------	----------------------

Dimensions

B2	38	mm	Height shaft washer + cage
d1	114.5	mm	Outside diameter of shaft washer end side face
B1	27	mm	Width shaft washer or length of shaft washer bore diameter that fits on shaft
C	20	mm	Height housing washer
A	38	mm	Distance from shaft washer end side face to pressure point
D1	89	mm	Shoulder diameter outer ring
ds1 (max.)	67	mm	Abutment diameter spacer ring
ds2 (max.)	67	mm	Abutment diameter spacer ring (E design)

Abutment and Fillet Dimensions

Da (max.)	108	mm	Diameter of housing abutment
Db (max.)	133	mm	Abutment diameter housing (E design)
ra (max.)	1.5	mm	Radius of shaft or housing fillet
da (min.)	90	mm	Abutment diameter spacer ring (E design)

Mass

Mass approx.	2.55	kg	Mass approx.
--------------	------	----	--------------

