



*Quality Products. Service Excellence.*

## Watertight Extruded Aluminum Enclosures *1457 Series*

IP65, Heavy Duty, Wall-mounting Option

### NEW SIZES



### Key Features:

- Watertight - heavy duty extruded enclosures designed to house P.C. boards or for equipment interfacing.
- Sized for standard Eurocards.
- P.C. boards mount horizontally by sliding into internal slots extruded into the enclosure body.
- Rugged body constructed from one piece, extruded aluminum with a minimum thickness of .06" (1.5 mm).
- Extruded aluminum body includes a recessed area for labels or membrane keypad.
- End panels are rugged - yet easy to machine - diecast aluminum with full perimeter self-adhesive gaskets.
- Designed to meet IP65.
- Choice of two versions - end panels without flange or with flange (for shelf or wall mounting).

### Includes:

- Two diecast aluminum end panels - painted in a durable, black satin powder paint.
- Extruded, aluminum body (choice of either clear anodized or black powder paint finish).
- Two closed cell polyethylene foam - end plate gaskets & rubber "O" rings for assembly screws.
- All hardware and self-adhesive feet included.
- Replacement assembly screws can be purchased in 100-packs under part number **1457MS100**
- NOTE: Recommended screw torque is 5 lbf/in



Available with black powder coat or clear anodize finish and with or without wall-



Enclosure includes extruded body, die-cast end panels, gaskets, and hardware. Extra end panel kits are sold

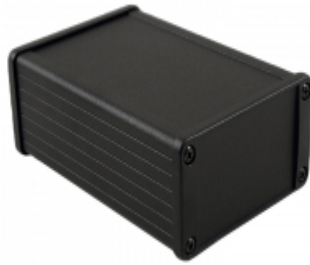


Built to be water-proof and

mounting flanges.

separately.

very rugged.



### Enclosures

Water-Tight, No Flanges	Water-Tight w/ Flanges	Extrusion Color	Extrusion Length	Width	Height
1457C801	1457C802	Clear Anodize	3.15	2.32	1.21
1457C801BK	1457C802BK	Black Powder Coat	3.15	2.32	1.21
1457C1201	1457C1202	Clear Anodize	4.73	2.32	1.21
1457C1201BK	1457C1202BK	Black Powder Coat	4.73	2.32	1.21
1457J1201	1457J1202	Clear Anodize	4.73	3.30	1.12
1457J1201BK	1457J1202BK	Black Powder Coat	4.73	3.30	1.12
1457K1201	1457K1202	Clear Anodize	4.73	3.30	1.73
1457K1201BK	1457K1202BK	Black Powder Coat	4.73	3.30	1.73
1457L1201	1457L1202	Clear Anodize	4.73	4.09	1.26
1457L1201BK	1457L1202BK	Black Powder Coat	4.73	4.09	1.26
1457N1201	1457N1202	Clear Anodize	4.73	4.09	2.15
1457N1201BK	1457N1202BK	Black Powder Coat	4.73	4.09	2.15
1457J1601	1457J1602	Clear Anodize	6.30	3.30	1.12
1457J1601BK	1457J1602BK	Black Powder Coat	6.30	3.30	1.12
1457K1601	1457K1602	Clear Anodize	6.30	3.30	1.73
1457K1601BK	1457K1602BK	Black Powder Coat	6.30	3.30	1.73
1457L1601	1457L1602	Clear Anodize	6.30	4.09	1.26
1457L1601BK	1457L1602BK	Black Powder Coat	6.30	4.09	1.26
1457N1601	1457N1602	Clear Anodize	6.30	4.09	2.15
1457N1601BK	1457N1602BK	Black Powder Coat	6.30	4.09	2.15
1457T1601	1457T1602	Clear Anodize	6.30	6.51	2.15
1457T1601BK	1457T1602BK	Black Powder Coat	6.30	6.51	2.15
1457U1601	1457U1602	Clear Anodize	6.30	7.52	2.68
1457U1601BK	1457U1602BK	Black Powder Coat	6.30	7.52	2.68
1457T2201	1457T2202	Clear Anodize	8.66	6.51	2.15
1457T2201BK	1457T2202BK	Black Powder Coat	8.66	6.51	2.15
1457U2201	1457U2202	Clear Anodize	8.66	7.52	2.68
1457U2201BK	1457U2202BK	Black Powder Coat	8.66	7.52	2.68
1457U2801	1457U2802	Clear Anodize	11.02	7.52	2.68
1457U2801BK	1457U2802BK	Black Powder Coat	11.02	7.52	2.68

### Replacement End Panels

Enclosure Part Number	End Panel Kit (No Mounting Flanges)		End Panel Kit w/ Integrated Mounting Flanges	
	Beginning With	2-pack	10-pack	2-pack
1457C	1457CWP	1457CWP-10	1457CWPF	1457CWPF-10
1457J	1457JWP	1457JWP-10	1457JWPF	1457JWPF-10
1457K	1457KWP	1457KWP-10	1457KWPF	1457KWPF-10
1457L	1457LWP	1457LWP-10	1457LWPF	1457LWPF-10
1457N	1457NWP	1457NWP-10	1457NWPF	1457NWPF-10
1457T	1457TWP	1457TWP-10	1457TWPF	1457TWPF-10

Enclosure Part Number	End Panel Kit (No Mounting Flanges)		End Panel Kit w/ Integrated Mounting Flanges	
	2-pack	10-pack	2-pack	10-pack
1457U	1457UWP	1457UWP-10	1457UWPF	1457UWPF-10

### Replacement Gaskets

Enclosure Part Number	Water-Tight Gaskets	EMI Gaskets
Beginning With	10-pack	10-pack
1457C	1457CPG-10	1457CEG-10
1457J	1457JPG-10	1457JEG-10
1457K	1457KPG-10	1457KEG-10
1457L	1457LPG-10	1457LEG-10
1457N	1457NPG-10	1457NEG-10
1457T	1457TPG-10	1457TEG-10
1457U	1457UPG-10	1457UEG-10

Tags: extruded, anodized, board mount, PCB slot, watertight

*Data subject to change without notice*

© 2023. Hammond Manufacturing Ltd. All rights reserved.