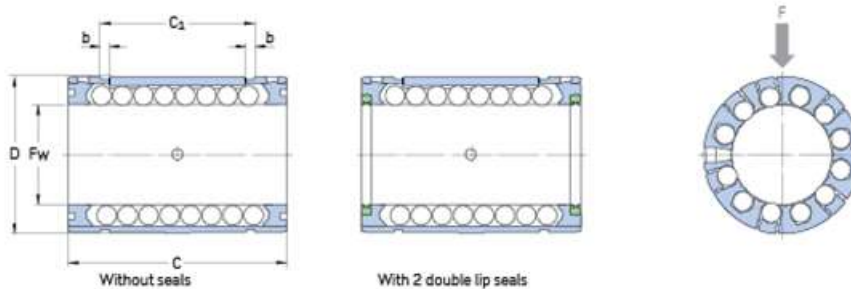
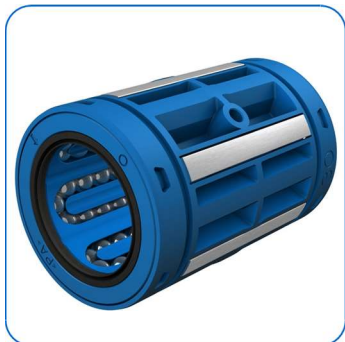


Produktdatenblatt

LBCR 25 D-2LS

Geschlossenes Linearkugellager, beidseitig abgedichtet



Ersatz für LBCR 25 A-2LS

Fw:	25
D[mm]:	40
C[mm]:	58
C1[mm]:	43.7
b[mm]:	1.85
Kugelreihen [#]:	6
Cmin[N]:	3100
Cmax[N]:	4550
C0min[N]:	2360
C0max[N]:	3800
vmax[m/s]:	5

Datum: 19/05/2020

The contents of this report are the copyright of the publisher and may not be reproduced (even extracts) unless permission is granted. Every care has been taken to ensure the accuracy of the information contained in this report but no liability can be accepted for any loss or damage whether direct, indirect or consequential arising out of the use of the information contained herein.

Produktdatenblatt

LBCR 25 D-2LS

Geschlossenes Linearkugellager, beidseitig abgedichtet

amax[m/s ²]:	100
Gewicht [kg]:	0.108

Datum: 19/05/2020

The contents of this report are the copyright of the publisher and may not be reproduced (even extracts) unless permission is granted. Every care has been taken to ensure the accuracy of the information contained in this report but no liability can be accepted for any loss or damage whether direct, indirect or consequential arising out of the use of the information contained herein.