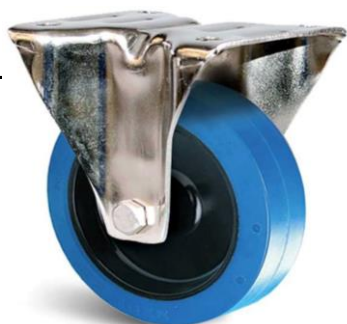


Description

STAINLESS STEEL TOP PLATE CASTOR, BLUE ELASTIC RUBBER 160MM

Fixed

KF5BA160-571RX



Part Number

Swivel

KP5BA160-571RX

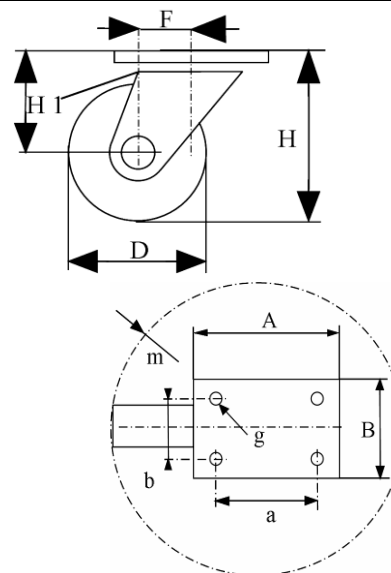


Swivel and brake

KP5BD160-571RX



	Fixed	Swivel	Swivel+brake
Wheel Diameter ØD	160 mm		
Overall Height H	197 mm ±1		
Size of plate A X B	129 x 106 mm±1		
Plate hole centres a x b	105 x 80 mm±0,3		
Plate hole	11 mm		
Offset F ±1	\	52 mm	52 mm
Width of Tread	48 mm±0,5		
Hardness of tread	shore A ± 70°		
Load capacity	300 Kg		
Weight	1,5 kg	1,9 kg	2,2 kg
Temperature	- 20 / + 60 °C		



Castor Assembly :

Pressed stainless steel -AISI 304-. Swivel on two rows of balls.
Fastening by top plate.
Total lock. Metal pedal.

Wheel :

Wheel centre made of Black Polyamide.
Tread : Solid, Blue bonded elastic Rubber. Non marking.
Hub : Stainless steel roller bearing.

Features :

Low starting effort. High load capacity.
Smooth and quiet handling on all types of floors.
Absorbs shocks and vibrations. Resistant to wear.
100% anti-corrosion. Easy to clean. Specially designed for humid environments.
Suited for Food industry, Hospital or Industrial Kitchen equipment.
Non staining blue rubber.
Medium duty.