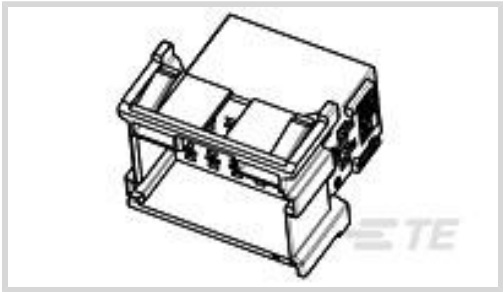




Connectors > Automotive Connectors > Automotive Housings > Timer Connector Housing



Number of Positions: 12

Connector & Housing Type: **Housing for Male Terminals**

Mating Tab Width: 2.8 mm [.11 in]

Connector System: **Wire-to-Wire**

Centerline (Pitch): 5 mm [.197 in]

[All Timer Connector Housing \(446\)](#)

Features

Product Type Features

Connector Shape	Rectangular
Mixed & Hybrid Connector	No
Connector & Housing Type	Housing for Male Terminals
Connector System	Wire-to-Wire
Sealable	No
Primary Locking Feature	Integrated in Housing
Connector & Contact Terminates To	Wire & Cable

Configuration Features

Number of Positions	12
Number of Rows	3

Electrical Characteristics

Operating Voltage	28 VDC
Nominal Voltage Architecture	28 V

Body Features

Cable Exit Angle	180°
Primary Product Color	Yellow
Connector & Keying Code	A



Contact Features

Contact Size	2.8mm
Contact Type	Tab
Mating Tab Width	2.8 mm[.11 in]

Mechanical Attachment

Strain Relief	Without
Terminal Position Assurance	No
Mating Alignment Type	Keyed
Mating Alignment	With
Connector Mounting Type	Cable Mount (Free-Hanging)

Housing Features

Housing Material	PA GF
Centerline (Pitch)	5 mm[.197 in]

Dimensions

Product Width	35.45 mm[1.396 in]
Product Length	27.5 mm[1.083 in]
Connector Height	30.6 mm[1.205 in]

Usage Conditions

Operating Temperature (Max)	120 °C[248 °F]
Operating Temperature Range	-40 – 120 °C[-40 – 248 °F]

Operation/Application

Circuit Application	Power
---------------------	-------

Packaging Features

Packaging Method	Bag
------------------	-----

Other

Serviceable	No
Connector Position Assurance Capable	No

Product Compliance

For compliance documentation, visit the product page on TE.com>

EU RoHS Directive 2011/65/EU	Compliant
------------------------------	-----------



EU ELV Directive 2000/53/EC	Compliant
China RoHS 2 Directive MIIT Order No 32, 2016	No Restricted Materials Above Threshold
EU REACH Regulation (EC) No. 1907/2006	Current ECHA Candidate List: JAN 2025 (247) Candidate List Declared Against: JAN 2024 (240) Does not contain REACH SVHC
Halogen Content	Low Halogen - Br, Cl, F, I < 900 ppm per homogenous material. Also BFR/CFR/PVC Free
Solder Process Capability	Not applicable for solder process capability

Product Compliance Disclaimer

This information is provided based on reasonable inquiry of our suppliers and represents our current actual knowledge based on the information they provided. This information is subject to change. The part numbers that TE has identified as EU RoHS compliant have a maximum concentration of 0.1% by weight in homogenous materials for lead, hexavalent chromium, mercury, PBB, PBDE, DBP, BBP, DEHP, DIBP, and 0.01% for cadmium, or qualify for an exemption to these limits as defined in the Annexes of Directive 2011/65/EU (RoHS2). Finished electrical and electronic equipment products will be CE marked as required by Directive 2011/65/EU. Components may not be CE marked. Additionally, the part numbers that TE has identified as EU ELV compliant have a maximum concentration of 0.1% by weight in homogenous materials for lead, hexavalent chromium, and mercury, and 0.01% for cadmium, or qualify for an exemption to these limits as defined in the Annexes of Directive 2000/53/EC (ELV). Regarding the REACH Regulation, the information TE provides on SVHC in articles for this part number is based on the latest European Chemicals Agency (ECHA) 'Guidance on requirements for substances in articles' posted at this URL: <https://echa.europa.eu/guidance-documents/guidance-on-reach>

Compatible Parts



TE Part # 967632-1
2. KONT-SICHERUNG 12P



TE Part # CAT-AM705-CH8173
AMP Unsealed Connector Housing

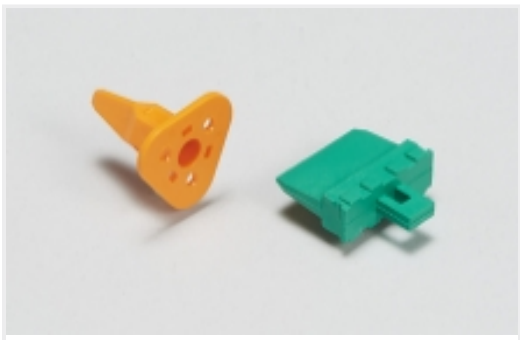


TE Part # CAT-T4827-T273
TIMER, RECEPTACLE AND TAB




TE Part # CAT-T4827-CH8172
Timer Connector Housing


Also in the Series | Timer Connector System




Automotive Connector Locks & Position Assurance(15)



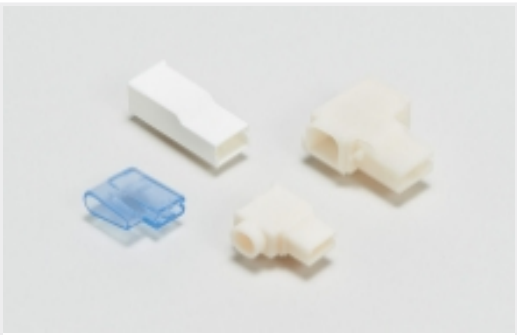
Automotive Headers(19)



Automotive Housings(195)



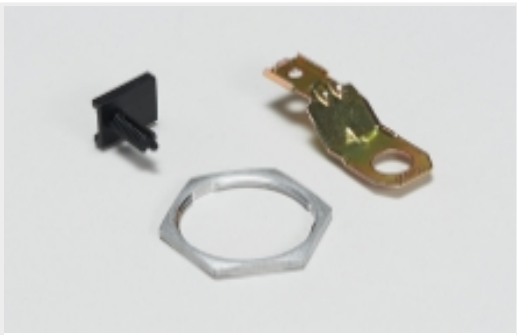
Connector Seals & Cavity Plugs(36)



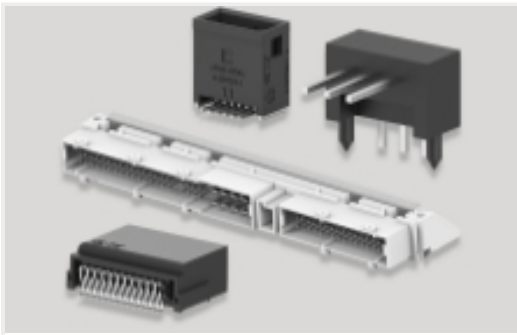
Crimp Terminal Housings(13)



Insertion & Extraction Tools(18)



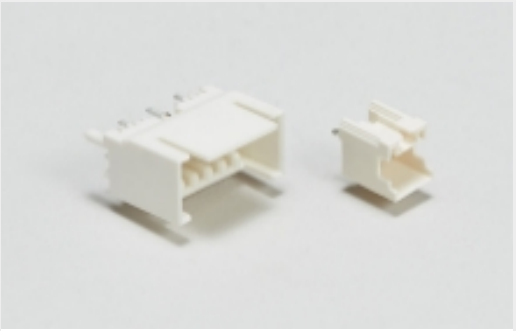
Other Automotive Connector Accessories(1)



PCB Headers & Receptacles(19)



Rectangular Power Connectors(2)



Wire-to-Board Headers & Receptacles (19)

Customers Also Bought



TE Part #CAT-T4827-CH8172
Timer Connector Housing



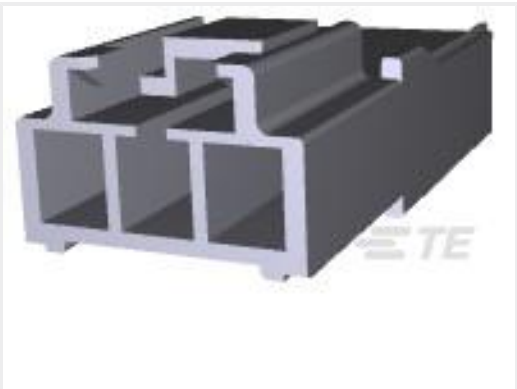
TE Part #640585-1
06P UMNL PLUG HSG V2 NATL



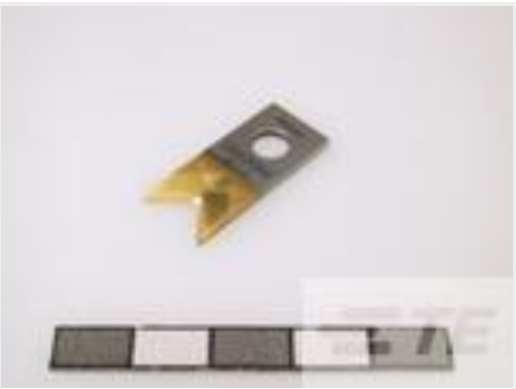
TE Part #2031676-1
SDE F MINI MIC 0.35-1.5mm2 ASSY



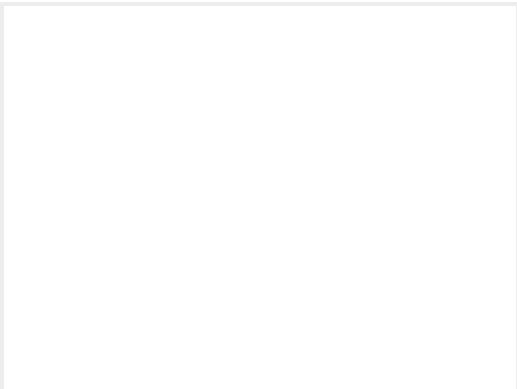
TE Part #2-1625886-6
1W SM M/OX 5% 56R



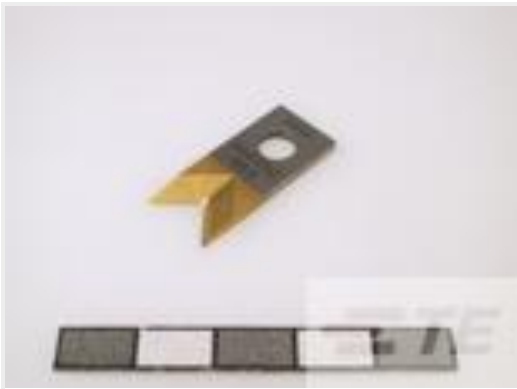
TE Part #176283-1
AMP UNIVERSA POWR CAP 3P



TE Part #1-511109-2
V-STRIPPING BLADES R1.0



TE Part #1-509871-2
TOOTHED BELT AT5B10L320



TE Part #1-511109-0
V-STRIPPING BLADES R0.5

Documents

Product Drawings
FLACHSTE-GEH2,8 12P

English

CAD Files

3D PDF

3D

Customer View Model

ENG_CVM_CVM_1-967627-2_D.2d_dxf.zip



English

Customer View Model

[ENG_CVM_CVM_1-967627-2_D.3d_igs.zip](#)

English

Customer View Model

[ENG_CVM_CVM_1-967627-2_D.3d_stp.zip](#)

English

By downloading the CAD file I accept and agree to the [Terms and Conditions](#) of use.

[Product Specifications](#)

[Application Specification](#)

English