

REVISIONS CA

DO NOT SCALE FROM THIS PRINT

UNLESS OTHERWISE NOTED
DIMENSIONS ARE IN INCHES TOLERANCES ARE:

ONE PLACE DECIMALS ±.1 [3] THREE PLACE DECIMALS ±.005 [.13] ANGLES ± 2°
TWO PLACE DECIMALS ±.01 [.3] FOUR PLACE DECIMALS ±.0020 [.051]

TITLE: .050 X .050
CUTTABLE SOCKET STRIP
DOUBLE ROW ASSEMBLY

DWG NO: SFMC-1XX-XX-XX-D-XX
SHEET 1 OF 2

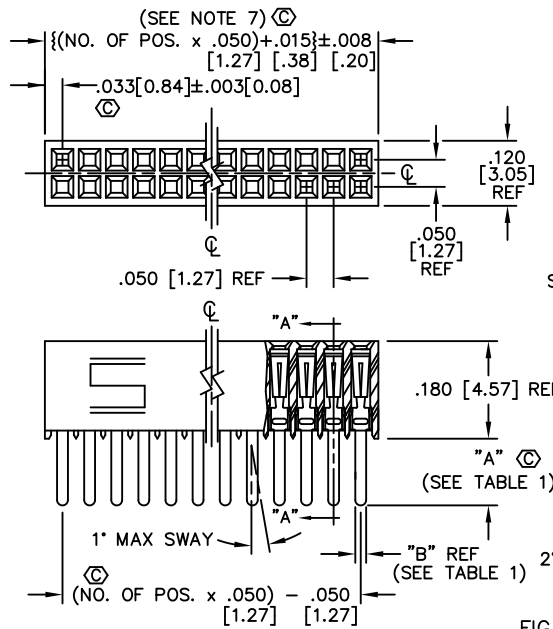


TABLE 1

SUFFIX	TAIL LENGTH "A"	TAIL WIDTH "B"
-X1	.120 [3.05]	.020 [.51]
-X3	.075 [1.91]	.016 [.41]

FIG 1
-X1: THROUGH HOLE
SECT. "A"-"A"

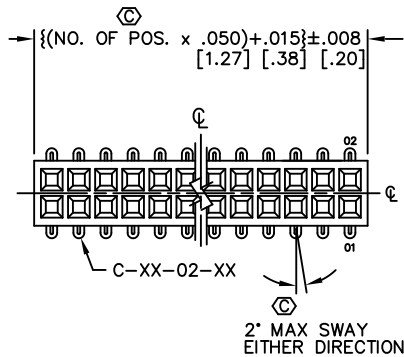


FIG 2
-X2: SURFACE MOUNT
DIFFERENT AS SHOWN,
OTHERWISE SAME AS FIG 1.

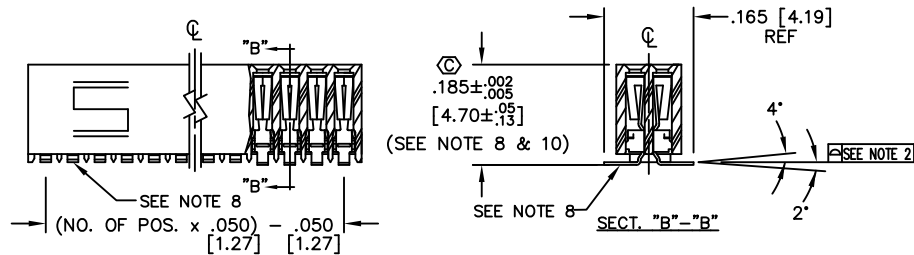


FIG 4
-K: POLYIMIDE FILM PAD
(4 POS MIN)
NOTE: "R" = USED MEASURED DIMENSION (REF)
"S" = {("R" - .1575 [4.00]) / 2 } ± .020 [.51]

SFMC-1XX-XX-XX-D-XX

NO. OF POSITIONS
ALL POSITIONS AVAILABLE
-02 THRU -50
USE BODY: (SFMC-50-D)

LEAD STYLE

OPTIONS
(LEAVE BLANK FOR STANDARD)
-P: PICK AND PLACE PAD (SEE FIGURE 3, SHT 2)
USE PFP-02 (5 POSITIONS MINIMUM)
-TR: TAPE & REEL (SEE FIG 4, SHT 2)
-K: POLYIMIDE FILM PAD (.005 [.13] THICKNESS)
(SEE FIG 4) (USE K-DOT-.157-.250-.005)
(4 POS MIN)

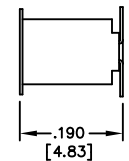
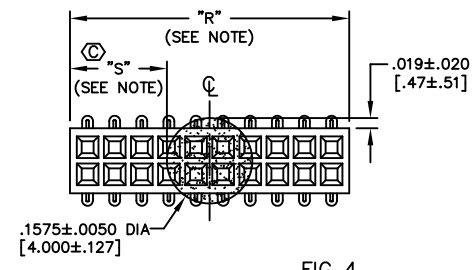
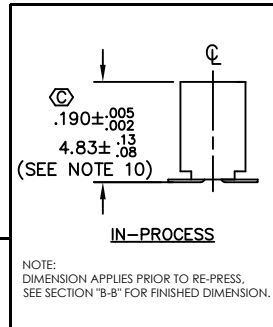
BODY SPECIFICATION
-D: DOUBLE ROW

PLATING SPECIFICATION
-S: 30μ SELECTIVE GOLD IN CONTACT AREA, MATTE TIN ON TAIL
-F: 3μ SELECTIVE GOLD IN CONTACT AREA, MATTE TIN ON TAIL
-H: 30μ GOLD IN CONTACT AREA, 3μ GOLD ON TAIL
(ONLY AVAILABLE ON -02, -L2, & -T2 LEAD STYLES)
-FM: 3μ SELECTIVE GOLD IN CONTACT AREA, MATTE TIN ON TAIL
-SM: 50μ SELECTIVE GOLD IN CONTACT AREA, MATTE TIN ON TAIL
-L: 10μ SELECTIVE GOLD IN CONTACT AREA, MATTE TIN ON TAIL

TABLE 2 (SEE NOTE 6)

LEAD STYLE & OPTION	PACKAGING TUBE	PLUG
-X1, -X3, -X3-K	PT-1-24-15-09	TP-12
-X2	PT-1-24-14-09	TP-24-02
-X2-K	PT-1-24-14-09	TP-24-02
-X2-P	PT-1-24-01-38	TP-24
-X1-K	PT-1-24-15-09	TP-12
-X1-P, -X3-P	PT-1-24-01-09	TP-24

- NOTES:
- MIN. PUSHOUT FORCE: .5 lb.
 - COPLANARITY: .004 [0.10] = POS 02 THRU 26
.006 [0.15] = POS 27 THRU 50
 - ⊕ REPRESENTS CRITICAL DIMENSION.
 - USE SFMC-50-D BODY.
 - NOTE DELETED.
 - PACKAGE ONLY POSITIONS -04 THRU -50 IN TUBES;
LAYER PACKAGE POSITIONS -02 THRU -03,
LEADS OR IN HOLES OF BODY.
 - CUT FLASH TO BE .010 MAX WITH NO FLASH EXTENDING BELOW
LEADS OR IN HOLES OF BODY.
 - MAXIMUM PIN HEIGHT VARIATION: .003[0.08] FROM PIN TO PIN AND
ROW TO ROW, MUST BE MEASURED BETWEEN ADJACENT PINS.
 - PINS CAN BE ORIENTED IN ANY DIRECTION; BOTH
ROWS MUST FACE SAME WAY.
 - DIMENSION TO BE MEASURED AT BEND.



PROPRIETARY NOTE
THIS DOCUMENT CONTAINS CONFIDENTIAL AND PROPRIETARY INFORMATION AND ALL DESIGN, MANUFACTURING, REPRODUCTION, USE, TEST DATA AND TRADE SECRETS ARE EXPRESSLY RESERVED BY SAMTEC, INC. THIS DOCUMENT SHALL NOT BE DISCLOSED IN WHOLE OR PART, TO ANY UNAUTHORIZED PERSONS OR BE INCORPORATED IN ANY OTHER PROJECT IN ANY MANNER WITHOUT THE EXPRESS WRITTEN CONSENT OF SAMTEC, INC.

MATERIAL:
BODY:
LCP, UL 94 VO
COLOR: BLACK

CONTACTS:
C-44 & C-61:
#25 BeCu, 1/2 HARD
AGE HARDENED
C-119
PHOS BRONZE 521

EXISPROD\ASSEMBLY\050
SFMC-ASM

samtec

PHONE (812) 944-6733 P.O. BOX 1147
CORTEC, INDIANAPOLIS, IN 46206
COURTESY OF SAMTEC, INC.

MADE BY:
BRATCHER 10-5-94

SFMC-1XX-XX-XX-D-XX
SHEET 1 OF 2