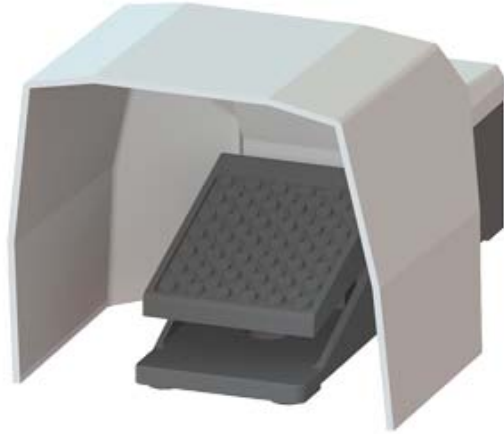


FOOT-OPERATED BUTTON, SINGEL PEDAL (WITHOUT LATCHING) CABLE ENTRY M20X1,5 IP 65, 2NO + 2NC WITH COVER



<b>Product designation</b>	momentary-contact foot switch
<b>General technical data:</b>	
<b>Protection class IP</b>	IP65
<b>Equipment marking</b>	
• acc. to DIN EN 61346-2	S
• acc. to DIN EN 81346-2	S
Number of switching steps	1
Number of the actuation pedals	1
<b>Operating current at AC-15</b>	
• at 230 V Rated value	6 A
• at 400 V Rated value	6 A
<b>Enclosure:</b>	
<b>Material of the enclosure</b>	metal
<b>Color</b>	
• of the enclosure	black
• of top part of the enclosure	grey
<b>Safety related data:</b>	
<b>B10 value with high demand rate acc. to SN 31920</b>	1 000 000
<b>Proportion of dangerous failures</b>	
• with low demand rate acc. to SN 31920	50 %
• with high demand rate acc. to SN 31920	50 %
Failure rate [FIT] with low demand rate acc. to SN 31920	100 FIT

T1 value for proof test interval or service life acc. to IEC 61508	20 y
--------------------------------------------------------------------	------

### Mechanical data:

Cable entry type	M20 x 1.5
------------------	-----------

### Ambient conditions:

Ambient temperature	-25 ... +80 °C
• during operation	

### Installation/ mounting/ dimensions:

Mounting type	screw fixing
Height	265 mm
Width	156 mm
Depth	138 mm

### Certificates/ approvals:

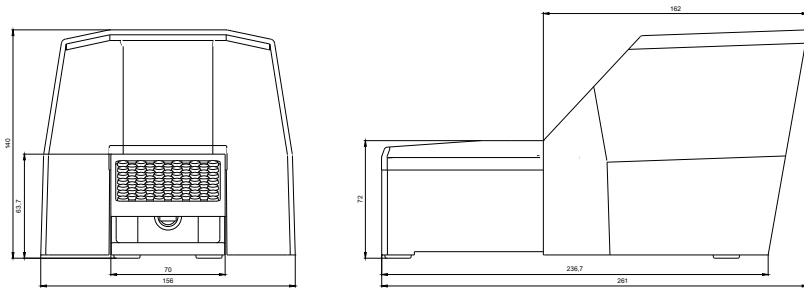
General Product Approval	Declaration of Conformity	Shipping Approval
 CSA		 EG-Konf.
		 ABS
		 LRS
		 PRS

Shipping Approval	other
-------------------	-------

 RINA	<a href="#">other</a>	<a href="#">Confirmation</a>
---------------------------------------------------------------------------------------------	-----------------------	------------------------------

### Further information

- Information- and Downloadcenter (Catalogs, Brochures,...)**  
<http://www.siemens.com/industrial-controls/catalogs>
- Industry Mall (Online ordering system)**  
<http://www.siemens.com/industrymall>
- Cax online generator**  
<http://support.automation.siemens.com/WW/CAXorder/default.aspx?lang=en&mlfb=3SE29031AA20>
- Service&Support (Manuals, Certificates, Characteristics, FAQs,...)**  
<https://support.industry.siemens.com/cs/ww/en/ps/3SE29031AA20>
- Image database (product images, 2D dimension drawings, 3D models, device circuit diagrams, EPLAN macros, ...)**  
[http://www.automation.siemens.com/bilddb/cax\\_de.aspx?mlfb=3SE29031AA20&lang=en](http://www.automation.siemens.com/bilddb/cax_de.aspx?mlfb=3SE29031AA20&lang=en)



last modified:

05.05.2015