

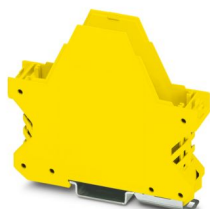
ME 22,5 F-UT/FE YE - Mounting base housing



2202656

<https://www.phoenixcontact.com/in/products/2202656>

Please be informed that the data shown in this PDF document is generated from our online catalog. Please find the complete data in the user documentation. Our general terms of use for downloads are valid.



DIN rail housing, Lower housing part with metal foot catch and FE contact, flat design, with vents, width: 22.6 mm, height: 99 mm, depth: 84.8 mm, color: yellow (similar RAL 1018), cross connection: without bus connector, number of positions cross connector: not relevant

Your advantages

- Tool-free mounting
- Available in overall widths from 12.5 mm ... 90 mm, modular extension is possible
- Flammability rating V0 in accordance with UL 94
- Variety of connection technology
- Can be mounted on the DIN rail
- With integrated or DIN-rail-mountable bus connector as an option

Commercial data

Item number	2202656
Packing unit	10 pc
Minimum order quantity	500 pc
Note	Made to order (non-returnable)
Sales key	*****
Product key	ACHAAA
GTIN	4055626345536
Weight per piece (including packing)	37.668 g
Weight per piece (excluding packing)	31.748 g
Customs tariff number	85389099
Country of origin	DE

ME 22,5 F-UT/FE YE - Mounting base housing

2202656

<https://www.phoenixcontact.com/in/products/2202656>

Technical data

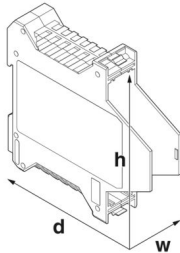
Notes

Assembly note	Please observe the application note in the download area.
---------------	---

Product properties

Product type	Enclosure bottom part
Housing type	DIN rail housing
Housing series	ME
Product family	ME 22,5..
Type	Lower housing parts with vents, housing cover necessary to complete the module
Max. number of positions	0)
Type	Lower housing part with metal foot catch and FE contact, flat design
Ventilation openings present	yes

Dimensions

Dimensional drawing	
Width	22.6 mm
Height	99 mm
Depth	84.8 mm
Depth from top edge of DIN rail	78.2 mm
Depth from top edge of DIN rail to support point on upper part	46 mm

PCB design

PCB thickness	1.4 mm ... 1.8 mm
---------------	-------------------

Material specifications

Color (Housing)	yellow (RAL 1018)
Flammability rating according to UL 94	V0
CTI according to IEC 60112	600
Housing material	PA
Surface characteristics	untreated

Environmental and real-life conditions

Power dissipation single housing for 20 °C

ME 22,5 F-UT/FE YE - Mounting base housing



2202656

<https://www.phoenixcontact.com/in/products/2202656>

Ambient temperature	20 °C
Reduction factor	1
Mounting position	vertical
Power dissipation	5.9 W

Power dissipation single housing for 30 °C

Ambient temperature	30 °C
Reduction factor	0.91
Mounting position	vertical
Power dissipation	5.4 W

Power dissipation single housing for 40 °C

Ambient temperature	40 °C
Reduction factor	0.81
Mounting position	vertical
Power dissipation	4.8 W

Power dissipation single housing for 50 °C

Ambient temperature	50 °C
Reduction factor	0.7
Mounting position	vertical
Power dissipation	4.1 W

Power dissipation single housing for 60 °C

Ambient temperature	60 °C
Reduction factor	0.57
Mounting position	vertical
Power dissipation	3.35 W

Power dissipation single housing for 70 °C

Ambient temperature	70 °C
Reduction factor	0.49
Mounting position	vertical
Power dissipation	2.9 W

Vibration test

Specification	IEC 60068-2-6:2007-12
Frequency	10 - 150 - 10 Hz
Sweep speed	1 octave/min
Amplitude	0.15 mm (10 Hz ... 58.1 Hz)
Acceleration	2g (58.1 Hz ... 150 Hz)
Test duration per axis	2.5 h
Test directions	X-, Y- and Z-axis

Glow-wire test

Specification	IEC 60695-2-11:2014-02
Temperature	850 °C

ME 22,5 F-UT/FE YE - Mounting base housing



2202656

<https://www.phoenixcontact.com/in/products/2202656>

Time of exposure	30 s
------------------	------

Thermal stability / ball thrust test

Specification	IEC 60695-10-2:2014-02
Temperature	125 °C
Test duration	1 h
Force	20 N

Mechanical strength / tumbling barrel

Specification	IEC 60998-1:2002-12
Height of fall	50 cm
Frequency	10

Shocks

Specification	IEC 60068-2-27:2008-02
Pulse shape	Half-sine
Acceleration	15g
Shock duration	11 ms
Number of shocks per direction	3
Test directions	X-, Y- and Z-axis (pos. and neg.)

Degree of protection (IP code)

Specification	IEC 60529:1989-11 + AMD 1:1999-11 + AMD 2:2013-08
---------------	---

Ambient conditions

Max. IP code to attain	IP20
Ambient temperature (operation)	-40 °C ... 105 °C (depending on power dissipation)
Ambient temperature (storage/transport)	-40 °C ... 55 °C
Ambient temperature (assembly)	-5 °C ... 100 °C
Relative humidity (storage/transport)	80 %

PCB data

Number of PCB holders	1
Type of PCB mount	Insertion (optional latching by PCB stop)
Thickness of the PCB	1.4 mm ... 1.8 mm

Mounting

Mounting type	DIN rail mounting
---------------	-------------------

Packaging specifications

Type of packaging	packed in cardboard
Outer packaging type	Carton

ME 22,5 F-UT/FE YE - Mounting base housing

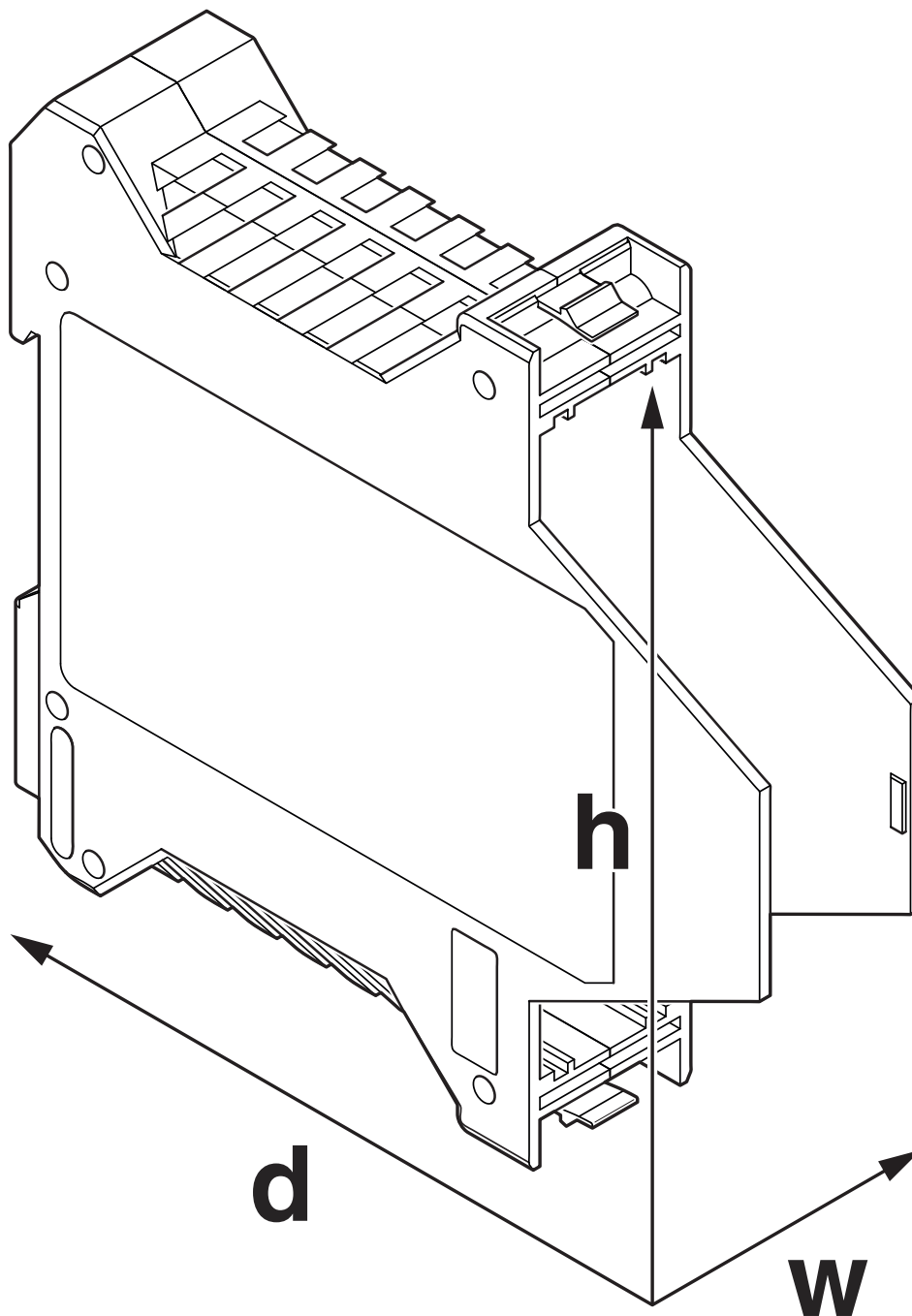
2202656

<https://www.phoenixcontact.com/in/products/2202656>



Drawings

Dimensional drawing



Schematic figure for illustrating the item dimensions. The figure is not of the desired product. For further details, refer to the product drawings in the "Downloads" tab.


ME 22,5 F-UT/FE YE - Mounting base housing



2202656

<https://www.phoenixcontact.com/in/products/2202656>

Approvals

 To download certificates, visit the product detail page: <https://www.phoenixcontact.com/in/products/2202656>



UL Recognized

Approval ID: E240868

ME 22,5 F-UT/FE YE - Mounting base housing



2202656

<https://www.phoenixcontact.com/in/products/2202656>

Classifications

ECLASS

ECLASS-11.0	27182702
ECLASS-13.0	27190601

ETIM

ETIM 9.0	EC002779
----------	----------

UNSPSC

UNSPSC 21.0	31261500
-------------	----------

ME 22,5 F-UT/FE YE - Mounting base housing



2202656

<https://www.phoenixcontact.com/in/products/2202656>

Environmental product compliance

EU RoHS	
Fulfills EU RoHS substance requirements	Yes, No exemptions
China RoHS	
Environment friendly use period (EFUP)	EFUP-E
	No hazardous substances above the limits
EU REACH SVHC	
REACH candidate substance (CAS No.)	No substance above 0.1 wt%

ME 22,5 F-UT/FE YE - Mounting base housing



2202656

<https://www.phoenixcontact.com/in/products/2202656>

Mandatory accessories

ME 22,5 OT-MKDSO YE - Upper housing part

2706331

<https://www.phoenixcontact.com/in/products/2706331>

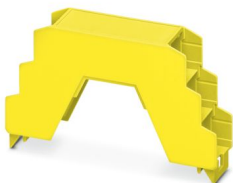


DIN rail housing, Upper housing part for PCB terminal blocks with screw connection, width: 22.6 mm, height: 99 mm, depth: 45.85 mm, color: yellow (similar RAL 1018)

ME 22,5 OT-3MSTBO YE - Upper housing part

2201417

<https://www.phoenixcontact.com/in/products/2201417>



DIN rail housing, Upper housing part for connectors with header, width: 22.6 mm, height: 102 mm, depth: 60.15 mm

ME 22,5 F-UT/FE YE - Mounting base housing

2202656

<https://www.phoenixcontact.com/in/products/2202656>



ME 22,5 OT-1MSTBO YE - Upper housing part

2201419

<https://www.phoenixcontact.com/in/products/2201419>

DIN rail housing, Upper housing part for connectors with header, width: 22.6 mm, height: 99 mm, depth: 45.85 mm, color: yellow (similar RAL 1018)



ME 22,5 OT-MKDSO SET YE - Upper housing part

2706399

<https://www.phoenixcontact.com/in/products/2706399>

DIN rail housing, Set comprised of upper housing part and 4 PCB terminal blocks (4-pos.) with screw connection, width: 22.6 mm, height: 99 mm, depth: 45.85 mm, color: yellow (similar RAL 1018)



ME 22,5 F-UT/FE YE - Mounting base housing



2202656

<https://www.phoenixcontact.com/in/products/2202656>

ME 22,5 OT-MSTBO YE - Upper housing part

2695934

<https://www.phoenixcontact.com/in/products/2695934>

DIN rail housing, Upper housing part for connectors with header, width: 22.6 mm, height: 99 mm, depth: 45.85 mm, color: yellow (similar RAL 1018)



Accessories

ME LPZS - PCB stop

2906911

<https://www.phoenixcontact.com/in/products/2906911>

DIN rail housing, after approx. 4 cm, the ME LPZS PCB pull-out stop prevents the PCB from being removed completely and locks the PCB in place



ME 22,5 F-UT/FE YE - Mounting base housing

2202656

<https://www.phoenixcontact.com/in/products/2202656>



ME-SAS - Shield connection clamp

2853899

<https://www.phoenixcontact.com/in/products/2853899>

Shield connection clamp for terminal points starting from 2.5 mm²



EML (44X53)R-ME - Label for ME ... F-UT ... housing

0828156

<https://www.phoenixcontact.com/in/products/0828156>



Label for ME ... F-UT ... housing, Roll, white, unlabeled, can be labeled with: THERMOMARK ROLLMASTER 300/600, THERMOMARK X1.2, THERMOMARK ROLL X1, THERMOMARK ROLL 2.0, THERMOMARK ROLL, mounting type: adhesive, Number of individual labels: 200, text field height: 53 mm, text field width: 44 mm

Phoenix Contact 2025 © - all rights reserved

<https://www.phoenixcontact.com>

PHOENIX CONTACT (I) Pvt. Ltd.

A-58/2, Okhla Industrial Area, Phase - II, New Delhi-110 020

+91.1275.71420

info@phoenixcontact.co.in