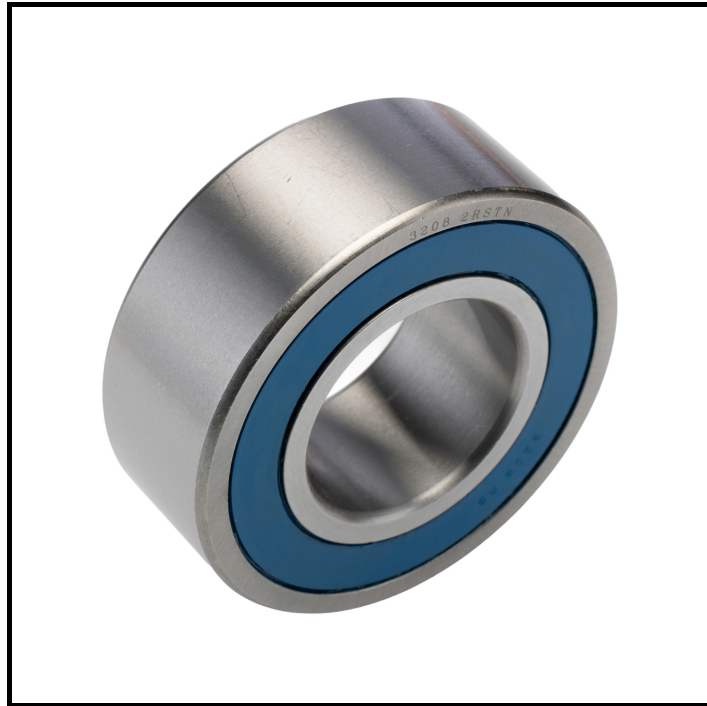


## FEATURES

- **Double Row Angular Contact Design:** Offers superior load capacity and stability in both radial and axial directions
- **Steel Ball and Race Material:** Ensures durability and resistance to wear under high-stress conditions
- **40° Contact Angle:** Enhances axial load handling capabilities
- **Sealed End Type:** Provides protection against contaminants, extending bearing life
- **Polyamide Cage Material:** Reduces friction and noise, improving operational efficiency
- **Dynamic Load Rating of 47.5 kN:** Supports heavy-duty applications with ease
- **Limiting Speed of 5600 rpm:** Suitable for high-speed operations

## RS PRO 40mm Double Row Angular Contact Ball Bearing

RS Stock No: 291-577



RS Professionally Approved Products bring to you professional quality parts across all product categories. Our product range has been tested by engineers and provides a comparable quality to the leading brands without paying a premium price

## Product Description

This RS PRO ball bearing is designed for high-performance applications requiring reliable load handling and precision. With a double row angular contact configuration, it provides enhanced support for both radial and axial loads, making it ideal for demanding industrial environments.

## General Specifications

Ball Material	Steel
Bearing Type	Double Row Angular Contact Ball
Bore Type	Parallel
Cage Material	Polyamide
Contact Angle	40 °
Dynamic Load Rating	47.5 kN
End Type	Sealed
Internal Clearance	CN
Limiting Speed	5600 rpm
Number of Rows	2
Product Type	Ball Bearing
Race Material	Steel
Race Type	Plain
Race Width	30.2 mm
Static Load Rating	34 kN

## Mechanical Specifications

Inside Diameter	40 mm
Outside Diameter	80 mm

## Approvals

Standards/Approvals	ANSI-ESD S20.20:2021
---------------------	----------------------

