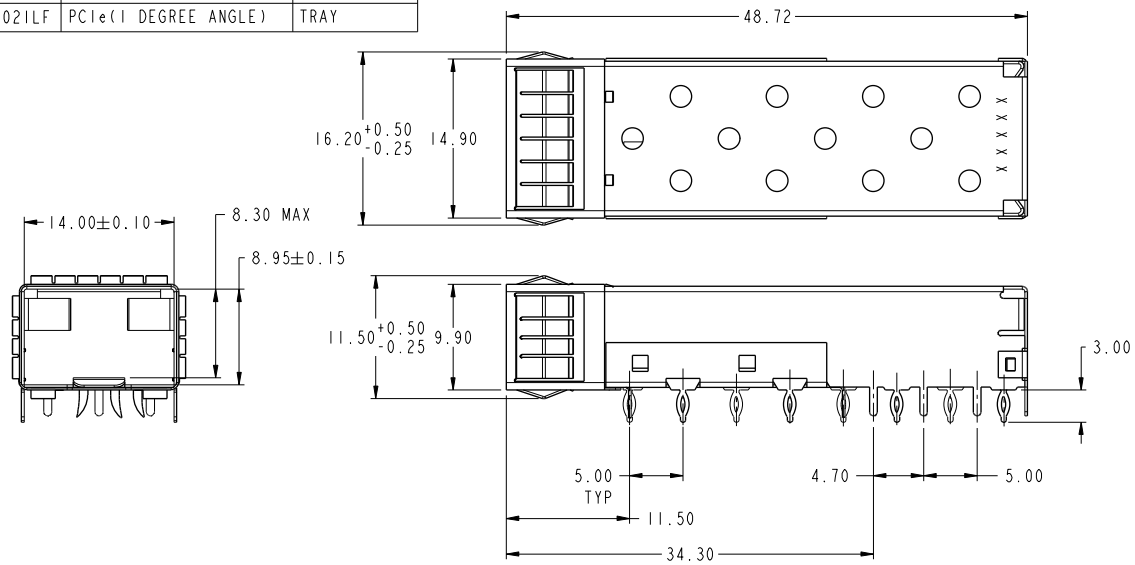
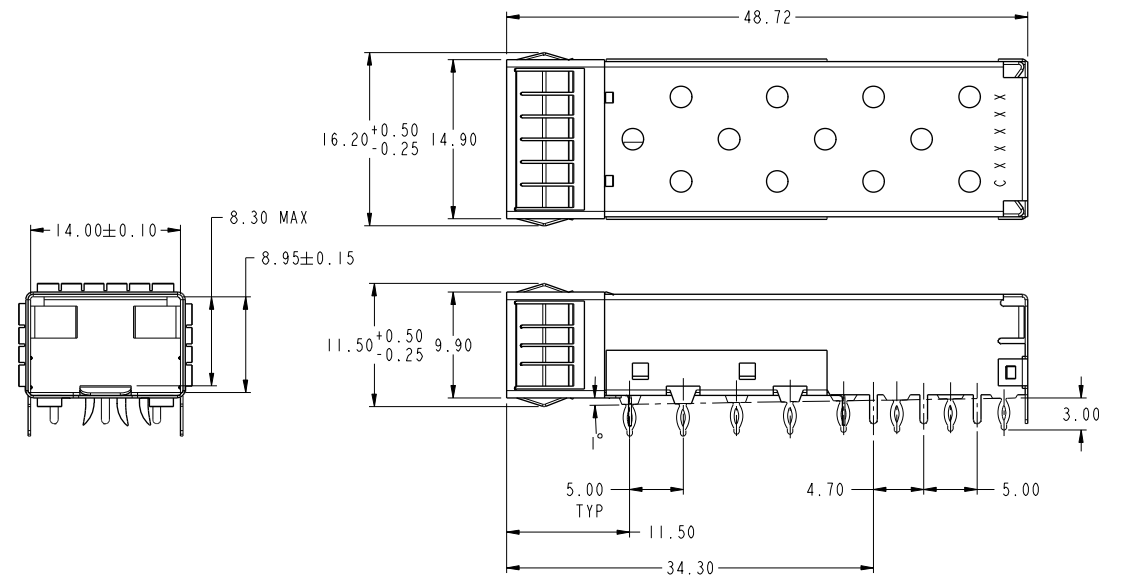


PRODUCT NUMBER	MOUNTING TYPE	PACKAGING
10099100-011LF	NORMAL(0 DEGREE ANGLE)	TRAY
10099100-021LF	PCIe(1 DEGREE ANGLE)	TRAY



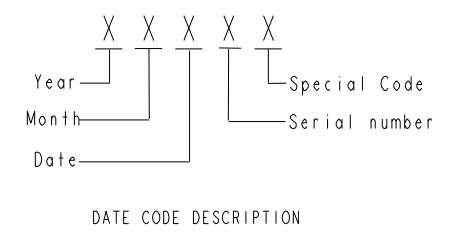
NORMAL TYPE (0 DEGREE ANGLE)



PCIe TYPE (1 DEGREE ANGLE)

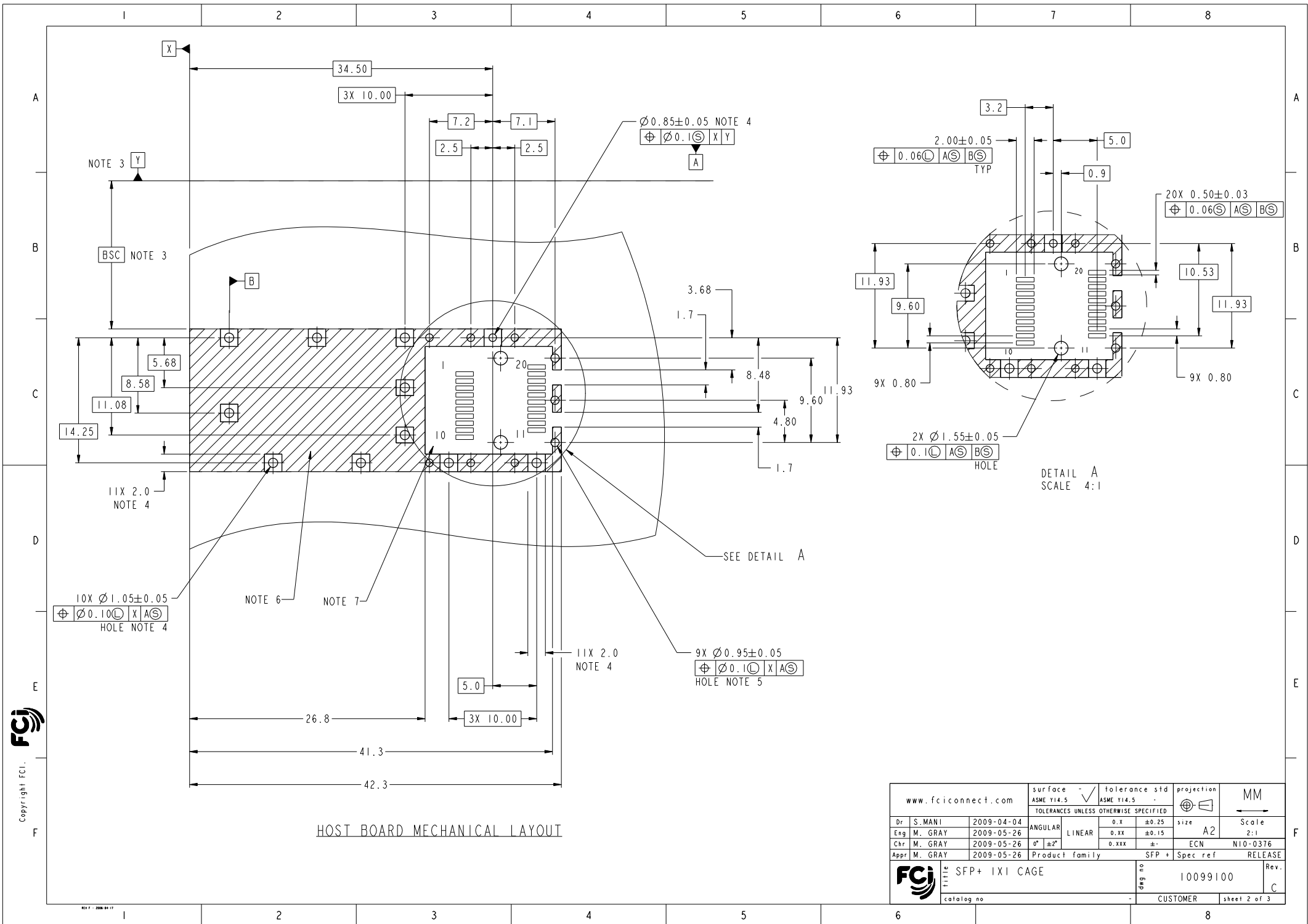
NOTES:

1. MATERIAL: COPPER ALLOY.
2. PLATING:  
CAGE BODY: 1.27µm MIN. NICKEL PLATING OVER ALL.  
EMI FINGER: 1.27µm MIN. SATIN TIN OVER 1.27µm MIN NICKEL UNDERPLATING.
3. DATUM AND BASIC DIMENSIONS ARE ESTABLISHED BY CUSTOMER.
4. PADS AND VIAS ARE CHASSIS GROUND, 11 PLACES.
5. THROUGH HOLES, PLATING OPTIONAL.
6. CROSS-HATCHED AREA DENOTES COMPONENT AND TRACE KEEP-OUT (EXCEPT CHASSIS GROUND).
7. THIS AREA DENOTES COMPONENT KEEP-OUT (TRACES ALLOWED).
8. PRODUCT SPECIFICATION: GS-12-616
9. APPLICATION SPECIFICATION: GS-20-125
10. PRODUCT MEETS EUROPEAN UNION DIRECTIVES AND OTHER COUNTRY REGULATIONS AS DESCRIBED IN GS-22-008.
11. DATE CODE BE PRINTED ON PROPER SURFACE.
12. PRINTED "C" MARK BEFORE DATE CODE FOR P/N: -021LF(PCIe TYPE).



www.fciconnect.com		surface ASME Y14.5	tolerance std ASME Y14.5	projection	MM
		TOLERANCES UNLESS OTHERWISE SPECIFIED			
Dr	S. MANI	2009-04-04	ANGULAR	0.x	±0.25
Eng	M. GRAY	2009-05-26	LINEAR	0.xx	±0.15
Chr	M. GRAY	2009-05-26	0° ±2°	0.xxx	±
Appr	M. GRAY	2009-05-26	Product family		SFP+
rev	ecn no	dr	date	size	Scale
A	V09-0442	SM	2009-11-02	A2	3:1
B	V10-0263	MRG	2010-06-14	ECN	N10-0376
C	N10-0376	ANDY	2010-11-24	Spec ref	RELEASE
FCI TITLE SFP+ 1X1 CAGE				10099100	Rev. C
catalog no				CUSTOMER	sheet 1 of 3

Copyright FCI.

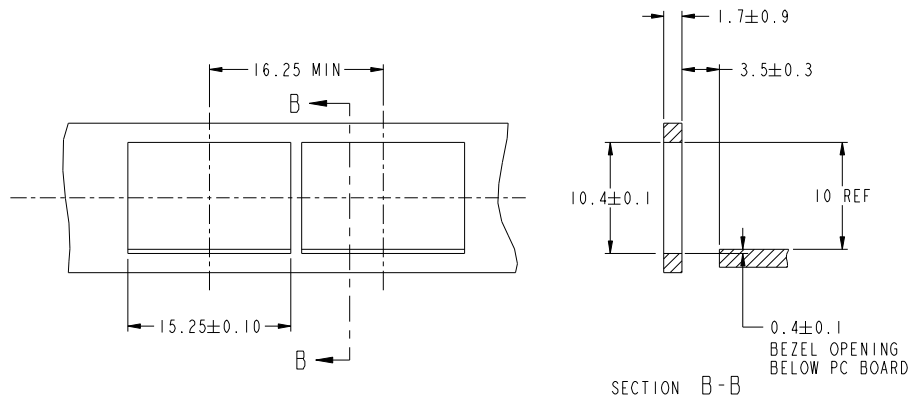


HOST BOARD MECHANICAL LAYOUT

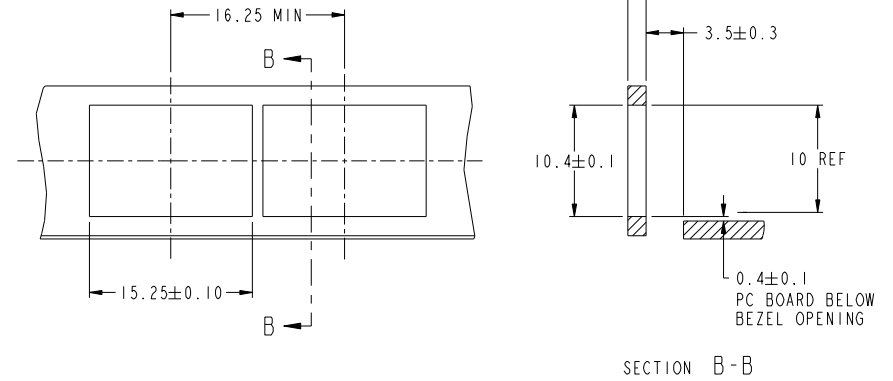
www.fciconnect.com		surface -	tolerance std -	projection	MM
		ASME Y14.5	ASME Y14.5		
TOLERANCES UNLESS OTHERWISE SPECIFIED					
Dr S. MANI	2009-04-04	ANGULAR	LINEAR	size	Scale
Eng M. GRAY	2009-05-26	0.x	0.xx	A2	2:1
Chr M. GRAY	2009-05-26	0°	0.xxx	ECN	N10-0376
Appr M. GRAY	2009-05-26	Product family	SFP +	Spec ref	RELEASE
		TITLE SFP+ IXI CAGE		diag no	10099100
catalog no		CUSTOMER		sheet 2 of 3	

Copyright FCI.

PRODUCT NUMBER	MOUNTING TYPE
10099100-011LF	NORMAL TYPE
10099100-021LF	FCIe TYPE



RECOMMENDED PANEL DESIGN  
FOR NORMAL TYPE



RECOMMENDED PANEL DESIGN  
FOR FCIe TYPE

Copyright FCI.  
FCI

www.fciconnect.com		surface -	tolerance std ASME Y14.5	projection	MM
		TOLERANCES UNLESS OTHERWISE SPECIFIED			
Dr	S. MANI	2009-04-04	ANGULAR	size A2	Scale 2:1
Eng	M. GRAY	2009-05-26	LINEAR	ECN	N10-0376
Chr	M. GRAY	2009-05-26	0° ±2°	Product family	SFP + Spec ref RELEASE
Appr	M. GRAY	2009-05-26	SFP + Spec ref		RELEASE
FCI		TITLE SFP+ 1X1 CAGE		diag no	10099100
catalog no		CUSTOMER		Rev.	C
				sheet 3 of 3	