

NOTES:

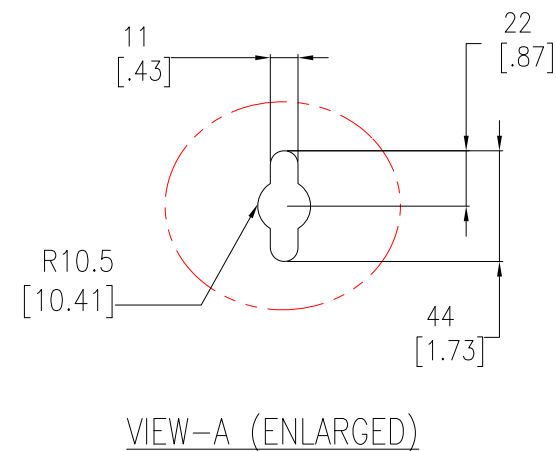
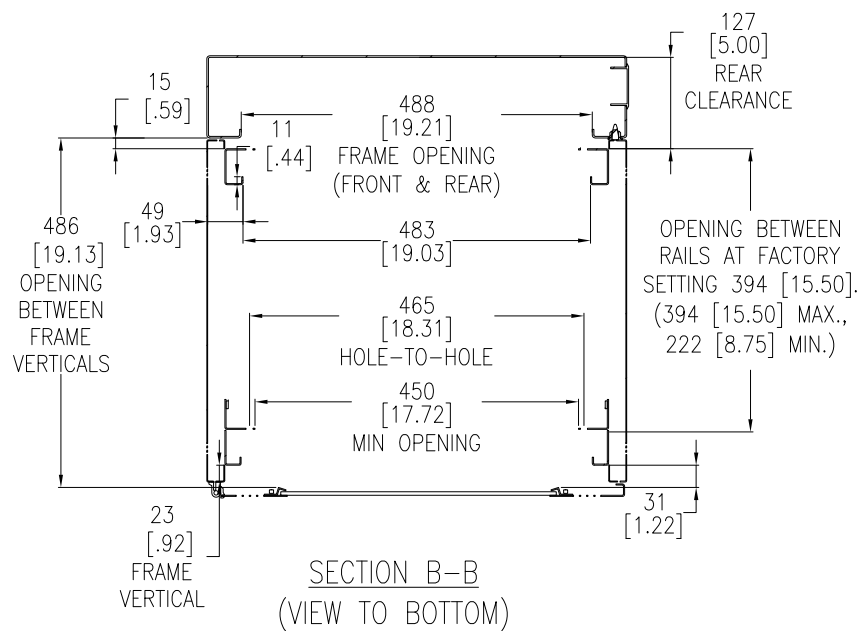
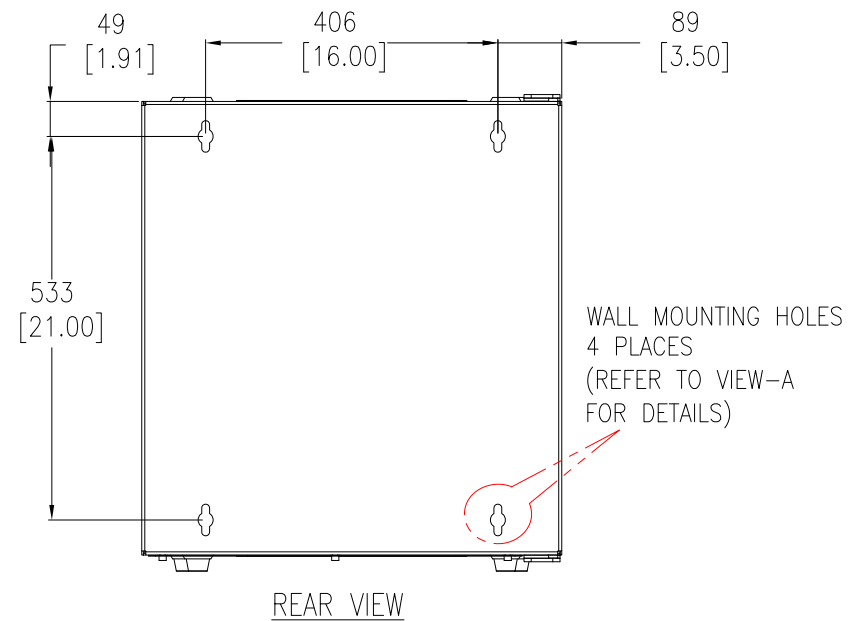
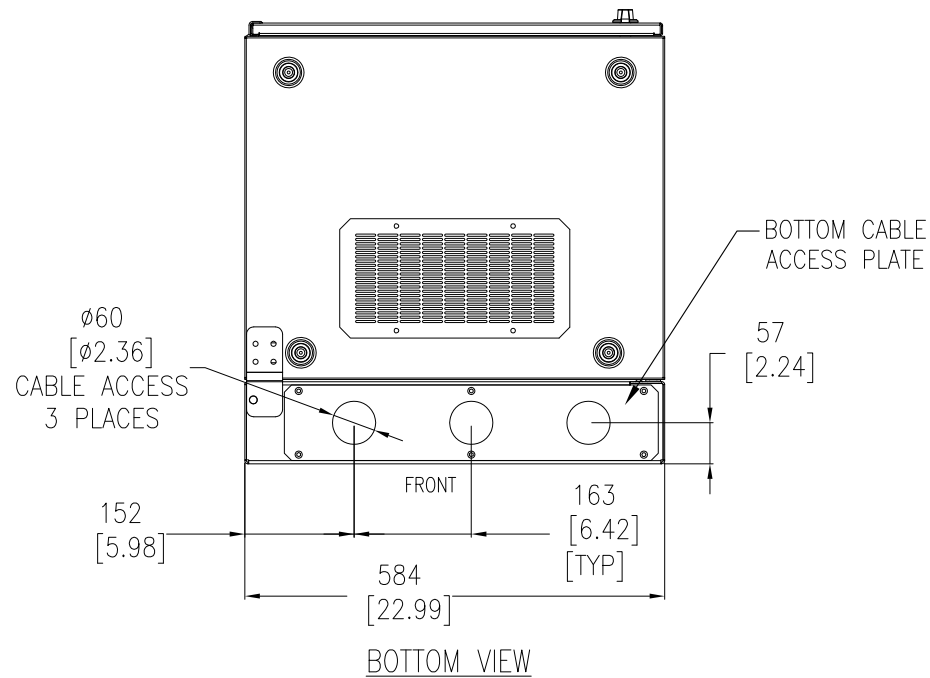
1. INSTALLATION MUST COMPLY WITH NATIONAL AND LOCAL ELECTRICAL REGULATIONS.
2. ENCLOSURE CAN BE REVERSED TO ACCOMMODATE VARIOUS CONFIGURATION, SO THAT DOOR OPENS IN THE OPPOSITE DIRECTION. PLEASE REFER TO THE PRODUCT MANUALS FOR DETAILED INFORMATION.
3. ALL DIMENSIONS ARE IN MILLIMETERS [INCHES].
4. NET WEIGHT OF UNIT IS 42.73 Kg [94 LBS].
5. CABLE ENTRY IS TOP, BOTTOM OR SIDE OF UNIT.
6. AIR FLOW AND SERVICE REQUIREMENTS, AS WELL AS MINIMUM CLEARANCE TO FIRE SUPPRESSION SYSTEMS SHOULD BE CONSIDERED WHEN LOCATING THE ENCLOSURE.

THIS DRAWING AND SPECIFICATIONS HEREIN ARE THE PROPERTY OF SCHNEIDER ELECTRIC AND SHALL NOT BE COPIED, REPRODUCED OR USED IN WHOLE OR IN PART, AS THE BASIS FOR THE MANUFACTURE OR SALE OF ITEMS WITHOUT WRITTEN PERMISSION FROM SCHNEIDER ELECTRIC. THIS DRAWING IS BASED UPON LATEST AVAILABLE INFORMATION AND IS SUBJECT TO CHANGE WITHOUT NOTICE.

Schneider Electric

TITLE: NetShelter WX 13U
WITH THREADED HOLE VERTICAL MOUNTING RAIL
VENTED FRONT DOOR
MAIN MECHANICAL
PROJECT: SUBMITTAL DRAWINGS SHEET 1 OF 4

DWG NO: AR100HD
DRAWN BY: V BUSH 09-JUL-10
ENGINEER: R RAGGIO 09-JUL-10
APPROVED BY: [Signature] 09-JUL-10
REV. 1
FIRST ANGLE PROJ



NOTES:

1. INSTALLATION MUST COMPLY WITH NATIONAL AND LOCAL ELECTRICAL REGULATIONS.
2. ALL DIMENSIONS ARE MILLIMETERS [INCHES].

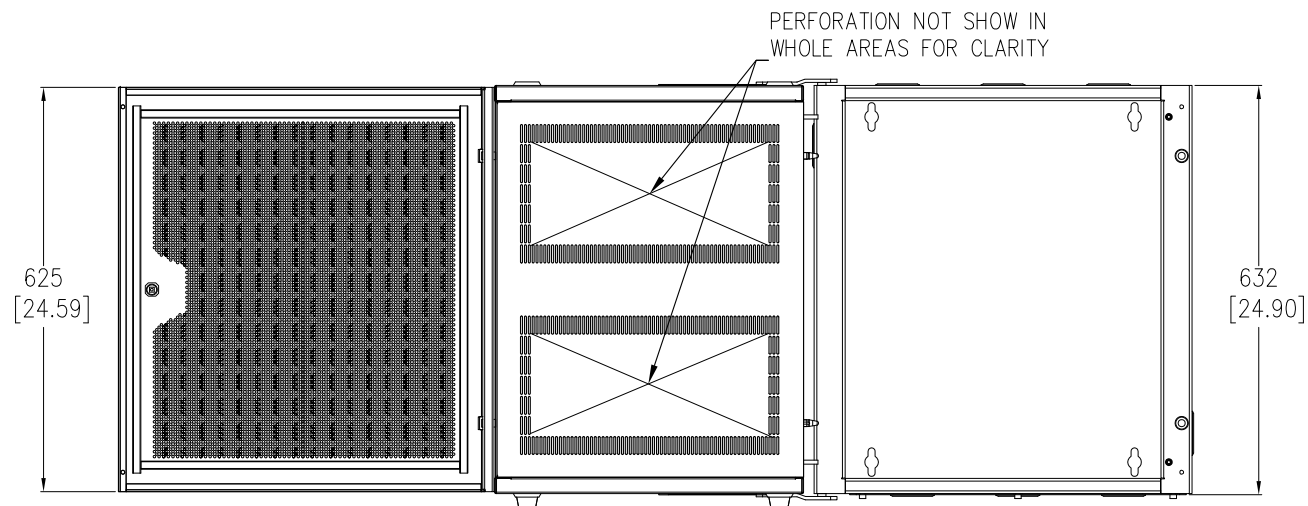
THIS DRAWING AND SPECIFICATIONS HEREIN ARE THE PROPERTY OF SCHNEIDER ELECTRIC AND SHALL NOT BE COPIED, REPRODUCED OR USED IN WHOLE OR IN PART, AS THE BASIS FOR THE MANUFACTURE OR SALE OF ITEMS WITHOUT WRITTEN PERMISSION FROM SCHNEIDER ELECTRIC. THIS DRAWING IS BASED UPON LATEST AVAILABLE INFORMATION AND IS SUBJECT TO CHANGE WITHOUT NOTICE.

Schneider Electric

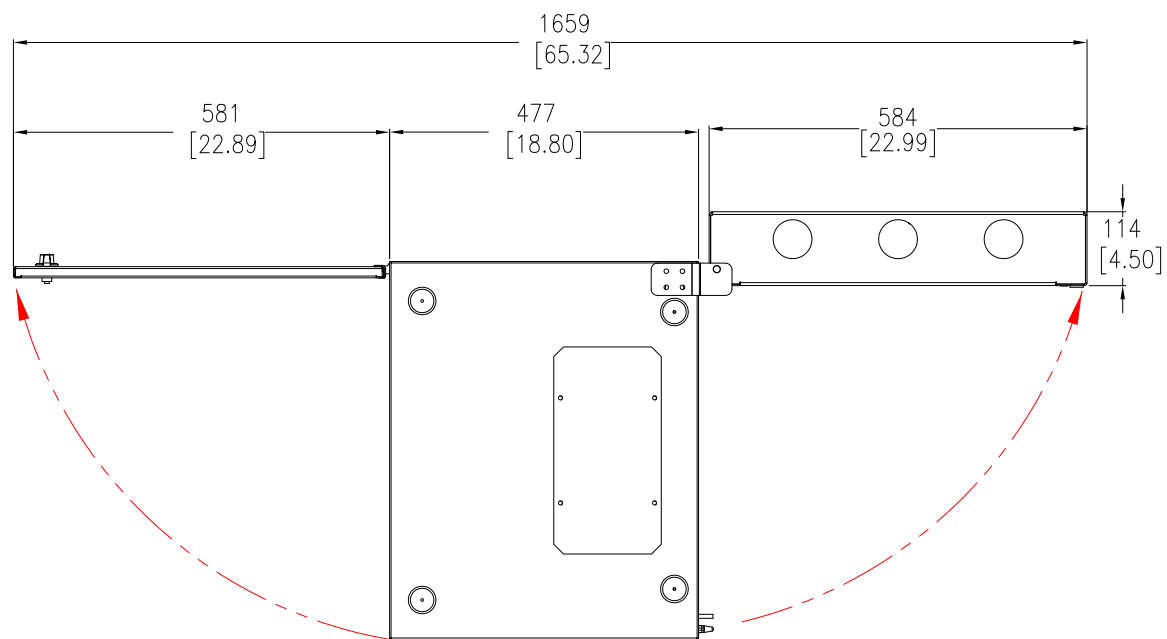
TITLE: NetShelter WX 13U WITH THREADED HOLE VERTICAL MOUNTING RAIL VENTED FRONT DOOR BOTTOM AND REAR VIEWS
PROJECT: SUBMITTAL DRAWINGS SHEET 2 OF 4

DWG NO: AR100HD
DRAWN BY: V BUSH/S CUNHA
ENGINEER: R RAGGIO/J KUMMER
APPROVED BY: S VOCCIO

REV: 2
11-MAR-13
11-MAR-13
11-MAR-13
FIRST ANGLE PROJ



RIGHT SIDE VIEW
(WITH BOTH DOORS OPEN)



TOP VIEW

NOTES:

1. INSTALLATION MUST COMPLY WITH NATIONAL AND LOCAL ELECTRICAL REGULATIONS.
2. ALL DIMENSIONS ARE MILLIMETERS [INCHES].

THIS DRAWING AND SPECIFICATIONS HEREIN ARE THE PROPERTY OF SCHNEIDER ELECTRIC AND SHALL NOT BE COPIED, REPRODUCED OR USED IN WHOLE OR IN PART, AS THE BASIS FOR THE MANUFACTURE OR SALE OF ITEMS WITHOUT WRITTEN PERMISSION FROM SCHNEIDER ELECTRIC. THIS DRAWING IS BASED UPON LATEST AVAILABLE INFORMATION AND IS SUBJECT TO CHANGE WITHOUT NOTICE.

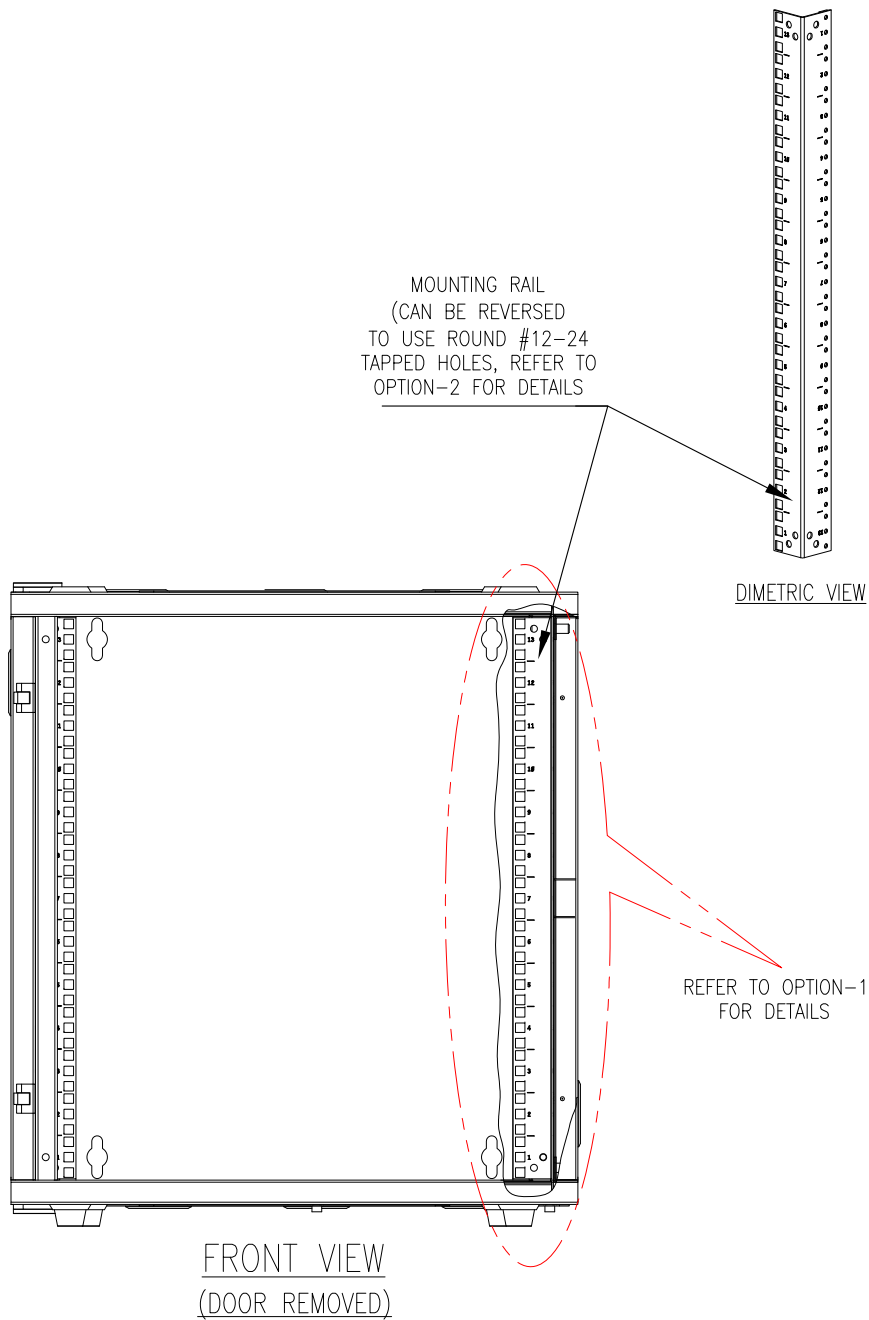
Schneider Electric

TITLE: NetShelter WX 13U
WITH THREADED HOLE VERTICAL MOUNTING RAIL
VENTED FRONT DOOR
INTERNAL VIEW

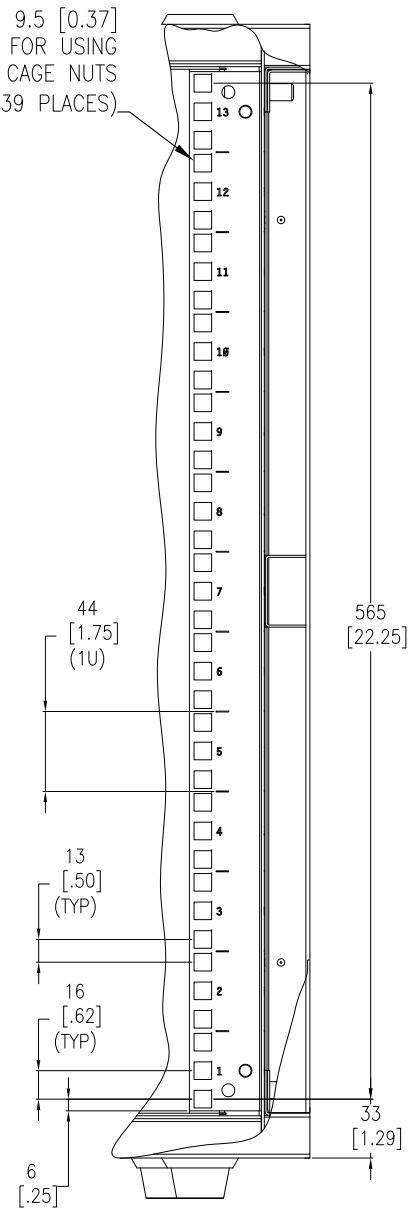
PROJECT: SUBMITTAL DRAWINGS SHEET 3 OF 4

DWG NO: AR100HD
DRAWN BY: V BUSH 09-JUL-10
ENGINEER: R RAGGIO 09-JUL-10
APPROVED BY: SCHNEIDER ELECTRIC 09-JUL-10

REV. 1
FIRST ANGLE
PROJ.

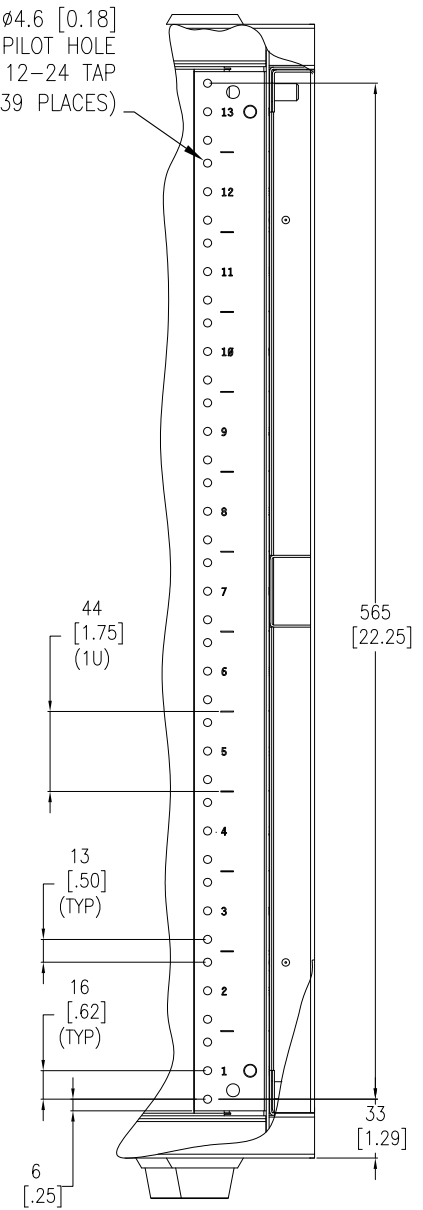


9.5 [0.37] X 9.5 [0.37]
SQUARE FOR USING
CAGE NUTS
(39 PLACES)



MOUNTING RAIL DETAILS
OPTION-1 (ENLARGED)

Ø4.6 [0.18]
PILOT HOLE
FOR 12-24 TAP
(39 PLACES)



MOUNTING RAIL DETAILS
OPTION-2 (ENLARGED)

NOTES:

1. INSTALLATION MUST COMPLY WITH NATIONAL AND LOCAL ELECTRICAL REGULATIONS.
2. ALL DIMENSIONS ARE MILLIMETERS [INCHES].

THIS DRAWING AND SPECIFICATIONS HEREIN ARE THE PROPERTY OF SCHNEIDER ELECTRIC AND SHALL NOT BE COPIED, REPRODUCED OR USED IN WHOLE OR IN PART, AS THE BASIS FOR THE MANUFACTURE OR SALE OF ITEMS WITHOUT WRITTEN PERMISSION FROM SCHNEIDER ELECTRIC. THIS DRAWING IS BASED UPON LATEST AVAILABLE INFORMATION AND IS SUBJECT TO CHANGE WITHOUT NOTICE.

Schneider Electric

TITLE: NetShelter WX 13U
WITH THREADED HOLE VERTICAL MOUNTING RAIL
VENTED FRONT DOOR
MOUNTING DETAILS
PROJECT: SUBMITTAL DRAWINGS SHEET 4 OF 4

DWG NO: AR100HD
DRAWN BY: JAUAPRAKASH
ENGINEER: K THOMAS/J BORGESCH
APPROVED BY: [Signature]
18-DEC-09
18-DEC-09
18-DEC-09
REV: 0
FIRST ANGLE
PROJ