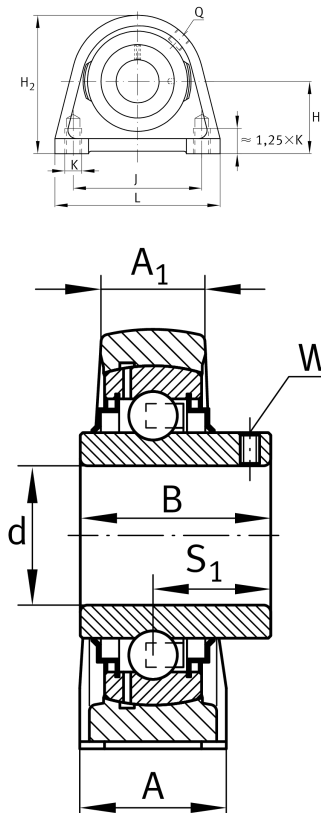
**RSHEY17-XL**

## Plummer block housing unit

Plummer block housing units RSHEY, cast iron housing, radial insert ball bearing with grub screws in inner ring, R seals

**X-life**

## Technical information

**Your current product variant**

Material	GG	Grey cast iron
----------	----	----------------

**Main Dimensions & Performance Data**

d	17 mm	Bore diameter
L	63 mm	Length total
H <sub>2</sub>	57 mm	Height
≈m	0.63 kg	Weight

**Mounting dimensions**

J	47 mm	Distance fixing bore
K	M8	Thread fixing bore

**Dimensions**

H	30.2 mm	Distance shaft axis
A	30 mm	Width (base)
A <sub>1</sub>	18 mm	Width (head)
Q	M6	Connection thread for lubrication
B	27.4 mm	Width of inner ring
S <sub>1</sub>	15.9 mm	Distance of raceway to locking collar



Additional information

SHE03	Housing
GYE17-XL-KRR-B	Bearing designation

Temperature range

T <sub>min</sub>	-20 °C	Operating temperature min.
T <sub>max</sub>	120 °C	Operating temperature max.