

Features

- Flexible mounting
- Compact
- Precise movement
- High precision
- Magnetic
- Rubber cushioned

RS PRO Compact Guide Cylinder

0180278



RS PRO is the own brand of RS. The RS PRO Seal of Approval is your assurance of professional quality, a guarantee that every part is rigorously tested, inspected, and audited against demanding standards. Making RS PRO the Smart Choice for our customers.

Product Description

The slide cylinders are designed to be used in compact spaces and offer precise movement and positioning. They offer double the output force using their double cylinders with high guiding accuracy and are suitable for use with magnetic switches.

- *Lifting, sliding, moving, pulling, and pushing*
- *Packaging, handling, printing, semiconductor, automation, robotics, and manufacturing industries*

General Specifications

Stroke	See table below for more details
Bore	See table below for more details
Manufacturer Series	SQM
Action	Double
Pneumatic Connector	M5x0.8
Maximum Operating Pressure	10 bar
Cushioning Type	Rubber

Mechanical Specifications

Body	Aluminium
Rod	Steel
Maximum Operating Temperature	70°C
Minimum Operating Temperature	-20°C
Dimensions	See table below for more details
Weight	See table below for more details
Length	See table below for more details


RS PRO SQM Series Compact Guide Cylinder

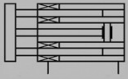
Stock No.	Series Model	Bore (mm)	Stroke (mm)	Length (mm)	Height (mm)	Width (mm)	Weight (g)
0180278	SQM	20	15	59	36	36	250
0180280	SQM	20	30	74	36	36	390
0180281	SQM	25	25	71	40	40	350
0180283	SQM	25	50	96	10	40	470

Technical Data

SQM

Guide Rod Type Cylinder





Bore Size(mm)	12	16	20	25	32	40
Acting type	Double Acting					
Working medium	Clean Air (40 μ filtration)					
Working pressure (Mpa)	0.1~1.0					
Guaranteed pressure(Mpa)	1.5					
Working temperature	-20~70(No freezing)					
Speed range	30~500					
Stroke tolerance	+1.0 0					
Cushion type	Rubber cushion					
Port Size	M5X0.8				G1/8①	
Non-rotating tolerance	±0.2°			±0.1°		

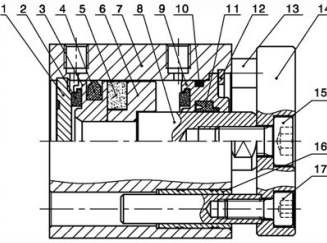
① PT、NPT port size is optional.

◎ **Stroke**

	Bore (mm)	Standard Stroke (mm)															Max. Stroke (mm)
	12, 16	5	10	15	20	25	30									30	
Double Acting	20, 25	5	10	15	20	25	30	35	40	45	50						50
	32, 40	5	10	15	20	25	30	35	40	45	50	75	100		100		

Note: The dimensions of non-std stroke cylinder has the same dimensions as the next longer stroke std. stroke cylinder.
e.g. 27mm stroke cylinder has the same dimensions of 30 std. stroke cylinder.
When ordering stroke is larger than the maximum stroke, please contact us.

◎ **Internal Structure**

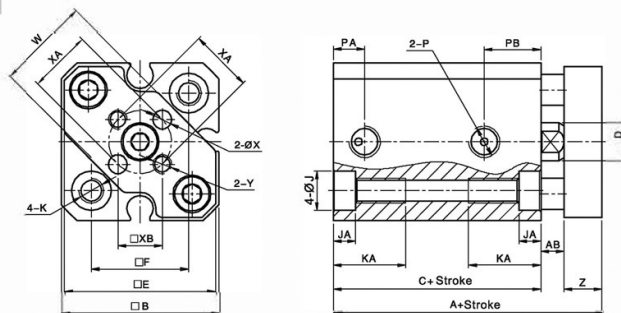


NO.	Part Name	Material
1	Rear cover	Aluminum alloy
2	Anti-bump cushion	TPU
3	Piston	Aluminum alloy
4	Piston seal	NBR
5	Integral magnet	RbFeB
6	Magnet base	Aluminum alloy
7	Barrel	Aluminum alloy
8	Piston rod	Carbon steel
9	head cover	Aluminum alloy
10	O-ring	NBR
11	Piston rod seal	TPU
12	C type retainer ring	Spring steel
13	Rod	Stainless steel
14	Fixed plate	Aluminum alloy
15	Hex socket cap screw	Carbon steel
16	Sliding bearing	Brass
17	Hex socket cap screw	Carbon steel

Dimensions

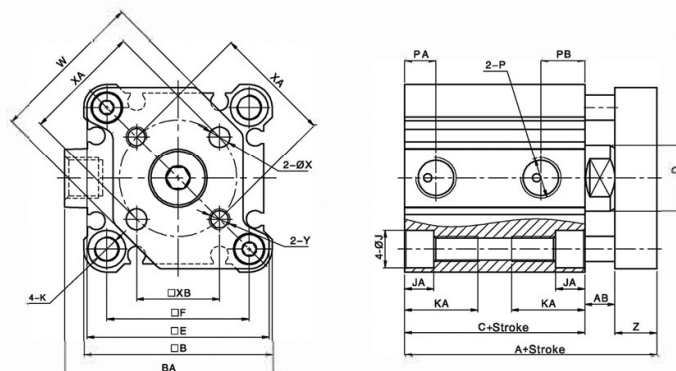
○ Main Dimension

SQMΦ12~25



Bore/Sign	A		C		AB	B	D	E	F	J	JA	K									
	Standard	With magnet	Standard	With magnet																	
	12	26.5	37.5	17									28	3.5	25	6	24	15.5	6.3	3.5	M4X0.7 Throgh hole : Φ 3.4
	16	28	40	18.5									30.5	3.5	29	8	28	20	6.5	3.5	M4X0.7 Throgh hole : Φ 3.4
	20	32	44	19.5									31.5	4.5	36	10	35	25.5	9	7	M6X1.0 Throgh hole : Φ 5.2
25	35.5	45.5	22.5	32.5	5	40	12	39	28	9	7	M6X1.0 Throgh hole : Φ 5.2									
Bore/Sign	KA	P	PA	PB		W	X	XA	XB	Y	Z										
	12	11.5	M5X0.8	5	7.5							9	15	3	10	7.1	M3X0.5	6			
	16	11.5	M5X0.8	5.5	8							9.5	21	3	14	9.9	M3X0.5	6			
	20	18	M5X0.8	5.5	9							9	26	4	17	12	M4X0.7	8			
	25	17.5	M5X0.8	5.5	11							11	29	5	22	15.6	M5X0.8	8			

SQMΦ32、Φ40



Bore/Sign	A		C		AB	B	BA	D	E	F	J	JA
	Standard	With magnet	Standard	With magnet								
32	40	50	23	33	7	45	49.5	16	43.5	34	9	3
40	46.5	56.5	29.5	39.5	7	52	57	16	50.5	40	9	3
Bore/Sign	K		KA	P	PA	PB	W	X	XA	XB	Y	Z
32	M6X 1.0 Throgh hole : Φ 5.2		17.5	1/8"	7.5	10.5	37	5	28	19.8	M5X0.8	10
40	M6X 1.0 Throgh hole : Φ 5.2		17.5	1/8"	8	11	46	5	33	23.3	M5X0.8	10

Accessories

Stock No.	Brand	Product Name	Length	Number of Wires	Connection
235-1163	RS PRO	Magnetic switch	2 mtr	NA	QD8 Male
235-1161	RS PRO	Magnetic switch	2 mtr	3 wire	NA