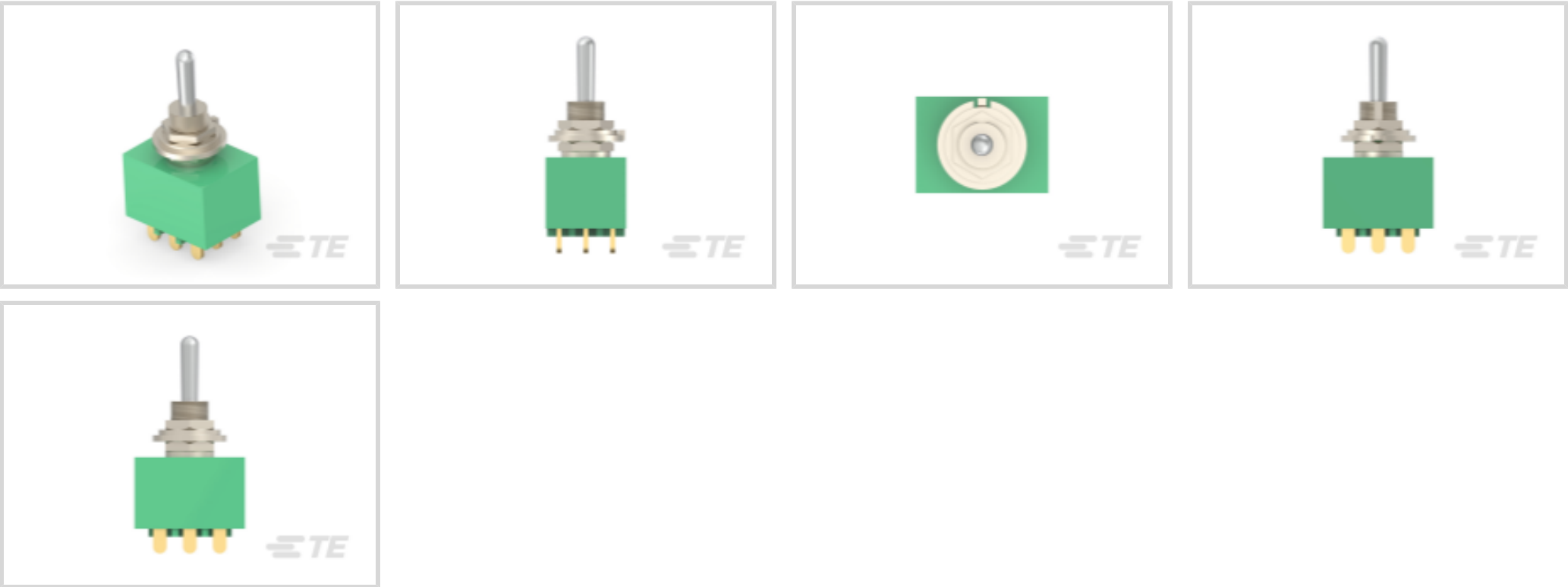




Switches > Toggle Switches



Contact Current Rating: **6 A**

Configuration (Pole-Throw): **Three Pole - Double Throw**

Operating Function: **On None On**

Number of Positions: **2**

Operating Voltage: **28 VDC**

Features

Product Type Features

Sealed Device	Yes
Switch Connection Type	Wire Lugs
Toggle Style	Baton Long
Switch Type	Toggle Switch

Configuration Features

Configuration (Pole-Throw)	Three Pole - Double Throw
Operating Function	On None On
Number of Positions	2

Electrical Characteristics

Contact Resistance	10 mΩ
Insulation Resistance	1000 MΩ
Dielectric Withstanding Voltage (Max)	1500 VAC
Contact Current Rating	6 A
Operating Voltage	125 VAC



Body Features

Actuator Finish	Chrome
Case Color	Green
Product Orientation	Vertical
Bushing Style	Threaded
Bushing Thread Size	1/4-40

Contact Features

Contact Base Material	Copper Alloy
Switch Contact Plating Material	Gold Flash over Silver

Mechanical Attachment

Product Mount Type	Panel Mount
--------------------	-------------

Housing Features

Process Sealed	No
----------------	----

Dimensions

Toggle Length	10.49 mm[.413 in]
---------------	-------------------

Industry Standards

UL Flammability Rating	UL 94V-0
------------------------	----------

Product Compliance

For compliance documentation, visit the product page on TE.com>


EU RoHS Directive 2011/65/EU	Compliant with Exemptions
EU ELV Directive 2000/53/EC	Compliant
China RoHS 2 Directive MIIT Order No 32, 2016	Restricted Materials Above Threshold
EU REACH Regulation (EC) No. 1907/2006	Current ECHA Candidate List: JAN 2025 (247) Candidate List Declared Against: JAN 2025 (247) SVHC > Threshold: Pb (.6% in Component Part) Article Safe Usage Statements: Do not eat, drink or smoke when using this product. Wash thoroughly after handling. Recycle if possible and dispose of the article by following all applicable governmental regulations relevant to your geographic location.
Halogen Content	Not Low Halogen - contains Br or Cl > 900 ppm.
Solder Process Capability	Wave solder capable to 265°C




Product Compliance Disclaimer

This information is provided based on reasonable inquiry of our suppliers and represents our current actual knowledge based on the information they provided. This information is subject to change. The part numbers that TE has identified as EU RoHS compliant have a maximum concentration of 0.1% by weight in homogenous materials for lead, hexavalent chromium, mercury, PBB, PBDE, DBP, BBP, DEHP, DIBP, and 0.01% for cadmium, or qualify for an exemption to these limits as defined in the Annexes of Directive 2011/65/EU (RoHS2). Finished electrical and electronic equipment products will be CE marked as required by Directive 2011/65/EU. Components may not be CE marked. Additionally, the part numbers that TE has identified as EU ELV compliant have a maximum concentration of 0.1% by weight in homogenous materials for lead, hexavalent chromium, and mercury, and 0.01% for cadmium, or qualify for an exemption to these limits as defined in the Annexes of Directive 2000/53/EC (ELV). Regarding the REACH Regulation, the information TE provides on SVHC in articles for this part number is based on the latest European Chemicals Agency (ECHA) 'Guidance on requirements for substances in articles' posted at this URL: <https://echa.europa.eu/guidance-documents/guidance-on-reach>


Compatible Parts




TE Part # 1-1437558-1
MTA106DPC=(MSTA) SW TOG P/C TE




TE Part # 7-1437558-2
MTE206N=(MSTE) SWITCH TOGGLE W



TE Part # 8-1437558-3
MTF106D=(MST-49) SW TOG SPDT



TE Part # 2-1437558-0
MTA206N=(MSTA) SW TOG DPDT



TE Part # 1-1437558-0
MTA106D=(MSTA) SWITCH TOGGLE S

Customers Also Bought



TE Part #CAT-SCH691-T1
PCB Power Relay: 30 Amp, Monostable DC



TE Part #1-1617543-2
JMGSCDD-9MW=M39016/43-051M



TE Part #204504-1
RECEPT ASSY,SZ 3,AMPLIMITE



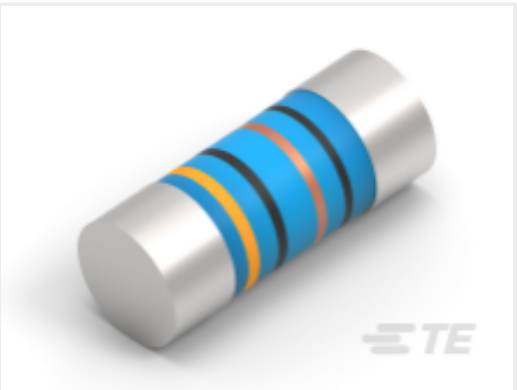
TE Part #324051
TERMINAL,T-N R 4 5/16



TE Part #3-1419108-1
[RTD14024F](#)



TE Part #1393114-2
[KUEP-3D15-48=KU](#)



TE Part #3-2176315-7
[MELF SMA_A 100K 0.1% 15PPM 0204 0.4W](#)



TE Part #5-826953-0
[50P MODU 2 PIN HDR.](#)



TE Part #9062290001
[RPS-8-4/2.0-S1-9](#)

Documents

Product Drawings

[MTA306D=\(MSTA\) SW TOG 3PDT](#)

English

CAD Files

Customer View Model

[ENG_CVM_CVM_3-1437558-5_F1.3d_igs.zip](#)

English

Customer View Model

[ENG_CVM_CVM_3-1437558-5_F1.3d_stp.zip](#)

English

Customer View Model

[ENG_CVM_CVM_3-1437558-5_F1.2d_dxf.zip](#)

English

3D PDF

3D

By downloading the CAD file I accept and agree to the [Terms and Conditions](#) of use.

Datasheets & Catalog Pages

[2-1773458-6_GREEN_SERIES_SWITCHES](#)

English