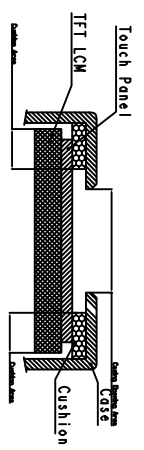
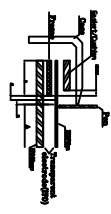


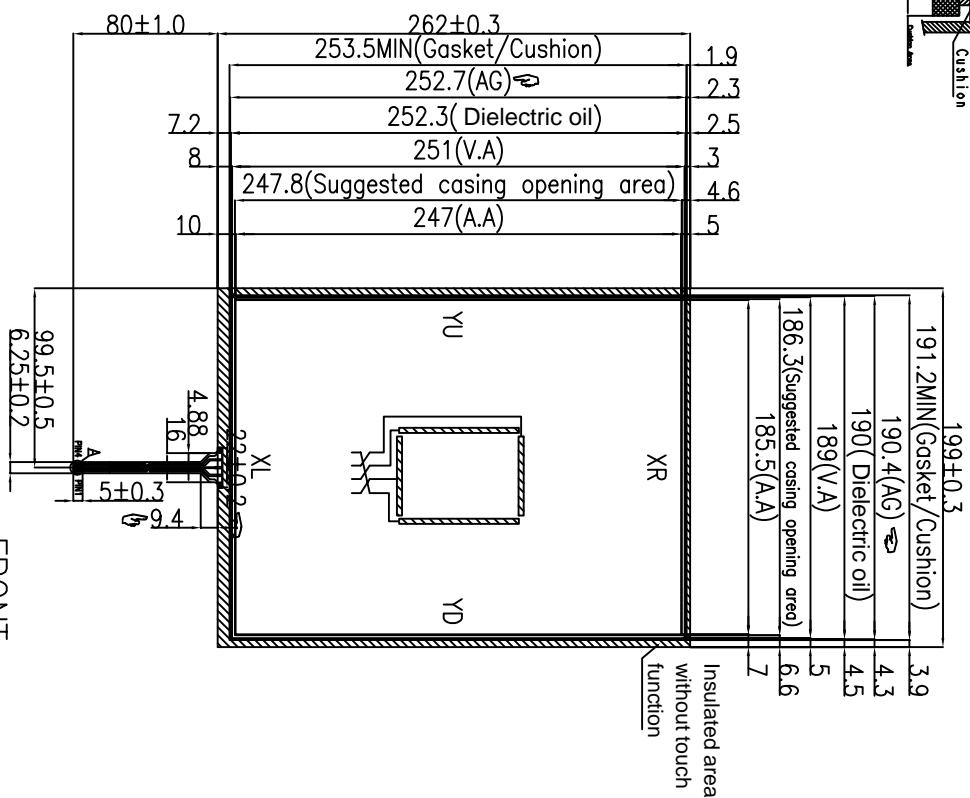
REV	ECN NO.	DESCRIPTION	SIGN	DATE
A				



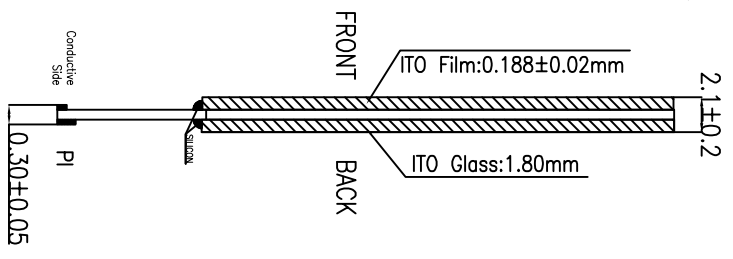
Structure and Area definition



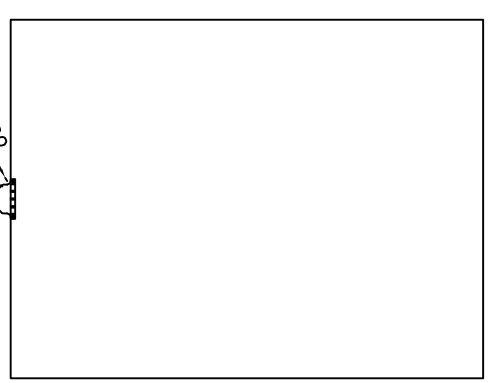
Active area which guarantees a touch panel operation with following characteristics when passed.
 (1)Operation force, (2)Electric characteristics, (3)Tapping durability, (4)Pen sliding durability.
 The area which does not guarantee a touch panel operation and its function when this area is pressed, touch panel shows degradation of its performance. The area which does not guarantee durability becomes about one-tenth compared with the active area (A) as guaranteed area) and its operation force requires about double, about 0.5mm to this area. A boundary of the active corresponds to this area.
 C-Pressing prohibition area, The area which is prohibited to be pressed because of possible lead to cracked ITO film and electrode and electrode damage is given to touch panel function by pressing. Non-Active area The area which does not include even if pressed.



FRONT



BACK

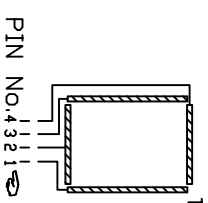


- Notes:
1. Type: Film to Glass
 2. Operating Voltage: ≤5V
 3. operation Temperature: -20°C~70°C
Storage Temperature: -30°C~80°C
 4. Life Time: ≥1,000,000 times;
 5. Connect Material: FPC
 6. Response Time: ≤10ms
 7. Linearity: ≤2.0%
 8. Transmittance: ≥78%
 9. Surface Hardness: ≥3H(Pencil)
 10. operation force: ≤120g
 11. Resistance:

Please double check the points marked in finger.

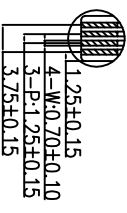
(Anti-glare Hard & Mate anti-newton ring coating ITO Film) Y:1000~5500
 (Stand ard ITO Glass) X:2500~8500

12. Unspecified Tolerance: ±0.30
13. All materials in the drawing coincide with the RoHS&halogen free requirement



Pin No.	Description
1	XL
2	YU
3	XR
4	YD

DETAIL A
 SCALE 4/1



CUSTOMER APPROVED:		R&E MODEL:			
		RTP-12.1			
		DESIGNED	FUJ	20250604	
SCALE 1:1	UNIT mm	CHECKED	LCB	20250604	
REV Ver.1	SIZE A3	3rd Angle	SHT 1 OF 1	APPROVED PGJ	20250604