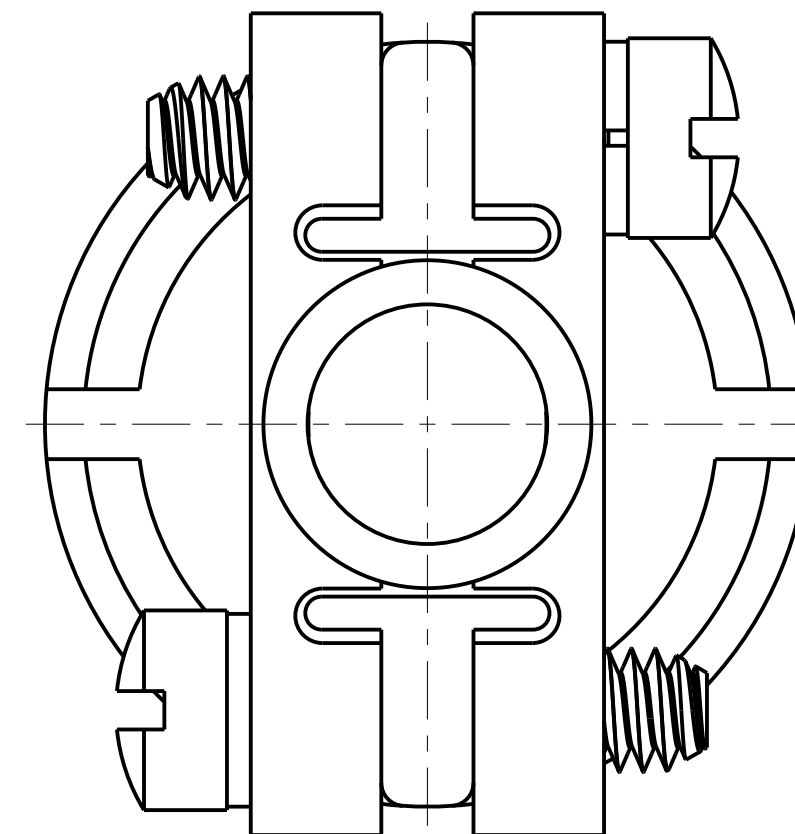
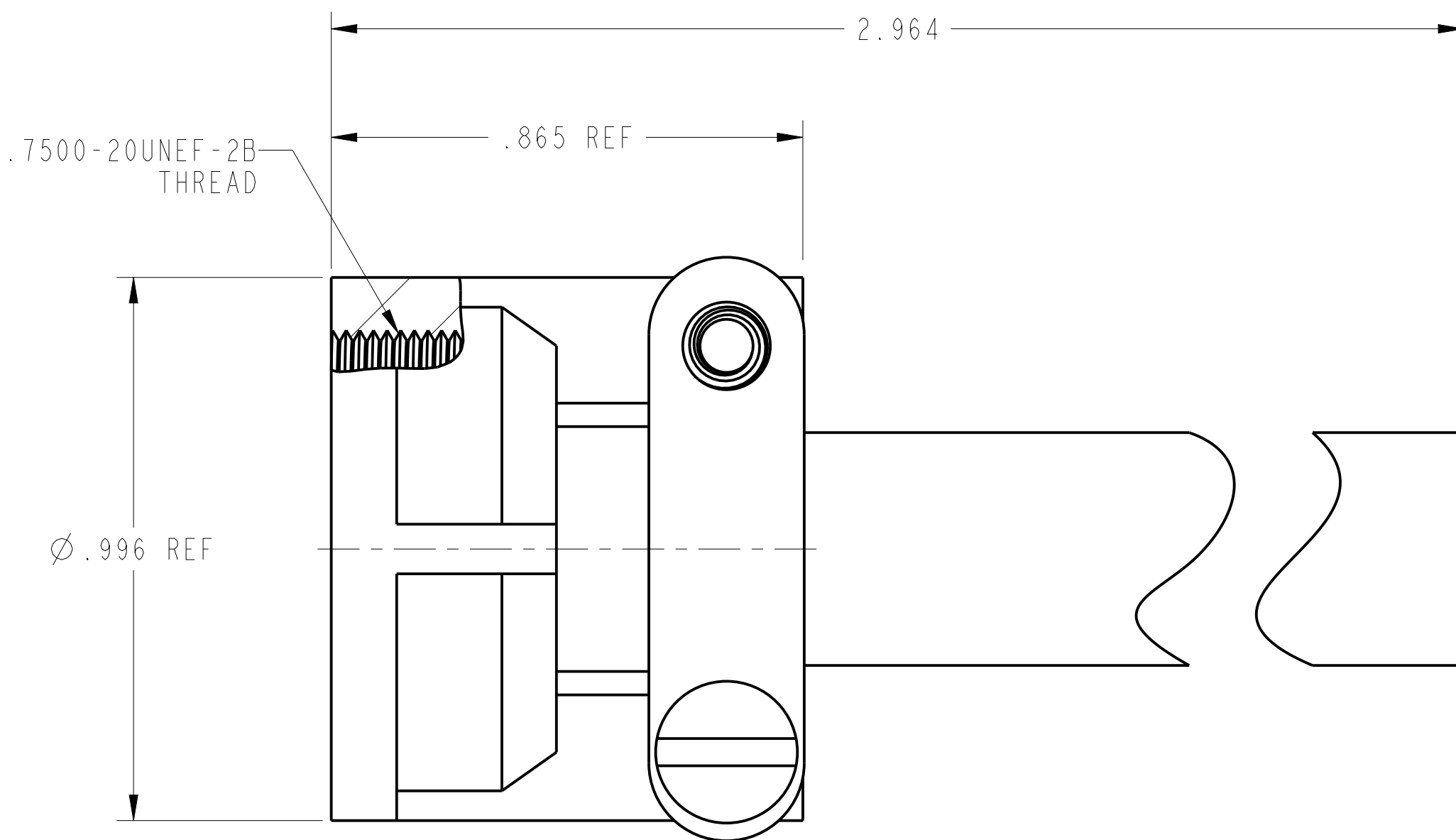
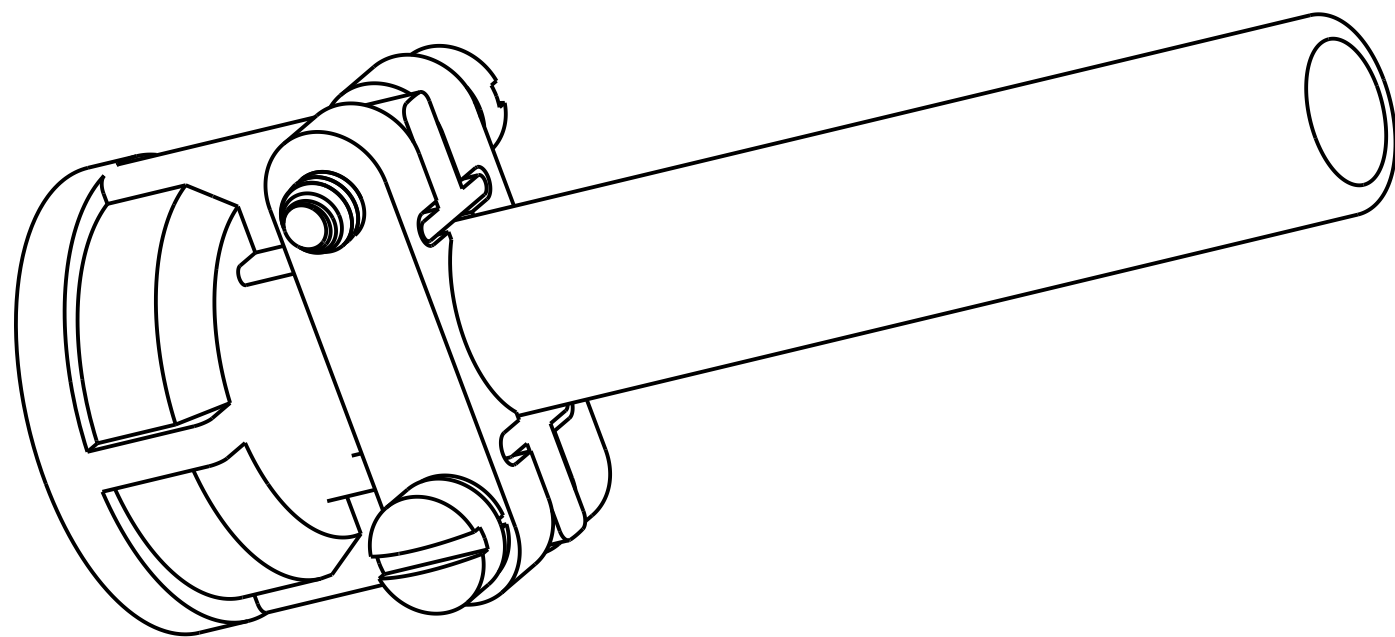


REVISIONS		
REV	DESCRIPTION	DATE
PA1	INITIAL RELEASE	2016-11-03

**CUSTOMER DRAWING**



**NOTES:**

THIS DOCUMENT CONTAINS PROPRIETARY INFORMATION AND SUCH INFORMATION MAY NOT BE DISCLOSED TO OTHERS FOR ANY PURPOSE OR USED FOR MANUFACTURING PURPOSES WITHOUT WRITTEN PERMISSION FROM THE AMPHENOL CORP.

N/A  
NEXT ASSEMBLY

PRO/ENGINEER INFORMATION  
Pro/e Model Used:  
97-3057-1007-1.ASSEM  
Drawing Name:  
97-3057-1007-1

UNLESS OTHERWISE SPECIFIED		SPECIFICATIONS	POS	QTY	PART NUMBER	DESCRIPTION	NOTE	
LINEAR DIMENSIONS ARE IN INCHES TOLERANCES: .XXXX = ±.0005 ANGLES= ±2° .XXX = ±.010 .XX = ±.03 .X = ±.1 DIM. & TOL. PER ASME Y14.5M; DRM PER MIL-DTL-31000; OTHER Amphenol Stds. PER 9-3800 LEGENDS: =FLAG NOTE CALL OUT REFERENCE ONLY		MATERIAL SPEC. N/A	APPROVALS		DATE	<b>PARTS LIST</b> <b>AMPHENOL INDUSTRIAL OPERATIONS</b> Amphenol Technology(Zhuhai)Co.,Ltd No.63, Xinghan Road, Sanzao Town, Jinwan, Zhuhai, PRC <b>CABLE CLAMP ASSEMBLY</b> <b>97-3057-1007-1</b> <b>O.D. CADMIUM PLATING</b>		
PROCESS SPEC. N/A		PREPARED BY LIANG XU ENGINEER IN CHARGE LISA LI DESIGN MANAGER RAN XIAO DESIGN ACTIVITY GROUP C3		Nov-03-16	SIZE <b>C</b> CAGE CODE <b>77820</b> DOCUMENT NO. REF. N/A SCALE: 4.0 SHEET 1 OF 1			
		THIRD ANGLE PROJECTION		REV. <b>PA1</b>				

DOCUMENT NO.

SHEET 1 OF 1

REV. PA1

C

B

A

FORMAT: C-L-E-Rev-B

D

C

REV. PA1

SHEET 1 OF 1

DOCUMENT NO.

A

U