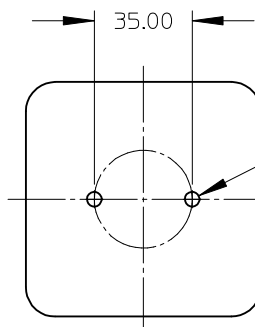
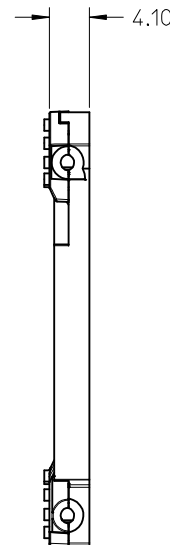
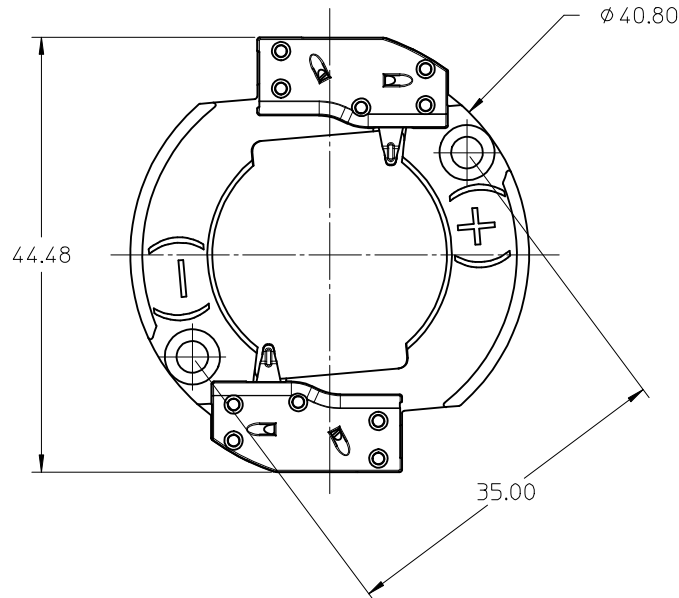
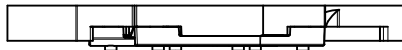


10 9 8 7 6 5 4 3 2 1



M3 OR 4-40 TAPPED HOLES (2)
TORQUE SCREWS 0.8
NEWTON METERS MAX

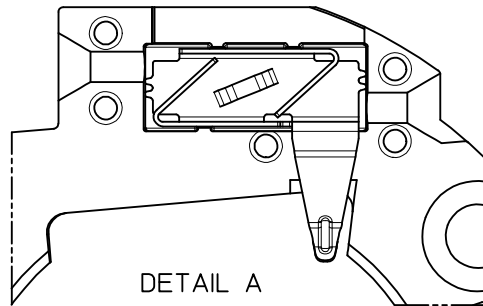
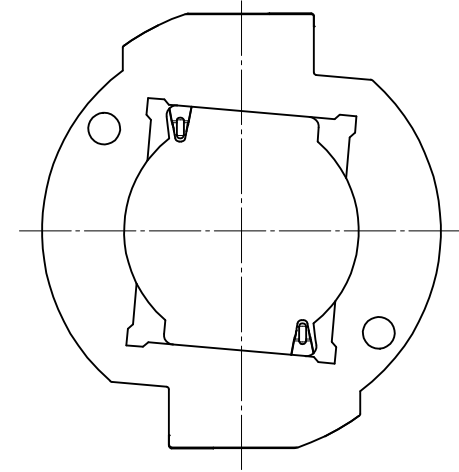
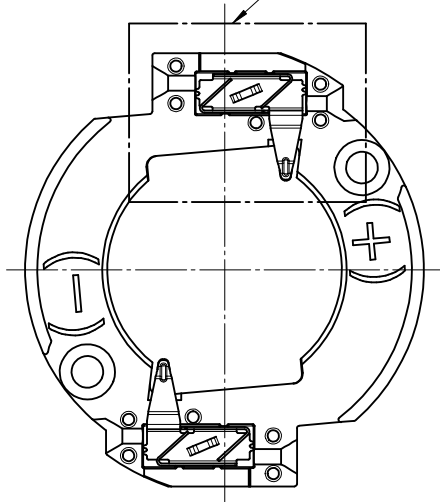
RECOMMENDED MOUNTING DIMENSIONS (NTS)

- 1) MATERIALS:
 - a. CAPS: NATURAL COLOR PA66 NYLON 25% GF UL94V-0
 - b. HOUSING: NATURAL COLOR PA66 NYLON 25% GF UL94V-0
 - 2) WIRE TRAP TERMINALS: COPPER ALLOY
 - a. FINISH: GOLD OVER NICKEL
 - 3) THIS PRODUCT IS ELV AND ROHS COMPLIANT
 - 4) APPLICABLE WIRE GAUGE - 18 OR 20 AWG
 - a. SOLID WIRE IS RECOMMENDED
 - b. IF STRANDED WIRE IS USED, PRE-TINNED IS RECOMMENDED
 - c. 1 cm STRIP LENGTH IS RECOMMENDED
 - 5) MOUNT HOLDER USING M3 OR 4-40 SCREWS (2), 0.8 NEWTON METERS MAX TORQUE
 - 6) UL RECOGNITION TO UL496 - PENDING
 - c-UL RECOGNITION TO CSA-C22.2 NO. 43 (2008) - PENDING
- UL FILE NUMBER: PENDING

ENTER DESCRIPTION EC NO: SSL2013-0018 DRAWN: CARRANZA 2012/08/22 CHKD: APPR: DMCGOWAN 2012/08/23 REV		DESCRIPTION	QUALITY SYMBOLS <div>FA=0</div> <div>FE=0</div> <div>FF=0</div>	GENERAL TOLERANCES (UNLESS SPECIFIED)		DIMENSION STYLE MM ONLY		SCALE 2:1	DESIGN UNITS METRIC	THIRD ANGLE PROJECTION <div></div>						
					mm	INCH	DRAWN BY MDEVITO	DATE 2012/02/03	TITLE SHARP MEGA ZENIGATA							
				4 PLACES	± ---	± ---	CHECKED BY	DATE								
				3 PLACES	± ---	± ---	APPROVED BY DMCGOWAN					DATE 2012/02/07				
				2 PLACES	± 0.13	± ---										
				1 PLACE	± 0.25	± ---	MATERIAL NO. 1803300002					DOCUMENT NO. SD-180330-002				
ANGULAR ±1/2°																
DRAFT WHERE APPLICABLE MUST REMAIN WITHIN DIMENSIONS			SIZE B		THIS DRAWING CONTAINS INFORMATION THAT IS PROPRIETARY TO MOLEX INCORPORATED AND SHOULD NOT BE USED WITHOUT WRITTEN PERMISSION											

WIRE TRAP CAPS ARE REMOVED FROM FRONT VIEW FOR CLARITY


SEE DETAIL A



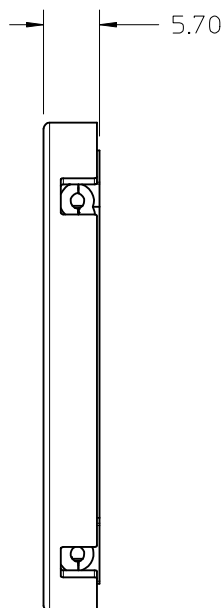
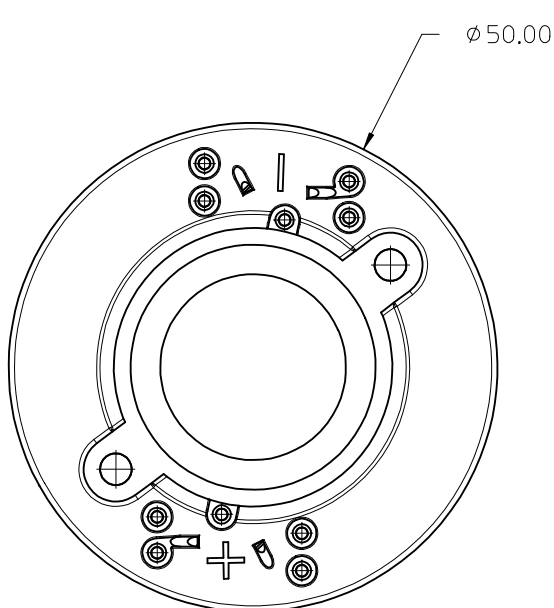
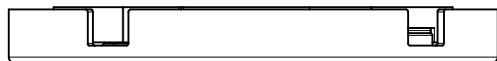
DETAIL A
Scale 4:1

VIEW OF TWO-WAY WIRE TRAP

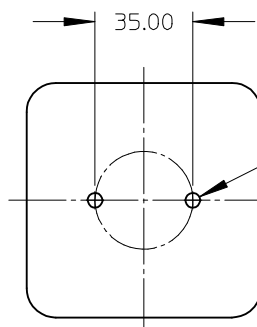
WIRE TRAPS WILL ACCOMODATE
EITHER 18 OR 20 GAUGE WIRE

ENTER DESCRIPTION EC NO: SSL2013-0018 DRAWN: CARRANZA 2012/08/22 CHKD: DMCGOWAN APPR: DMCGOWAN 2012/08/23	DESCRIPTION	QUALITY SYMBOLS $\nabla = 0$ $\nabla = 0$ $\nabla = 0$	GENERAL TOLERANCES (UNLESS SPECIFIED)		DIMENSION STYLE MM ONLY		SCALE 2:1	DESIGN UNITS METRIC	THIRD ANGLE PROJECTION 						
				mm	INCH	DRAWN BY MDEVITO	DATE 2012/02/03	TITLE SHARP MEGA ZENIGATA							
			4 PLACES	± ---	± ---	CHECKED BY	DATE								
			3 PLACES	± ---	± ---	APPROVED BY DMCGOWAN					DATE 2012/02/07				
			2 PLACES	± 0.13	± ---										
			1 PLACE	± 0.25	± ---	MOLEX INCORPORATED									
			ANGULAR ±1/2°												
DRAFT WHERE APPLICABLE MUST REMAIN WITHIN DIMENSIONS			MATERIAL NO. 1803300002		DOCUMENT NO. SD-180330-002					SHEET NO. 2 OF 2					
B	REV				SIZE B	THIS DRAWING CONTAINS INFORMATION THAT IS PROPRIETARY TO MOLEX INCORPORATED AND SHOULD NOT BE USED WITHOUT WRITTEN PERMISSION									

10 9 8 7 6 5 4 3 2 1





- 1) MATERIALS:
 - a. COVER: NATURAL COLOR PBT 30% GF UL94V-0
 - b. HOUSING: NATURAL COLOR PA66 NYLON 25% GF UL94V-0
 - 2) WIRE TRAP TERMINALS: COPPER ALLOY
 - a. FINISH: GOLD OVER NICKEL
 - 3) THIS PRODUCT IS ELV AND ROHS COMPLIANT
 - 4) APPLICABLE WIRE GAUGE - 18 OR 20 AWG
 - a. SOLID WIRE IS RECOMMENDED
 - b. IF STRANDED WIRE IS USED, PRE-TINNED IS RECOMMENDED
 - c. 1 cm STRIP LENGTH IS RECOMMENDED
 - 5) MOUNT HOLDER USING M3 SCREWS (2), 0.8 NEWTON METERS MAX TORQUE
 - 6) UL RECOGNITION TO UL496 - PENDING
 - c-UL RECOGNITION TO CSA-C22.2 NO. 43 (2008) - PENDING
- RATED 600V
UL FILE NUMBER: PENDING



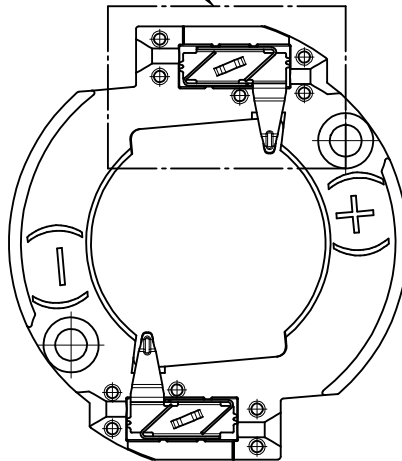
M3 OR 4-40 TAPPED
HOLES (2)
TORQUE SCREWS 0.8
NEWTON METERS MAX

RECOMMENDED MOUNTING DIMENSIONS (NTS)

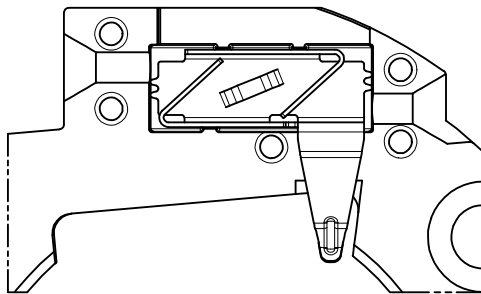
ENTER DESCRIPTION EC NO: SSL2013-0018 DRAWN: CARRANZA 2012/08/22 CHKD: APPR: DMCGOWAN 2012/08/23		DESCRIPTION	QUALITY SYMBOLS F _A =0 F _F =0 F _P =0	GENERAL TOLERANCES (UNLESS SPECIFIED)		DIMENSION STYLE MM ONLY		SCALE 2:1	DESIGN UNITS METRIC	THIRD ANGLE PROJECTION 		
					mm	INCH	DRAWN BY MDEVITO	DATE 2012/02/10	TITLE MEGA ZENIGATA ZHAGA LED HOLDER			
							CHECKED BY	DATE				
							APPROVED BY DMCGOWAN	DATE 2012/04/26	 MOLEX INCORPORATED			
							MATERIAL NO. 1803300003	DOCUMENT NO. SD-180330-003				
B		REV		DRAFT WHERE APPLICABLE MUST REMAIN WITHIN DIMENSIONS		SIZE B	THIS DRAWING CONTAINS INFORMATION THAT IS PROPRIETARY TO MOLEX INCORPORATED AND SHOULD NOT BE USED WITHOUT WRITTEN PERMISSION					

10 9 8 7 6 5 4 3 2 1

SEE DETAIL A





COVER REMOVED FROM FRONT VIEW FOR CLARITY



DETAIL A
Scale 4:1

VIEW OF TWO-WAY WIRE TRAP

WIRE TRAPS WILL ACCOMODATE
EITHER 18 OR 20 GAUGE WIRE

ENTER DESCRIPTION EC NO: SSL2013-0018 DRAWN: CARRANZA 2012/08/22 CHKD: APPR: DMCGOWAN 2012/08/23 REV	QUALITY SYMBOLS F=0 F=0 F=0	DESCRIPTION	GENERAL TOLERANCES (UNLESS SPECIFIED)		DIMENSION STYLE MM ONLY		SCALE 2:1	DESIGN UNITS METRIC	 THIRD ANGLE PROJECTION	
				mm	INCH	DRAWN BY MDEVITO	DATE 2012/02/10	TITLE MEGA ZENIGATA ZHAGA LED HOLDER		
			4 PLACES	± ---	± ---	CHECKED BY	DATE			
			3 PLACES	± ---	± ---					
			2 PLACES	± 0.13	± ---			APPROVED BY DMCGOWAN 2012/04/26  MOLEX INCORPORATED		
			1 PLACE	± 0.25	± ---					
			ANGULAR ±1/2°							
			DRAFT WHERE APPLICABLE MUST REMAIN WITHIN DIMENSIONS		MATERIAL NO. 1803300003		DOCUMENT NO. SD-180330-003	SHEET NO. 2 OF 2		
					SIZE B	THIS DRAWING CONTAINS INFORMATION THAT IS PROPRIETARY TO MOLEX INCORPORATED AND SHOULD NOT BE USED WITHOUT WRITTEN PERMISSION				