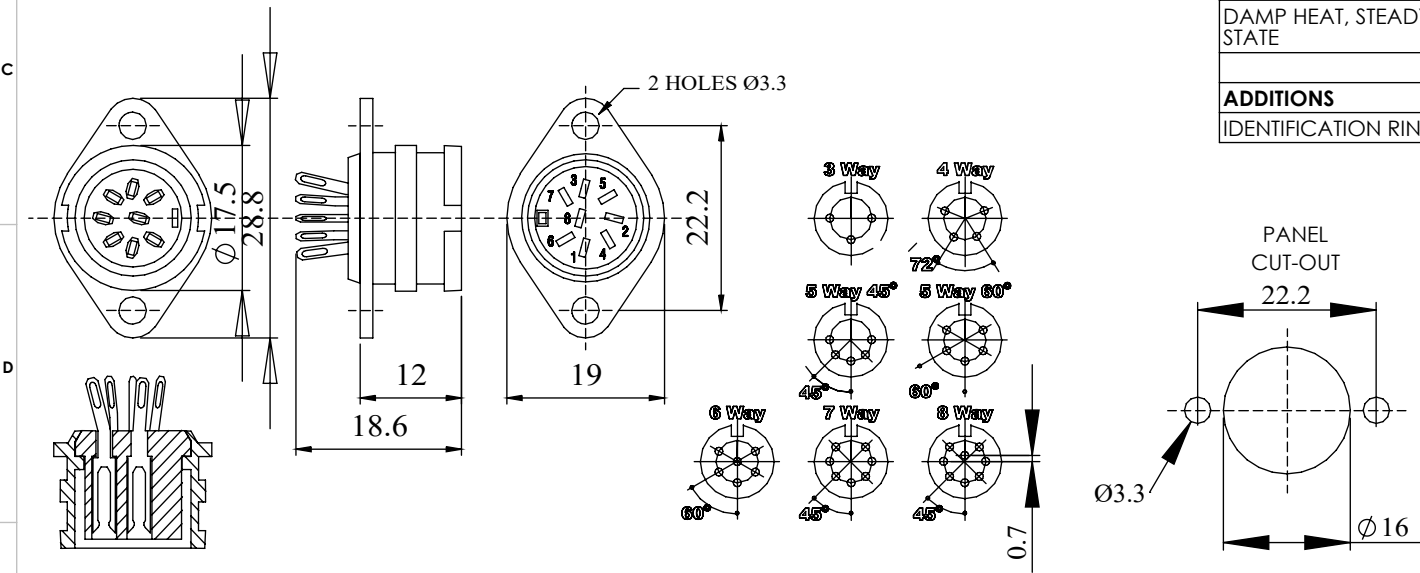


A RANGE OF PROFESSIONAL CHASSIS MOUNTING DIN SOCKETS
FOR SPECIFIC USE WITH RING LOCK DIN CONNECTOR (592 SERIES).
DESIGNED FOR PANEL MOUNTING VIA TWO FLANGES
(FOR USE WITH M3 SCREW NOT SUPPLIED). WITH A QUICK AND SIMPLE
QUARTER TURN OF THE LOCKING RING TO SECURE THE PLUG IN PLACE
CAN ALSO BE COLOUR CODED VIA AND INTERCHANGEABLE COLOUR RING
AVAILABLE IN SIX COLOURS

MANUFACTURED TO DIN 41524, 45322, 45326, 45327 AND 45329

DIMENSIONS



| | |
|-------------------------|---|
| MATERIAL | |
| HOUSING | MAZAK |
| HOUSING FINISH | BRIGHT NICKEL PLATING |
| MOULDING | LEXAN 500R |
| CONTACT PIN | BRASS |
| CONTACT PIN FINISH | SILVER 3 MICRONS ON COPPER 1.5 MICRONS & ANTI-TARNISH |
| EARTH TAG | PHOSPHER BRONZE |
| EARTH TAG FINISH | SILVER 3 MICRONS ON COPPER 1.5 MICRONS & ANTI-TARNISH |
| ELECTRICAL | |
| RATED VOLTAGE | 34 V AC OR DC |
| CURRENT RATING | 2 Amps |
| TEST VOLTAGE | 500 V r.m.s |
| INSULATION RESISTANCE | 103 MΩ MIN AT 100 V DC |
| CONTACT RESISTANCE | 10 mΩ MAX |
| CAPACITANCE (MATED) | 3pF |
| CLIMATIC | |
| CLIMATIC CATEGORY | 25/070/21 |
| TEMPERATURE RANGE | -25°C TO + 70°C |
| DAMP HEAT, STEADY STATE | 21 DAYS |
| ADDITIONS | |
| IDENTIFICATION RING | ACETAL (REFER TO BELOW TABLE FOR PART NUMBERS) |

| IDENTIFICATION RING | |
|----------------------------------|-------------|
| COLOUR | PART NUMBER |
| BLUE | 593-0002 |
| GREEN | 593-0004 |
| RED | 593-0005 |
| WHITE | 593-0006 |
| YELLOW | 593-0007 |
| MIXED(BAG 20 X 4 OF EACH COLOUR) | 593-0000 |

| TYPE | PART NUMBER |
|-----------|-------------|
| 3 WAY | 593-0300 |
| 4 WAY | 593-0400 |
| 5 WAY 45° | 593-0500 |
| 5 WAY 60° | 593-0510 |
| 6 WAY | 593-0600 |
| 7 WAY | 593-0700 |
| 8 WAY | 593-0800 |