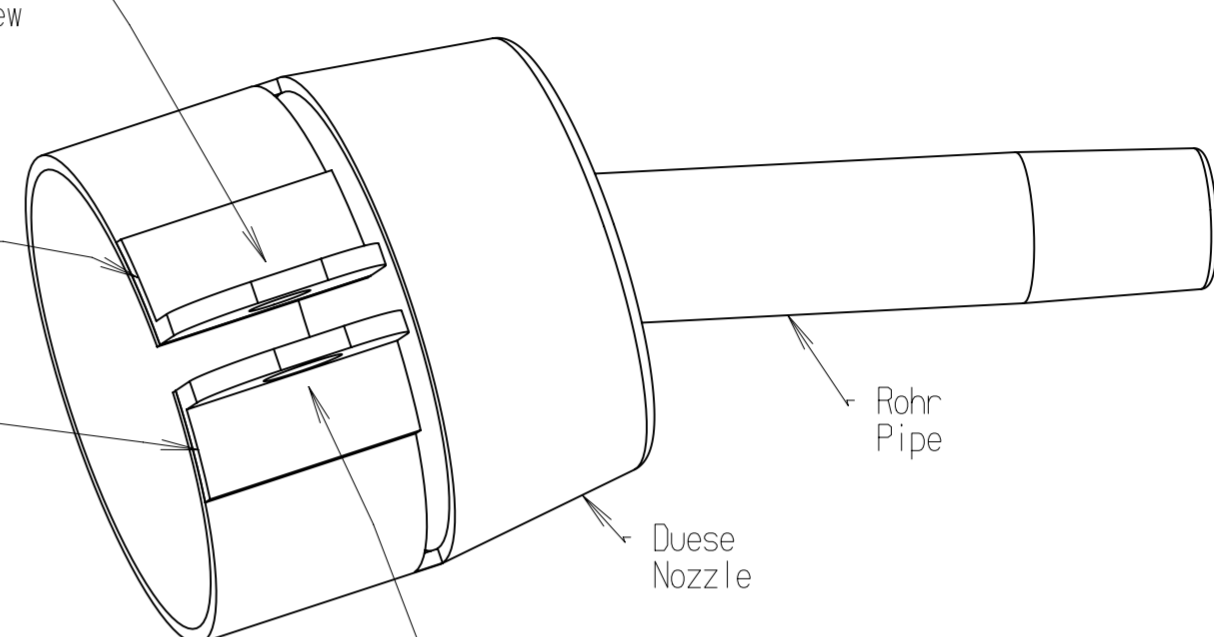
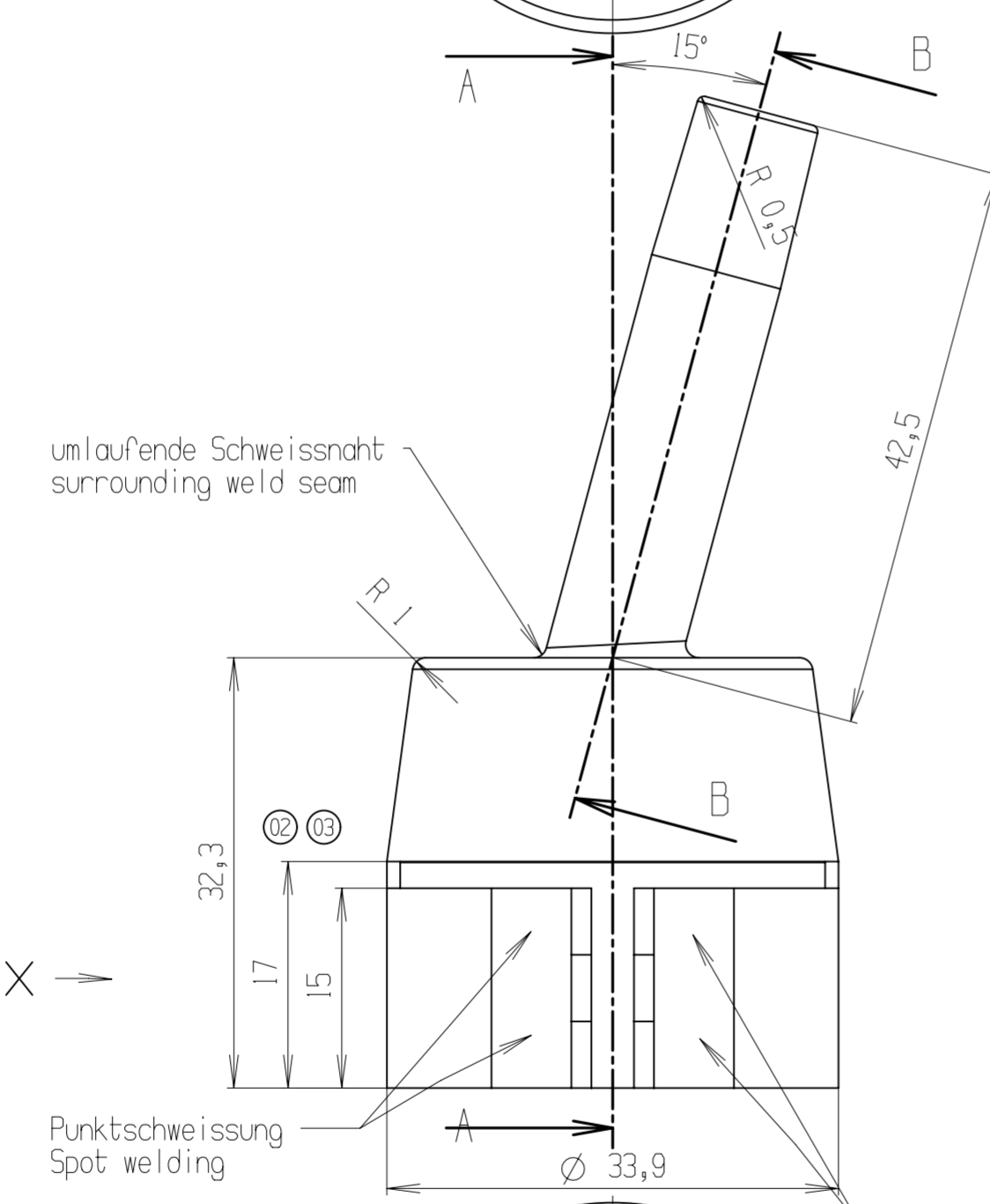
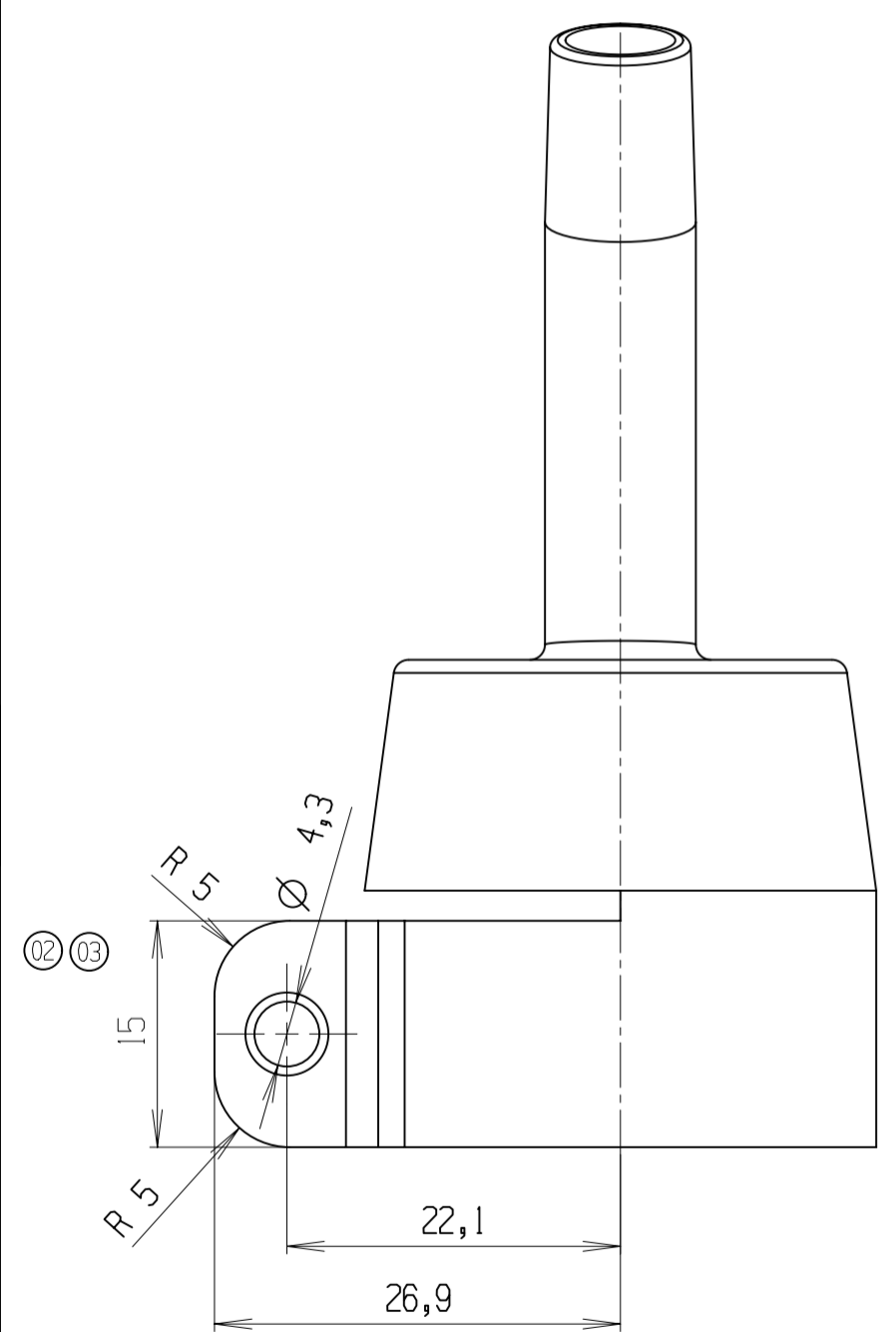


① ② KOMBI Zylinderschraube
 ähnlich DIN 84 SZ+ H2
 M4x12
 Edelstahl
 COMBI cylinder head screw
 similar DIN 84 SZ+H2
 M4x12
 Stainless steel

Winkelstueck 1
 Elbow 1
 Winkelstueck 2
 Elbow 2



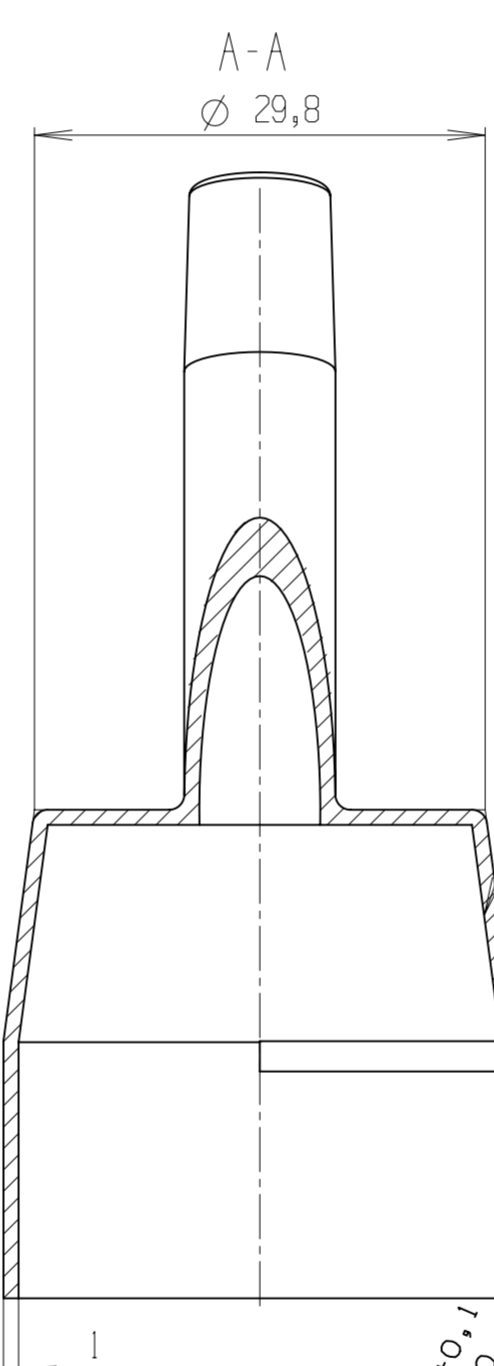
Rohr
 Pipe
 Duese
 Nozzle
 Einnietmutter M4 0,5-1,6
 Messing
 Riveting nut
 Brass



umlaufende Schweissnaht
 surrounding weld seam

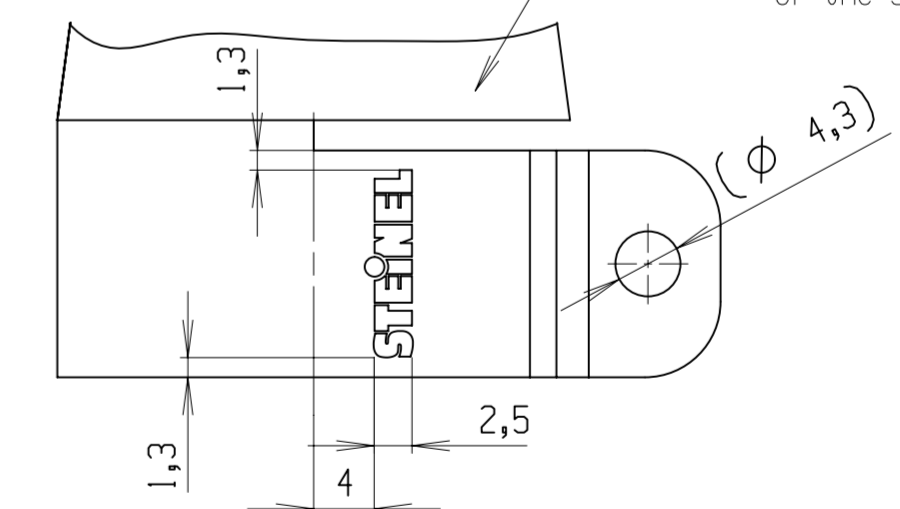
Punktschweissung
 Spot welding

Punktschweissung
 Spot welding



Der Konus muss unbedingt rund sein!
 The cone must be absolutely round!

③ Prägung "STEINEL"
 Embossing "STEINEL"
 Die Prägung muss auf Seite
 der Schraube sein!
 The embossing must be on side
 of the screw!



Material: 1.4541 DIN 59381 III d
 Relevant information of product see released piece list

☐: check gauge, function is belonging to the accuracy of these dimensions
 ⊗: index of modification (Revisionnummer)

General tolerances for nominal dimensions without specified tolerance.		0 ≤ 6	± 0,05	> 6 ≤ 30	± 0,1	> 30 ≤ 90	± 0,15	> 90 < 200	± 0,2	> 200 < 400	± 0,3	Angle	± 1°
Geometry without dimensions to take from 3D-model (general deviation from 3D model = +/- 0,1mm)													
version	modif.No.	description of modification		date	created	proved	released	Date		Name		Description	
03	030703	15mm war 13mm; Prägung hinzu		26.08.2015	Peter	Peter	Otté						
02	030098	13mm war 15mm; war Linsenschr.; Mat. der Mutter geänd.		09.03.2015	Peter	Peter	Kampmann						
01	4128	∅ 5,5 war ∅ 4,3; Schraube, Mutter, ZNG-Nr. und Benennung geändert		10.03.2000	Pr								
All copyrights reserved for this drawing. (DIN 34)													
Scale 2:1													
STEINEL®													
											Volume	xxxxx	
											Drawing number	106397601 / 03	
											Folder:	/projekte/e249	
											cm³		