



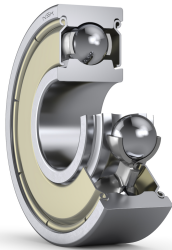
PRODUCT DATASHEET

Datasheet creation date: 2025/05/28 8:32 (UTC)



693ZZ

Extra Small Ball Bearings and Miniature Ball Bearings Metric Series



Boundary Dimensions

d	3	mm	Bore diameter
D	8	mm	Outside diameter
B	4	mm	Width
r1 (min.)	0.15	mm	Chamfer dimension

Basic Load Ratings

Cr	615	N	Basic dynamic load rating
C0r	179	N	Basic static load rating

Speeds

Grease	60000	min-1	Grease lubrication
--------	-------	-------	--------------------

Abutment and Fillet Dimensions

db (max.)	4.3	mm	Diameter of shaft abutment
Db (max.)	7.3	mm	Diameter of housing abutment
rb (max.)	0.15	mm	Radius of shaft or housing fillet

Additional information

z	6		Number of Balls
Dw	1.588	mm	Ball Diameter

Mass

Mass approx.	0.00083	kg	Mass approx.
--------------	---------	----	--------------

