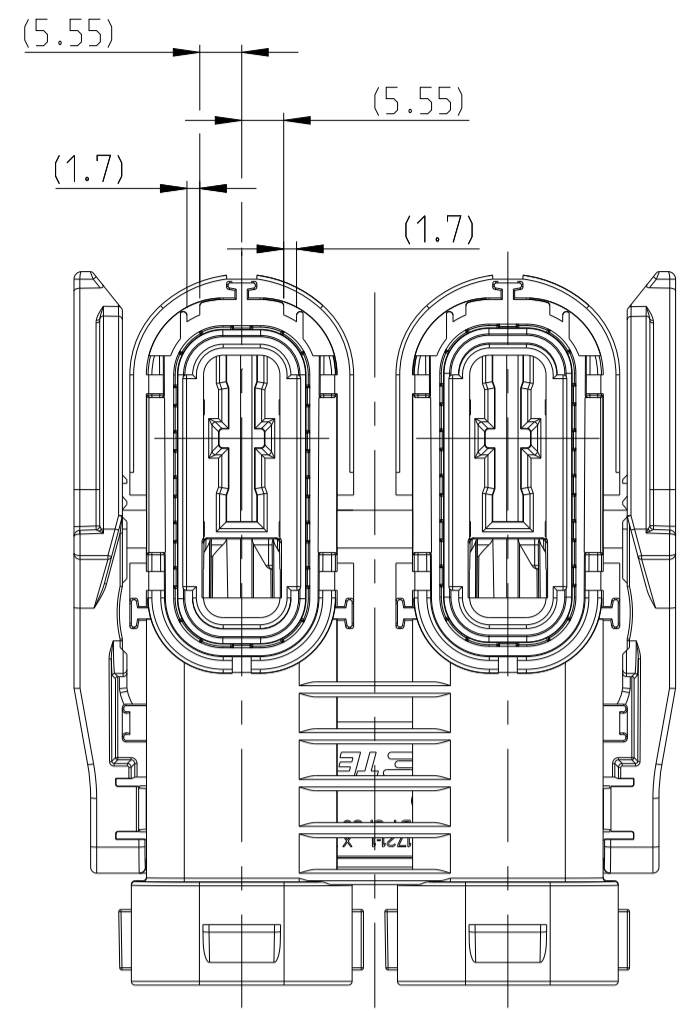
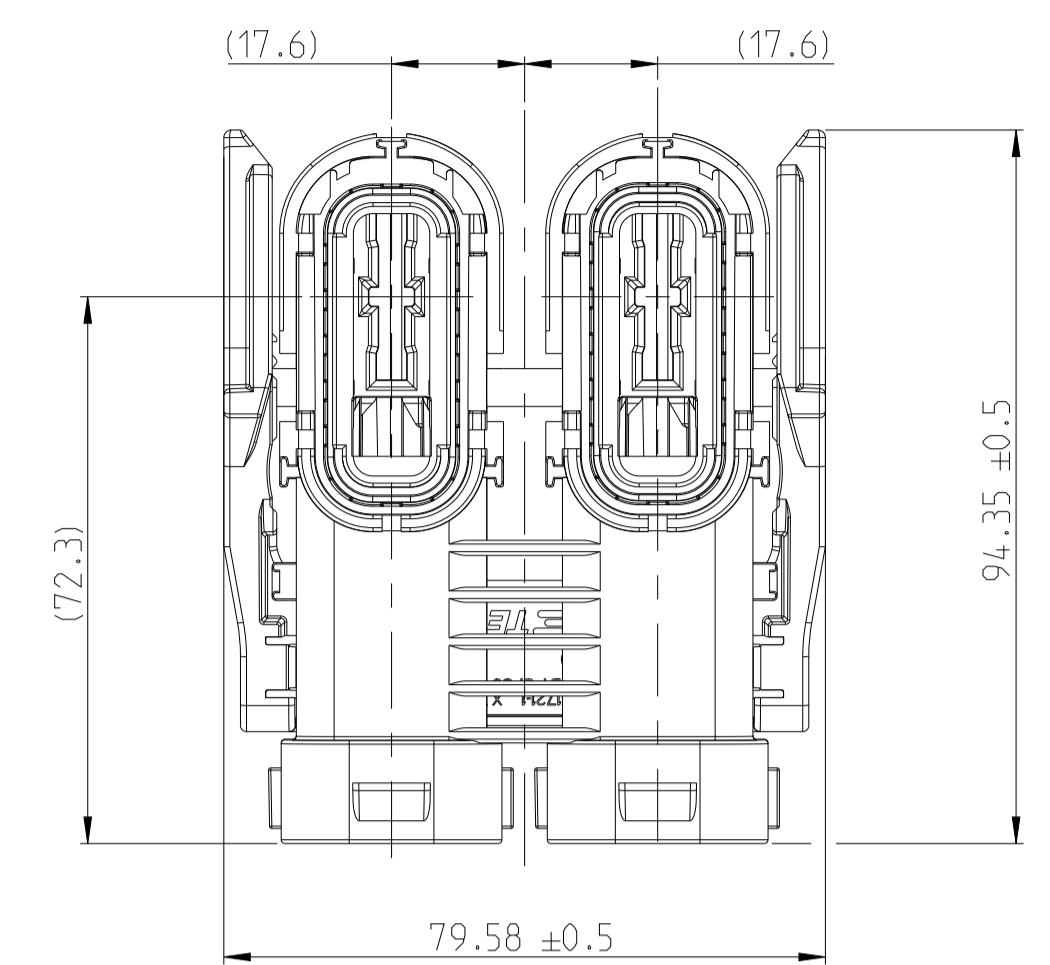
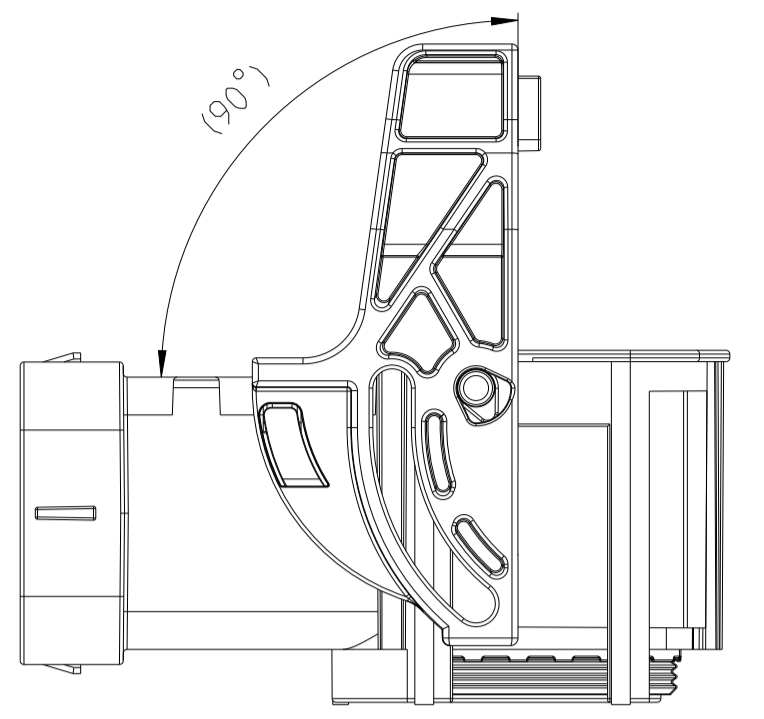


| REVISIONS | | | | | |
|-----------|---------------|----------------------|-----------|-----|------|
| # | LTN | DESCRIPTION | DATE | OWN | APVD |
| D | E-25-238065 | MATERIAL CHANGE SEAL | 18FEB2025 | MF | PW |
| E | ECR-25-259502 | HSG IMPROVEMENT | 16OCT2025 | MF | PW |
| E1 | ECR-25-260031 | TYPO CORR. | 23OCT2025 | MF | PW |
| E2 | ECR-25-264499 | Note Change | 04DEC2025 | MF | PW |

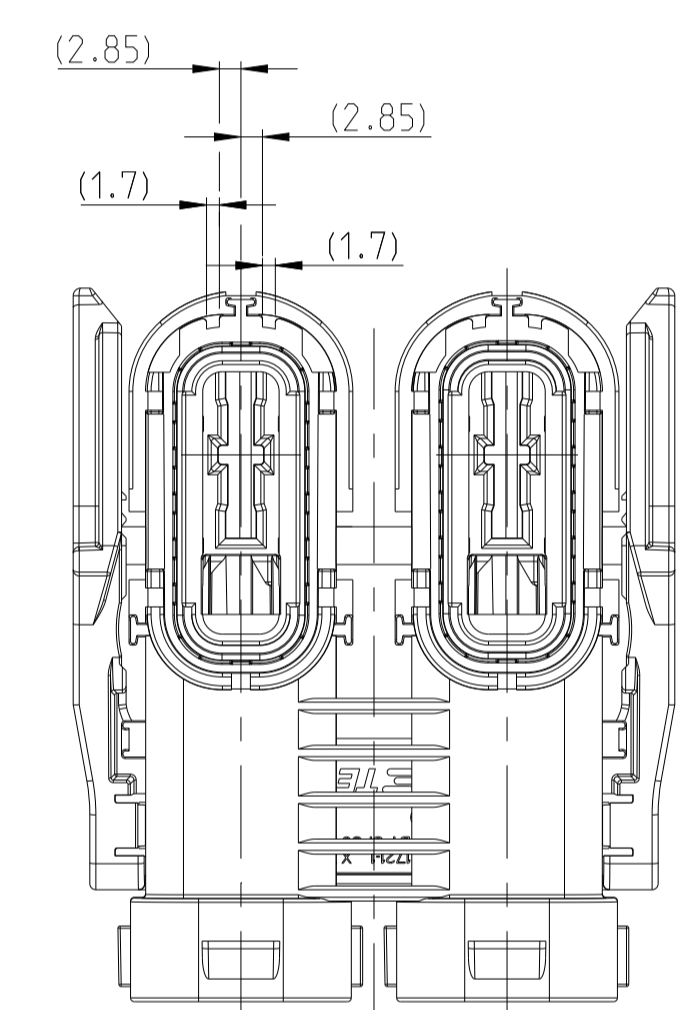
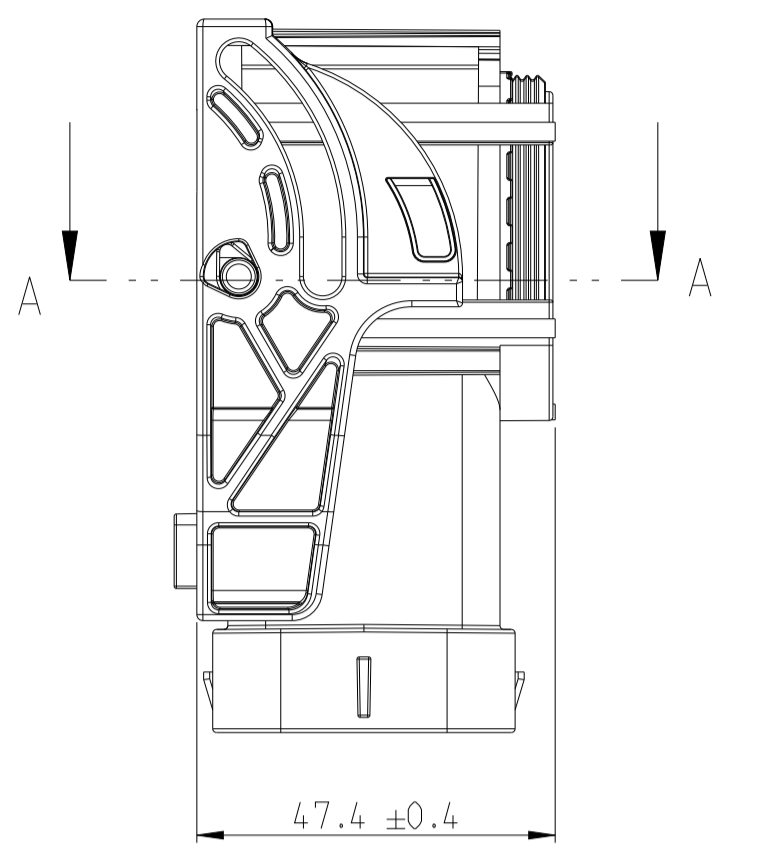


AS SHOWN 2461719-1
CODING A
Kodierung A

PRE-LOCKING POSITION:
Vorraststellung

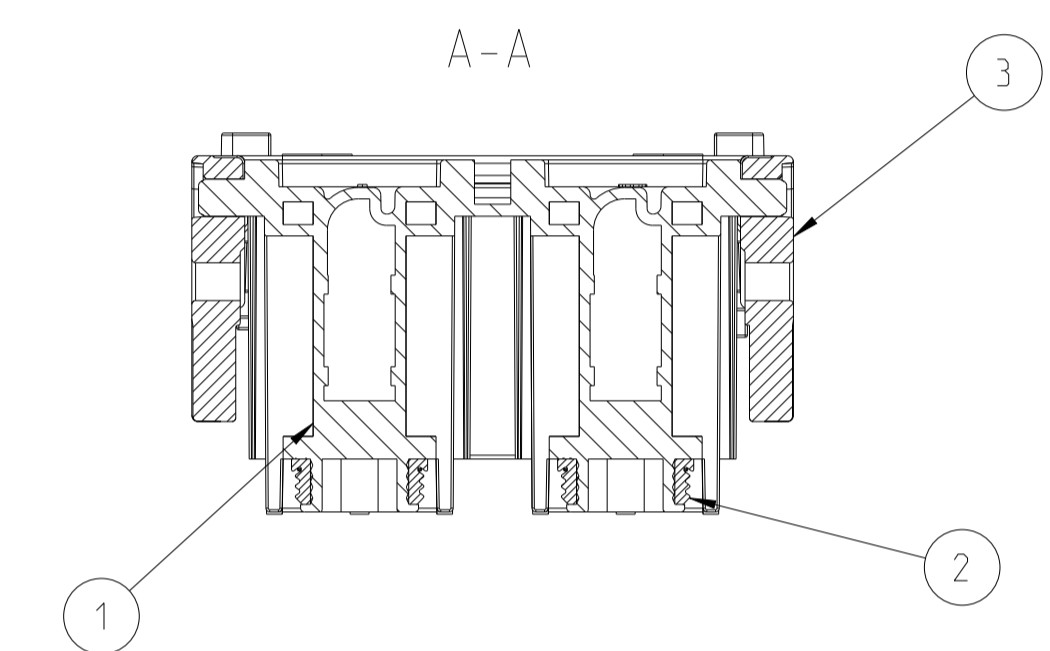
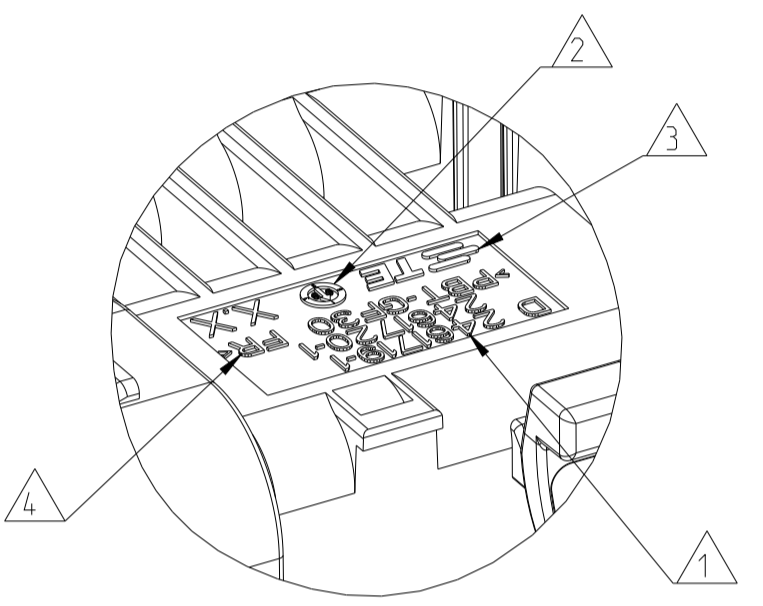


AS SHOWN 2461719-1



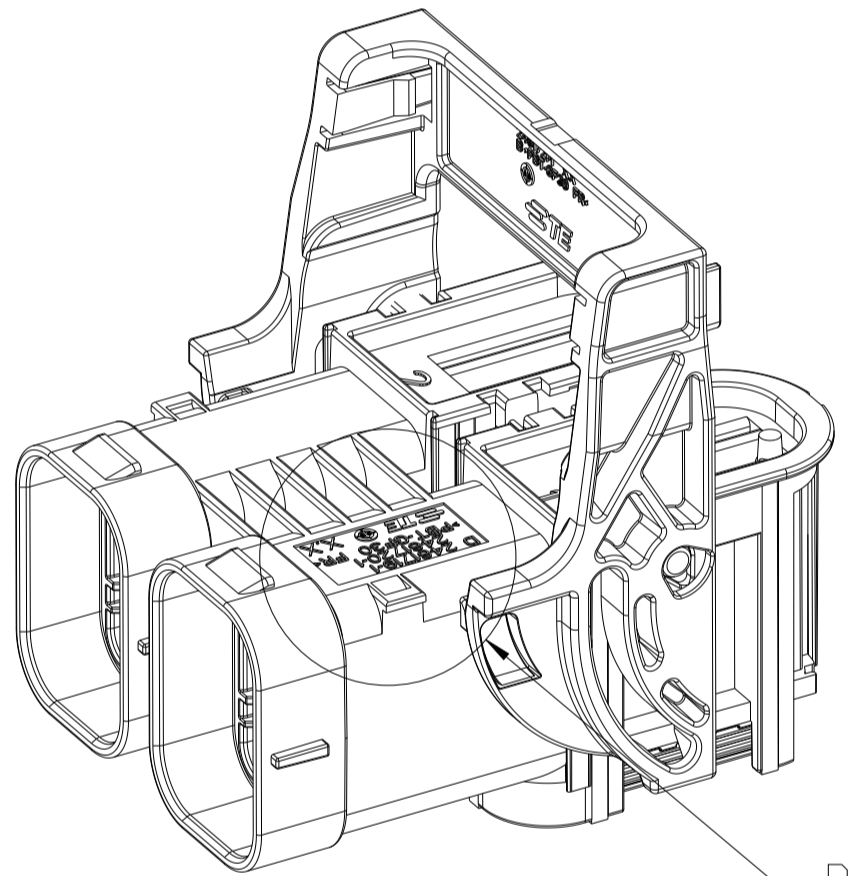
AS SHOWN 2461719-2
CODING B
Kodierung B

DETAIL A
SCALE:2:1

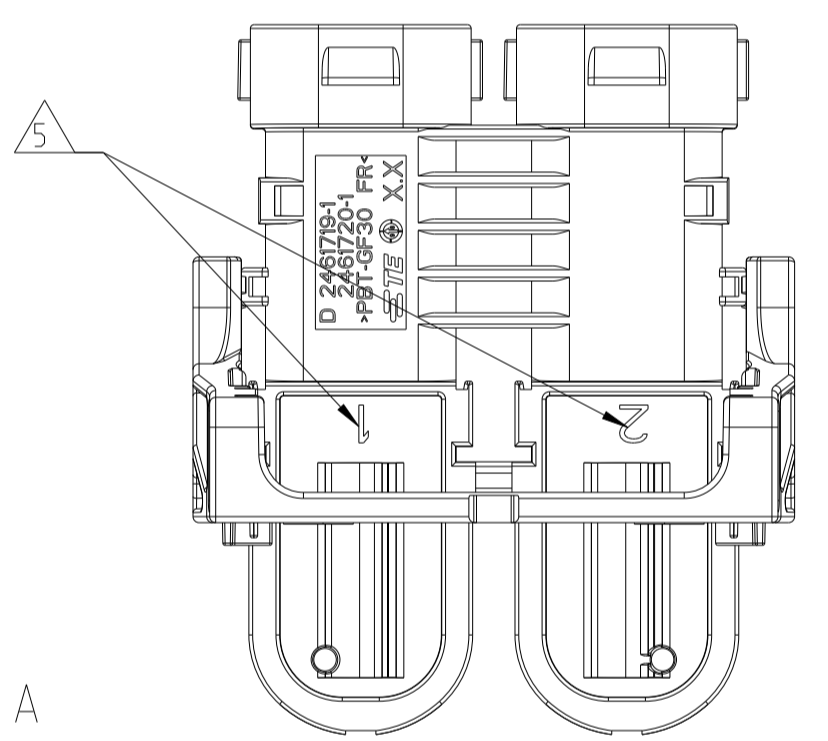


NOTES
Bemerkungen

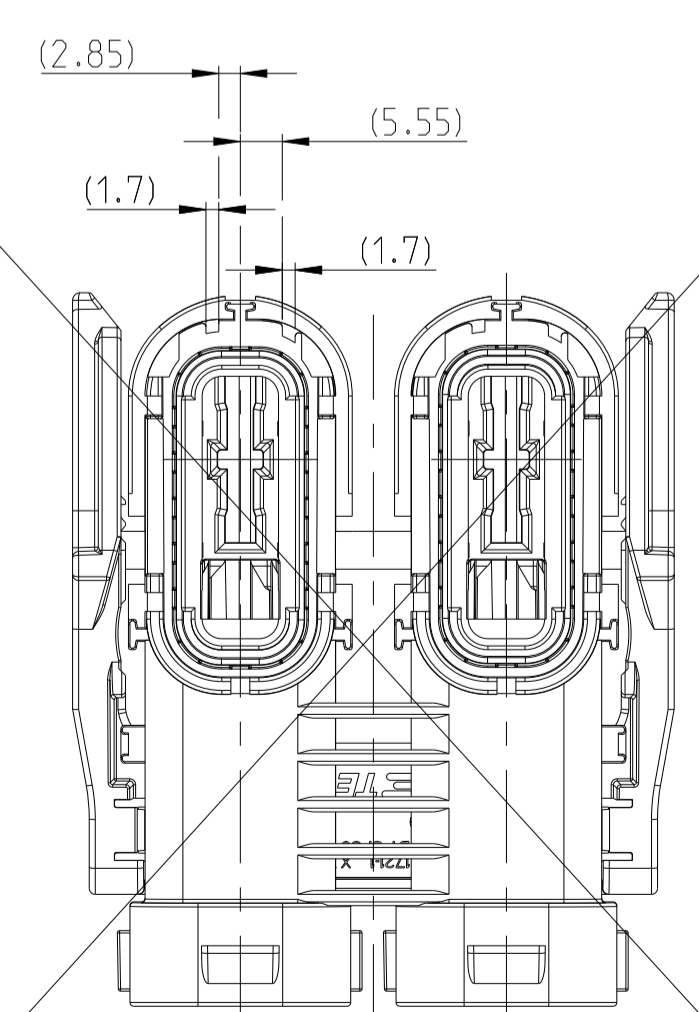
- 1 TE-CONNECTIVITY ORDER-NUMBER
TE-Connectivity Bestellnummer
- 2 PRODUCTION DATE
Produktionsdatum
- 3 TE-LOGO
TE-Logo
- 4 MATERIAL MARKING
Materialkennzeichnung
- 5 CONTACT CAVITY NUMBERING
Kammernumerierung
- 6 DIFFERENT CODINGS
Unterschiedliche Kodierungen
- 7 SUITABLE TO COUNTERPART PN 2461733
Passend zu Gegenstueck PN 2461733
- 8 DELIVERY CONDITION IN CLOSED POSITION
Lieferzustand in geschlossenem Zustand
- 9 MALFUNCTION CAUSED BY LACQUER IS NOT COVERED BY TE WARRANTY.
Funktionsbeeinträchtigung durch Lackieren liegt nicht im Einfluss und Gewährleistungsumfang von TE
- 10 PACKED INTERLAYERED IN CORRUGATED SHIPPING BOX
Verpackt in Lagen angeordnet im Versandkarton
- 11 NECESSARY ACCESSORIES BASED ON CABLE SIZE SEE FOLLOWING CUSTOMER DRAWINGS:
Notwendige Accessoires abhängig von der Kabelgröße, siehe folgende Kundenzeichnungen



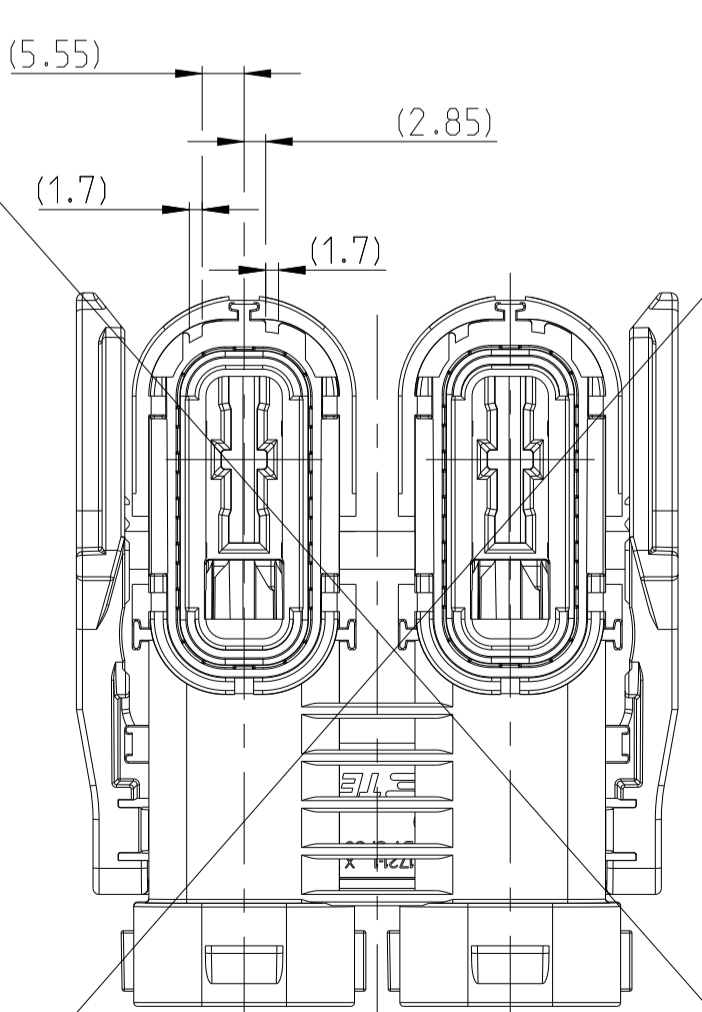
DETAIL A



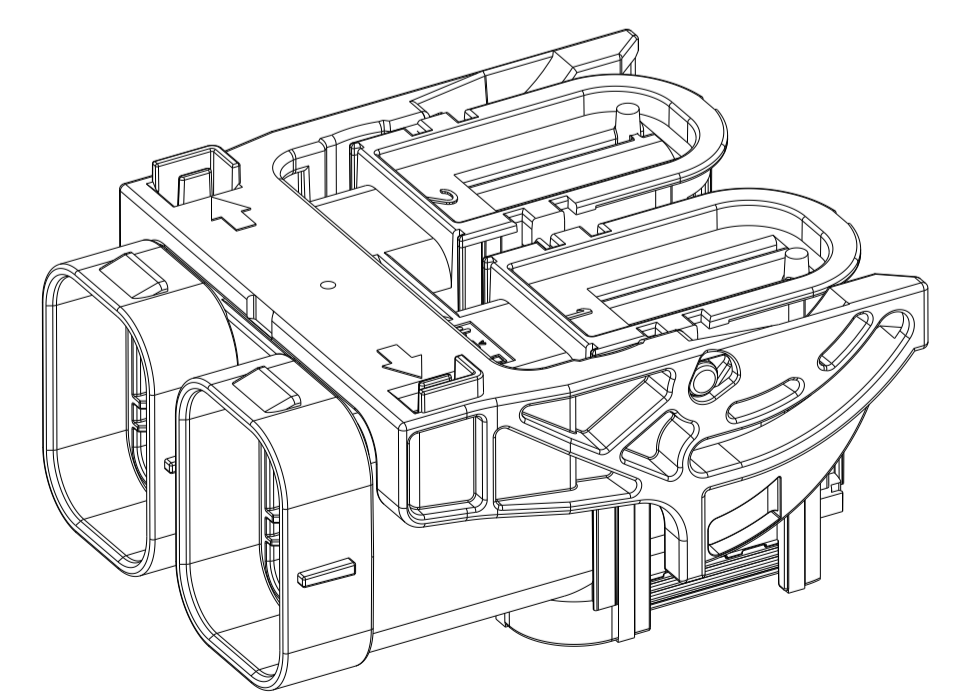
DELIVERY CONDITION:
Lieferzustand



AS SHOWN 2461719-3
CODING C
Kodierung C



AS SHOWN 2461719-4
CODING D
Kodierung D



LEVER IN LOCKED POSITION
Hebel in Verriegelungsstell

DIMENSION AND TOLERANCES ACCORDING TO:
Bemaßungen und Toleranzen gemäß:
DIN ISO 20457
DIN EN ISO 8015
DIN EN ISO 14405-1/-2/-3

| DIMENSIONS: | | TOLERANCES UNLESS OTHERWISE SPECIFIED | |
|-------------|---|---------------------------------------|--|
| mm | | | |
| 0 PLC | + | 0.1 | |
| 1 PLC | + | 0.1 | |
| 2 PLC | + | 0.05 | |
| 3 PLC | + | 0.01 | |
| 4 PLC | + | 0.001 | |
| ANGLES | | | |
| FINISH | | | |

| QTY | RECD | PER ASSY | DESCRIPTION | MATERIAL | COLOR | ITEM NO |
|---|------|----------|--|-------------|-------------------------------|---------|
| 1 | 1 | 1 | LEVER, 2POS, PCON21, REC HSG, 90° Hebel, 2pol., PCON21, Buchsengeh., 90° | PBT-GF30 FR | RED Rot | 3 |
| 2 | 2 | 2 | PERIPHERAL SEAL, PCON21 Radialdichtung, PCON21 | SILICON | YELLOW Gelb | 2 |
| - | - | - | 2POS, PCON21, REC HSG ASSY, SLD, COD D, 90° 2pol., PCON21, Buchsengeh., Assy.ged., Cod D, 90° | PBT-GF30 FR | | 1 |
| - | 1 | - | 2POS, PCON21, REC HSG ASSY, SLD, COD C, 90° 2pol., PCON21, Buchsengeh., Assy.ged., Cod C, 90° | PBT-GF30 FR | | 1 |
| - | - | 1 | 2POS, PCON21, REC HSG ASSY, SLD, COD B, 90° 2pol., PCON21, Buchsengeh., Assy.ged., Cod B, 90° | PBT-GF30 FR | EMERALD GREEN Smaragdgruen | 1 |
| - | - | 1 | 2POS, PCON21, REC HSG ASSY, SLD, COD A, 90° 2pol., PCON21, Buchsengeh., Assy.ged., Cod A, 90° | PBT-GF30 FR | BLACK schwarz | 1 |
| TE ORDER-NO. | | | | | | |
| REVISION OF EACH ASSY NO (WHEN BLANK, USE DWG REVISION) | | | | | | |
| WEIGHT OF EACH ASSY NO [g] | | | | | | |
| QTY RECD PER ASSY | | | | | | |
| PARTS LIST | | | | | | |

THIS DRAWING IS A CONTROLLED DOCUMENT.

OWN: M. Floesser 14DEC2023
CHK: P. Wrobel 14DEC2023
APVD: E. Eltrop 15DEC2023

TE Connectivity

NAME: 2POS, PCON21, REC HSG ASSY, SLD, 90DEG
2pol., PCON21, Buchsengeh., Assy.ged., 90grad

SIZE: A1 CAGE CODE: 00779 DRAWING NO: 2461719

RESTRICTED TO: -

CUSTOMER DRAWING

SCALE: 1:1 SHEET: 1 OF 1 REV: E2