



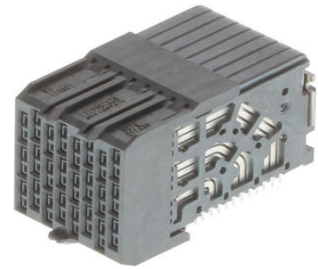
Part Number : [1719901038](#)

Product Description : Impel 90 Ohm 3 Pair Right-Angle Daughtercard, 1.90mm Pitch, Unguided, 8 Columns, 48 Circuits, Plated Through Hole Dimension 0.36mm

Series Number : 171990

Status : Active

Product Category : Backplane Connectors



Documents & Resources

Drawings

[1719901038 sd.pdf](#)

[PK-78888-083-001.pdf](#)

3D Models and Design Files

[STEP AP242](#)

[SOLIDWORKS](#)

[Creo](#)

[SYM-171990-1038-001.zip](#)

[1713402002-000.pdf](#)

[1719900001-000.pdf](#)

[1713402002-000.zip](#)

[1719900001-000.zip](#)

Specifications

[1713209994-AS-000.pdf](#)

[AS-171320-990-001.pdf](#)

[AS-171320-991-001.pdf](#)


[AS-171320-992-001.pdf](#)

[PS-171320-999-001.pdf](#)

Product Environment Compliance

Compliance

GADSL/IMDS	Not Relevant
------------	--------------

China RoHS	per SJ/T 11365-2006 
EU ELV	Not Relevant
Low-Halogen Status	Low-Halogen per IEC 61249-2-21
REACH SVHC	Not Contained per D(2025)4165-DC (25 June 2025)
EU RoHS	Compliant per EU 2015/863

Compliance Statements

- EU RoHS
- REACH SVHC
- Low-Halogen

Industry Documents

- IPC 1752A Class C
- IPC 1752A Class D
- Molex Product Compliance Declaration
- IEC-62474
- chemSHERPA (xml)

Substances of Interest

- PFAS

EU RoHS Certificate of Compliance

Additional Product Compliance Information

Part Details

General

Status	Active
Category	Backplane Connectors
Series	171990
Description	Impel 90 Ohm 3 Pair Right-Angle Daughtercard, 1.90mm Pitch, Unguided, 8 Columns, 48 Circuits, Plated Through Hole Dimension 0.36mm
Application	Coplanar, Daughtercard
Component Type	PCB Receptacle
Product Name	Impel
UPC	887191383712

Agency

UL	E29179
----	--------

Electrical

Current - Maximum per Contact	0.75A
Data Rate	40.0 Gbps
Impedance	90Ω
Shield Type	Full Shield
Voltage - Maximum	29.9V AC (RMS)/DC

Physical

Circuits (Loaded)	48
Circuits (maximum)	48
Color - Resin	Black
Durability (mating cycles max)	200
First Mate / Last Break	No
Guide to Mating Part	No
Keying to Mating Part	None
Material - Metal	High Performance Alloy (HPA)
Material - Plating Mating	Gold
Material - Plating Termination	Nickel, Tin
Material - Resin	High Temperature Thermoplastic
Net Weight	12.500/g
Number of Columns	8
Number of Pairs	3
Number of Rows	6
Orientation	Right Angle
Packaging Type	Tray
PCB Locator	No
PCB Retention	None
PCB Thickness - Recommended	1.00mm
PC Tail Length	1.30mm
Pitch - Mating Interface	1.90mm
Pitch - Termination Interface	1.90mm
Plating min - Mating	0.762μm
Temperature Range - Operating	-55° to +85°C

Solder Process Data

Lead-Free Process Capability	N/A
------------------------------	-----

Mates With / Use With

Mates with Part(s)

Description	Part Number
Impel 90 Ohm, 3 Pair Vertical Backplane Header, 1.90mm Pitch, Unguided, Open Endwalls, 8 Columns, 48 Circuits, Pin Length 5.50mm, Plated Through Hole Dimension 0.46mm	<u>1713351805</u>
Impel 90 Ohm, 3 Pair Vertical Backplane Header, 1.90mm Pitch, Unguided, Open Endwalls, 8 Columns, 48 Circuits, Pin Length 4.90mm, Plated Through Hole Dimension 0.36mm	<u>1713351807</u>
Impel 90 Ohm, 3 Pair Vertical Backplane Header, 1.90mm Pitch, Unguided, Open Endwalls, 8 Columns, 48 Circuits, Pin Length 5.50mm, Plated Through Hole Dimension 0.36mm	<u>1713351808</u>

Application Tooling