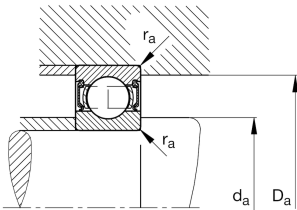
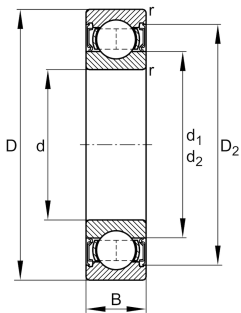


**FAG****6318-2RSR**

Deep groove ball bearing

Deep groove ball bearing 63...2RSR, single row, seals, steel sheet metal cage

## Technical information



## Your current product variant

Sealing	2RSR	Contact seal on both sides
Cage	JN	Steel sheet metal
Tolerance class	PN	Normal (PN)
Dimensional / heat stabilization	S0	Rings dimensional stabilized up to 150°
Lubricant	GA13	Ball bearing and insert bearing grease, standard for D>62mm
Radial internal clearance	CN (Group N)	Normal internal clearance
Bore type	Z	Cylindrical

## Main Dimensions &amp; Performance Data

d	90 mm	Bore diameter
D	190 mm	Outside diameter
B	43 mm	Width
C <sub>r</sub>	142,000 N	Basic dynamic load rating, radial
C <sub>0r</sub>	102,000 N	Basic static load rating, radial
C <sub>ur</sub>	5,900 N	Fatigue load limit, radial
n <sub>G</sub>	2,170 1/min	Limiting speed
≈m	5.5 kg	Weight

## Mounting dimensions

d <sub>a min</sub>	104 mm	Minimum diameter shaft shoulder
D <sub>a max</sub>	176 mm	Maximum diameter of housing shoulder
r <sub>a max</sub>	2.5 mm	Maximum fillet radius



Dimensions

r <sub>min</sub>	3 mm	Minimum chamfer dimension
D <sub>1</sub>	157.18 mm	Shoulder diameter outer ring
D <sub>2</sub>	160.74 mm	Caliber diameter outer ring
d <sub>1</sub>	123.3 mm	Shoulder diameter inner ring

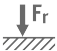
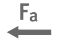




Temperature range

T <sub>min</sub>	-20 °C	Operating temperature min.
T <sub>max</sub>	100 °C	Operating temperature max.

Calculation factors

f <sub>0</sub>	13.9	Calculation factor
----------------	------	--------------------

Characteristics

-  Radial load
-  Axial load in one direction
-  Axial load in two directions
-  Lifetime lubrication, freedom from maintenance
-  Grease Lubrication
-  Sealed on both sides