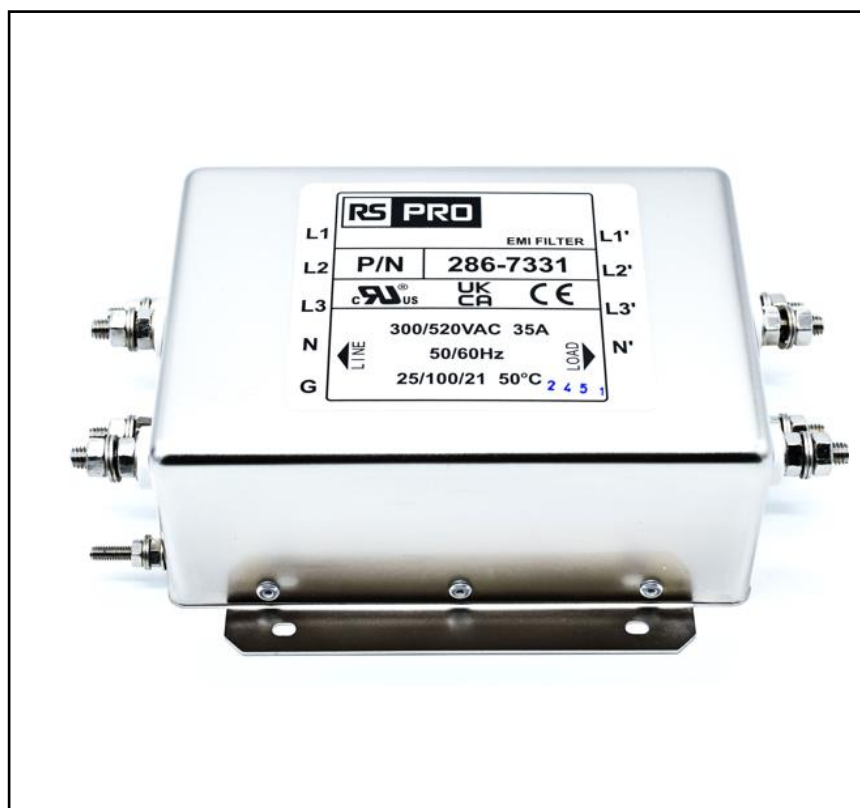


Features

- Rated currents up to 35A
- Screw terminal
- The compact size can be applied to various situations.
- General purpose filtering performance

RS PRO EMI Filters

RS Stock No.:286-7331



RS PRO is the own brand of RS. The RS PRO Seal of Approval is your assurance of professional quality, a guarantee that every part is rigorously tested, inspected, and audited against demanding standards. Making RS PRO the Smart Choice for our customers.

Product Description

High performance Three phase chassis mount EMI filter Applications:

- *Electrical and electronic equipment*
- *Medical equipment*
- *Office automation equipment*
- *New energy equipment ,Communication equipment;*

General Specifications

The compact size can be applied to various situations.

This filter is also available as one-stage filters in noisy environment.

Electrical Specifications

*Size(Length*Width*Height) 150*105*60mm*

Weight 1.85kgs

Mounting Hole Spacing 120mm*90mm

Mechanical Specifications

Rated Voltage Max. 300/520VAC

<i>Rated currents</i>	35A
<i>Operating frequency</i>	50/60Hz
<i>Hipot Rating</i>	Line to Ground 2750vdc; Line to Line 2250Vdc; Line to Neutral 1300vdc
<i>Temperature range</i>	-25°C~+100°C
<i>Leakage current</i>	1.8mA/2.7mA
<i>Inductance</i>	L: 4×1.0mH ;
<i>Capacitance</i>	Cx: 1.0uF*6 ; Cy:6800pF*2
<i>Resistance</i>	R: 680K ohm*3 ;

Protection Category

IP Rating IP40

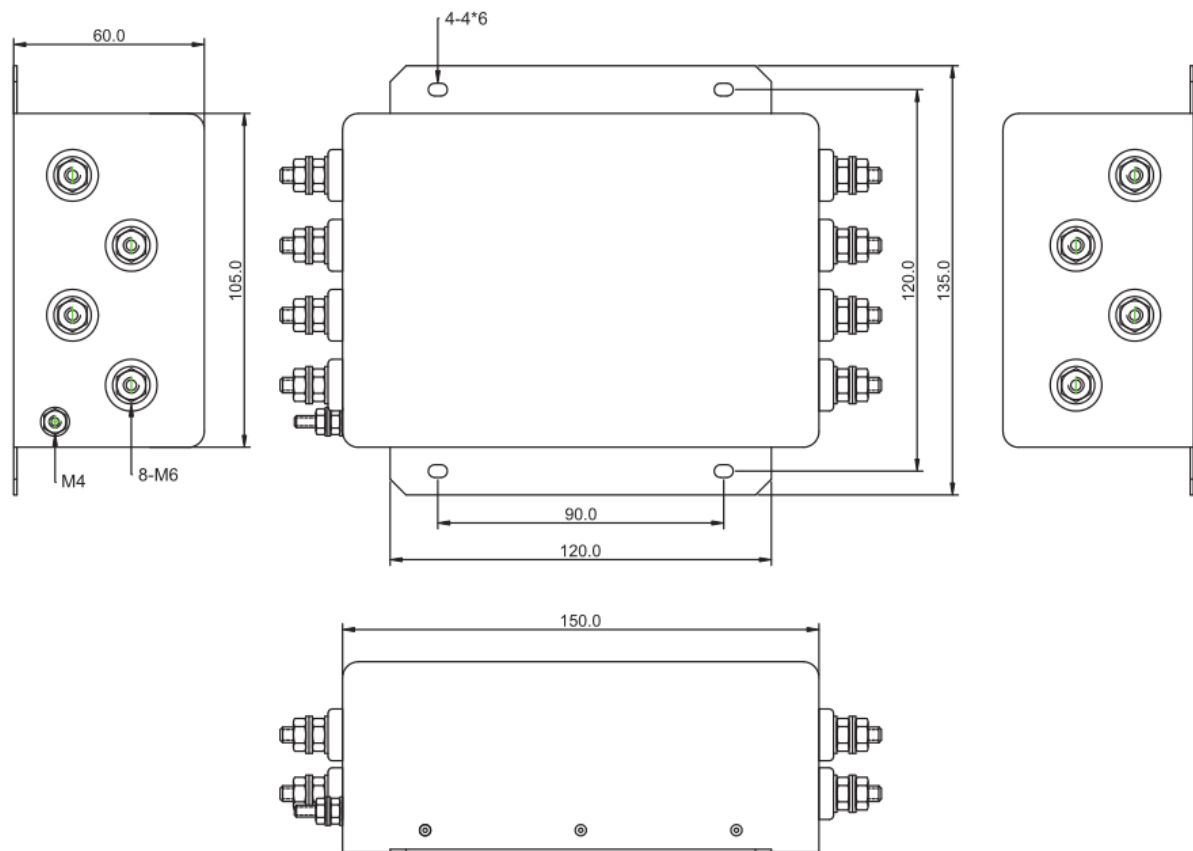
Approvals

<i>Declarations</i>	UL CE UKCA REACH ROHS
<i>Safety Standard</i>	UL/EN 60939, UL1283; CSA C22.2 No.8;

Similar Products

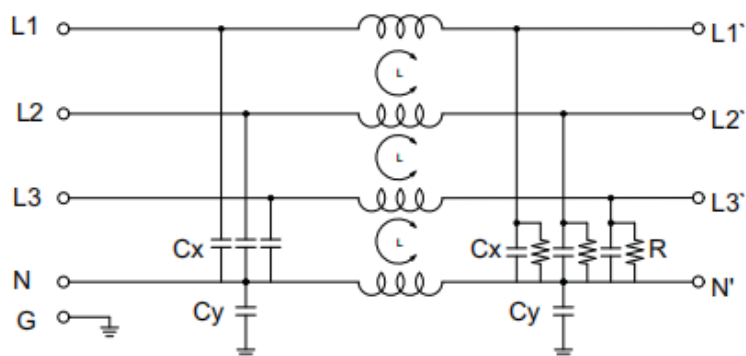
Stock No.	Brand	Phase Type	Mounting	Current	Dimension
237-8774	RS PRO	Three phase	Chassis mounting	36A	150*105*60mm
286-7332	RS PRO	Three phase	Chassis mounting	36A	150*105*60mm

Physical Dimensions (Unit: mm)



0 ~ 10	±0.3
10 ~ 100	±0.5
100 ~ 150	±0.8
150 ~ 200	±1.0

Electrical Schematic



Insertion loss(IN 50ohm system according IEC/CISPR NO.17)

