

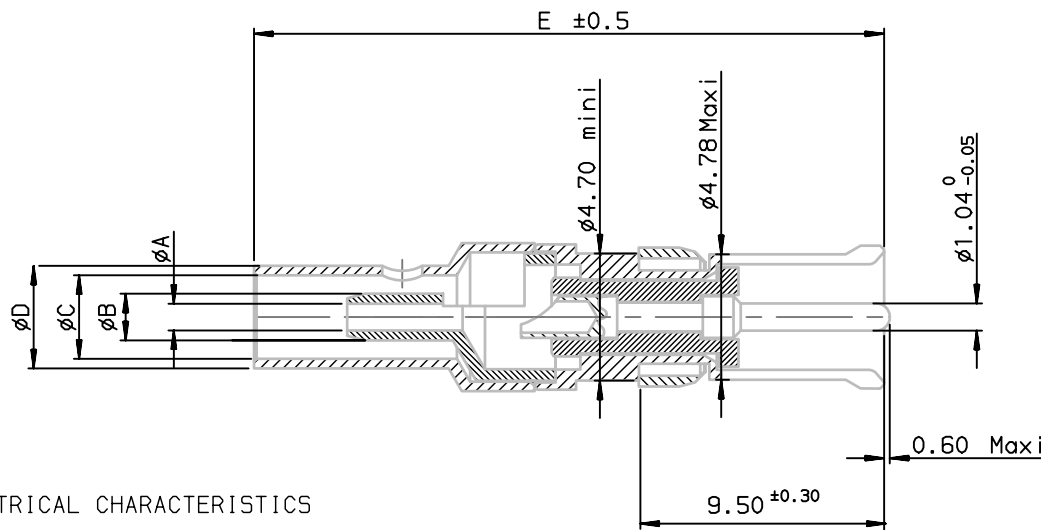
1

2

3

4

DM537425000NCLF	Ct coax femelle sortie droite	1.00	1.75	2.32	3.20	22.30	RG178BU
DM537425002NCLF	Ct coax femelle sortie droite	2.75	4.00	5.09	5.95	26.80	RG180BU
DM537425004NCLF	Ct coax femelle sortie droite	3.15	4.00	5.09	5.95	26.80	RG 58CU
DM537425006NCLF	Ct coax femelle sortie droite	0.98	1.77	2.30	3.22	24.10	RG 178BU
DM537425001NCLF	Ct coax femelle sortie droite	1.70	2.46	3.13	3.84	24.10	RG 316U
Ref contact	Designation	$\phi A^{+0.10}_0$	$\phi B^{\pm 0.05}$	$\phi C^{+0.10}_0$	$\phi D^{\pm 0.10}$	E	Ref cable



NOTE: RoHS INFORMATIONS

- The "LF" product meets European union Directives and other country regulations as described in 65-22-008.
- The product is not intended to be exposed to a manufacturing solder process.
- Packaging spec: see 65-14-920.

Part number	SEE TABLE
-------------	-----------

ELECTRICAL CHARACTERISTICS

- Impedance: 500HMS
- Working frequency: 1GHz max
- Dielectric with standing voltage: 600V
- Insulation resistance 5000: 14 OHMS
- Contact resistance ≤ 5 m OHMS
- Insertion Lost: ≤ 0.2 dB

MECHANICAL CHARACTERISTICS

- Mating force per set of contact 0.4 N to 9 N
- Mating endurance 500
- Temperature -55° to +125 °C

TOOLING

- Coaxial contact extraction tool 8630-07A

European Views

www.fciconnect.com		surface ISO 1302	tolerance std ISO 406 ISO 1101	projection 	mm
TOLERANCES UNLESS OTHERWISE SPECIFIED					
Dr	PESSON	2005/10/14	ANGULAR	0.X	±0.1
Eng	PESSON	2005/10/14	LINEAR	0.XX	±0.1
Chr	LEGARE	2005/10/14	0.XX' ±2'	0.XXX	±0.1
Appr	LEGARE	2005/10/14	Product family	D-SUB	Spec ref -

rev	ecn no	dr	date
A	LS05-0086	MPE	2005/10/14
B	LS05-0107	MPE	2005/12/20
C	LS07-0001	LGO	2007/01/09
-	-	-	-
-	-	-	-
-	-	-	-
-	-	-	-

	FEMALE COAX CONTACT STRAIGHT	title	SOLDER TYPE	size	A3	Scale	5
catalog no		dwg no	C01-8639-2157	ECN	LS07-0001	Rev.	C
				CUSTOMER	sheet 1 of 1		



Copyright FCI.