

Description

STAINLESS STEEL TOP PLATE CASTOR, RED POLYURETHANE 160MM

Fixed

KF5BA160-28RX



Part Number

Swivel

KP5BA160-28RX

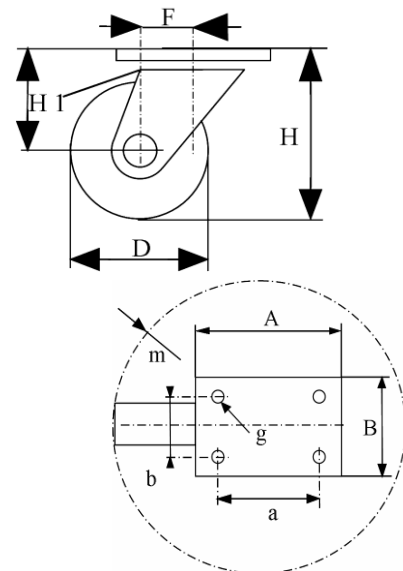


Swivel and brake

KP5BD160-28RX



	Fixed	Swivel	Swivel+brake
Wheel Diameter ØD	160 mm		
Overall Height H	197 mm ±1		
Size of plate A X B	129 x 106 mm±1		
Plate hole centres a x b	105 x 80 mm±0,3		
Plate hole	11 mm		
Offset F ±1	\	52 mm	52 mm
Width of Tread	45 mm±0,5		
Hardness of tread	shore A ± 98		
Load capacity	300 Kg		
Weight	1,3 kg	1,53 kg	1,85 kg
Temperature	- 20 / + 60 °C		



Castor Assembly :

Pressed stainless steel -AISI 304-. Swivel on two rows of balls.
Fastening by top plate.
Total lock. Metal pedal.

Wheel :

Wheel centre made of White Polyamide.
Tread : Red injected Polyurethane non marking.
Hub : Stainless Steel Roller bearing.

Features :

Low starting effort. High load capacity.
Lightweight, highly resistant to knocks and other impacts, abrasion as well as a great many chemical substances.
Corrosion resistant, easy to clean. Specially designed for humid environments.
Suited for Food industry, Hospital or Industrial Kitchen equipment.
Non staining red tyre.
Medium duty.