

Bus system flat-type plug - SACC-DSIV-FSD-4CON-L180 SCOTHR - 1542648

Please be informed that the data shown in this PDF Document is generated from our Online Catalog. Please find the complete data in the user's documentation. Our General Terms of Use for Downloads are valid (<http://phoenixcontact.com/download>)




Bus system flush-type socket, ETHERNET, 4-pos., M12 SPEEDCON, D-coded, rear/screw mounting with M12 thread, with polarity protection, with straight THR solder connection



Ethernet



Key commercial data

Packing unit	60 pc
Minimum order quantity	60 pc
GTIN	 4 046356 097918
Weight per Piece (excluding packing)	11.22 g
Custom tariff number	85366990
Country of origin	Germany

Technical data

Mechanical characteristics

Number of positions	4
Shielded	No
Connection method	THR solder connection

Ambient conditions

Ambient temperature (operation)	-25 °C ... 85 °C (Plug / socket)
Degree of protection	IP67

Material data

Inflammability class according to UL 94	HB
Contact carrier material	PPA
Contact material	CuZn
Contact surface material	Au
Cable gland material	Zinc die-cast, nickel-plated
Sealing material	FKM / EPDM

Bus system flat-type plug - SACC-DSIV-FSD-4CON-L180 SCOTHR - 1542648

Technical data

Electrical characteristics

Number of positions	4
Nominal voltage U_N	250 V
Nominal current I_N	4 A
Surge voltage category	II
Pollution degree	3

Classifications

eCl@ss

eCl@ss 4.0	27250313
eCl@ss 4.1	27250313
eCl@ss 5.0	27143423
eCl@ss 5.1	27143423
eCl@ss 6.0	27143423
eCl@ss 7.0	27449001
eCl@ss 8.0	27440103

ETIM

ETIM 3.0	EC002061
ETIM 4.0	EC000830
ETIM 5.0	EC002061

UNSPSC

UNSPSC 6.01	31251501
UNSPSC 7.0901	31251501
UNSPSC 11	31251501
UNSPSC 12.01	31251501
UNSPSC 13.2	31251501

Approvals

Approvals

Approvals

EAC

Ex Approvals

Bus system flat-type plug - SACC-DSIV-FSD-4CON-L180 SCOTHR - 1542648

Approvals

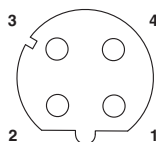
Approvals submitted

Approval details

EAC

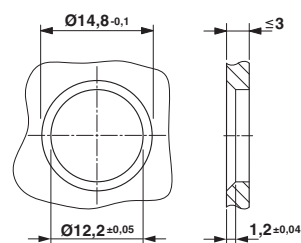
Drawings

Schematic diagram



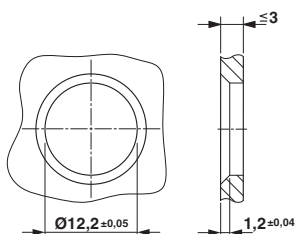
Pin assignment M12 socket, 4-pos., D-coded,
female side

Dimensioned drawing



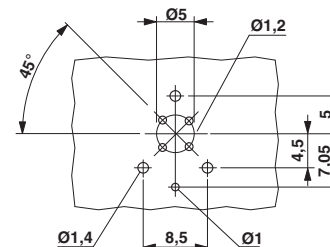
Housing cut-out for two-part M12 flush-type connectors with THR and wave soldering connection,
version 1

Dimensioned drawing



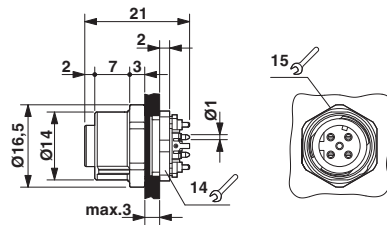
Housing cut-out for two-part M12 flush-type connectors with THR and
wave soldering connection, version 2

Drilling diagram



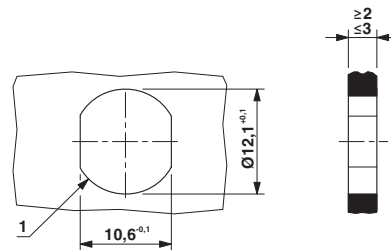
Bus system flat-type plug - SACC-DSIV-FSD-4CON-L180 SCOTHR - 1542648

Dimensioned drawing



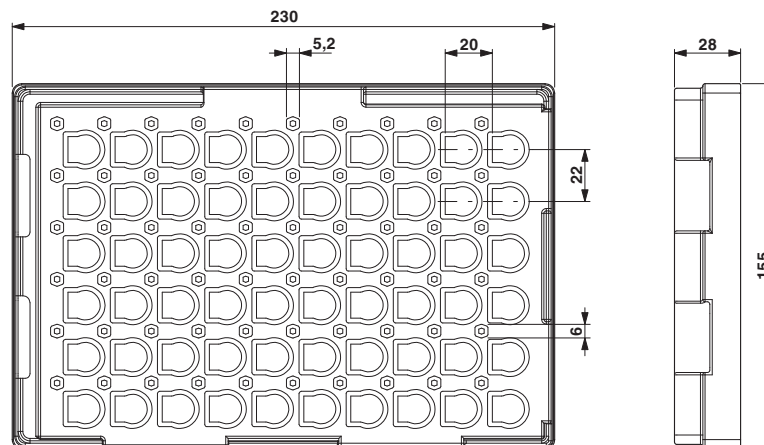
M12 flush-type connector

Dimensioned drawing



Housing cutout for M12 fastening thread, mounting panel with feed-through hole (alternative with surface as protection against rotation)

Dimensioned drawing



THR tray packaging