



Part Number : [22552122](#)

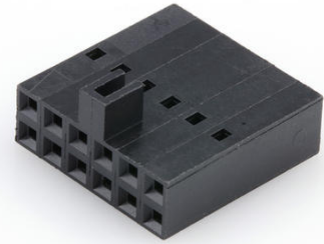
Product Description : 2.54mm Pitch SL Crimp Housing, Dual Row, Version B, Polarized, 12 Circuits, Black

Series Number : 70450

Status : Active

Product Category : Connector Housings

Engineering Number : 70450-0054



Documents & Resources

Drawings

[022552122_sd.pdf](#)

[PK-70450-100-001.pdf](#)

3D Models and Design Files

[STEP AP242](#)

[SOLIDWORKS](#)

[Creo](#)

Specifications


[PS-70058-001.pdf](#)

[PS-70400-001.pdf](#)

[TS-70058-001-001.pdf](#)

Product Environment Compliance

Compliance

GADSL/IMDS	Not Relevant
China RoHS	 per SJ/T 11365-2006
EU ELV	Not Relevant
Low-Halogen Status	Not Low-Halogen per IEC 61249-2-21
REACH SVHC	Not Contained per D(2025)4165-DC (25 June 2025)
EU RoHS	Compliant per EU 2015/863

Compliance Statements

- EU RoHS
- REACH SVHC
- Low-Halogen

Industry Documents

- IPC 1752A Class C
- IPC 1752A Class D
- Molex Product Compliance Declaration
- IEC-62474
- chemSHERPA (xml)

Substances of Interest

- PFAS

EU RoHS Certificate of Compliance

Additional Product Compliance Information

Part Details

General

Status	Active
Category	Connector Housings
Series	70450
Description	2.54mm Pitch SL Crimp Housing, Dual Row, Version B, Polarized, 12 Circuits, Black
Application	Signal, Wire-to-Board
Comments	Version B
Product Name	SL
UPC	800754396585

Agency

CSA	LR19980
UL	E29179

Physical

Breakaway	No
Circuits (maximum)	12
Color - Resin	Black
Flammability	94V-0

Gender	Receptacle
Glow-Wire Capable	No
Material - Resin	Polyester
Net Weight	1.040/g
Number of Rows	2
Packaging Type	Bag
Panel Mount	No
Pitch - Mating Interface	2.54mm
Stackable	No
Temperature Range - Operating	-40° to +105°C

Solder Process Data

Lead-Free Process Capability	N/A
------------------------------	-----

Mates With / Use With

Mates with Part(s)

Description	Part Number
C-Grid Right-Angle Dual Row Headers	<u>70229</u>
C-Grid Right-Angle, Dual Row, Low Profile Headers	<u>70247</u>
C-Grid Vertical Dual Row Breakaway Headers	<u>70280</u>
C-Grid Vertical, Dual Row, Low Profile Headers	<u>70246</u>

Use with Part(s)

Description	Part Number
SL Female Terminals	<u>70058</u>
SL Female Terminals	<u>71851</u>