

361202 R



Single row cam roller with crowned outer surface and seals on both sides

Single row cam rollers, with seals on both sides, are designed to run on all types of tracks and to be used in cam drives, conveyor systems, etc. They are based on a single-row deep groove ball bearing and have a thick-walled outer ring with a crowned running surface. They are supplied sealed and greased for the life of the bearing, and are ready-to-mount. The integral sealing can significantly prolong bearing service life because it keeps lubricant in the bearings and contaminants out.

- Run on all types of tracks, for use in cam drives, conveyor systems, etc. Crowned outer running surface
- Greased, sealed and ready to mount
- Integral sealing prolongs bearing service life
- Typical benefits of single row deep groove ball bearings

Overview

Dimensions

Bore diameter	15 mm
Functional outside diameter	40 mm
Width	11 mm

Performance

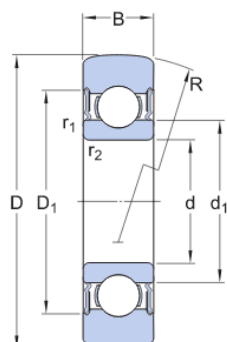
Basic dynamic load rating	7.02 kN
Basic static load rating	3.2 kN
Limiting speed	9 500 r/min

Properties

Axial guidance of outer ring	Yes
Axial internal clearance	Not applicable
Bearing part	Complete track roller
Cage	With
Coating	Without
Lubricant	Grease
Material, bearing	Bearing steel
Number of flanges, outer ring	0
Number of rows	1
Outer ring profile	Crowned
Radial internal	C3

clearance	
Relubrication feature	Without
Rolling elements	Balls
Sealing	Seal on both sides
Sealing type	Contact
Tolerance class	Normal (except crowned running surface)

Technical Specification



Dimensions

D	40 mm	Outside diameter
d	15 mm	Bore diameter
B	11 mm	Width
d_1	≈ 21.7 mm	Shoulder/recess diameter inner ring
D_1	≈ 30.4 mm	Recess diameter outer ring
R	400 mm	Profile running surface (crown) outer ring
$r_{1,2}$	min. 0.6 mm	Chamfer dimension

Calculation data

Basic dynamic load rating	C	7.02 kN
Basic static load rating	C_0	3.2 kN
Fatigue load limit	P_u	0.137 kN
Maximum dynamic radial load	F_r	max. 5.1 kN
Maximum static radial load	F_{0r}	max. 7.35 kN
Limiting speed		9 500 r/min
Calculation factor	f_0	13.1

Mass

Mass cam roller	0.048 kg
-----------------	----------

Terms and conditions

By accessing and using this website / app owned and published by AB SKF (publ.) (556007-3495 · Gothenburg) ("SKF"), you agree to the following terms and conditions:

Warranty Disclaimer and Limitation of Liability

Although every care has been taken to assure the accuracy of the information on this website / app, SKF provides this information "AS IS" and DISCLAIMS ALL WARRANTIES, EXPRESS OR IMPLIED, INCLUDING, BUT NOT LIMITED TO, IMPLIED WARRANTIES OF MERCHANTABILITY AND FITNESS FOR A PARTICULAR PURPOSE. You acknowledge that your use of this website / app is at your sole risk, that you assume full responsibility for all costs associated with use of this website / app, and that SKF shall not be liable for any direct, incidental, consequential, or indirect damages of any kind arising out of your access to, or use of the information or software made available on this website / app. Any warranties and representations in this website / app for SKF products or services that you purchase or use will be subject to the agreed upon terms and conditions in the contract for such product or service. Further, for non-SKF websites / apps that are referenced in our website / app or where a hyperlink appears, SKF makes no warranties concerning the accuracy or reliability of the information in these websites / apps and assumes no responsibility for material created or published by third parties contained therein. In addition, SKF does not warrant that this website / app or these other linked websites / apps are free from viruses or other harmful elements.

Copyright

Copyright in this website / app copyright of the information and software made available on this website / app rest with SKF or its licensors. All rights are reserved. All licensed material will reference the licensor that has granted SKF the right to use the material. The information and software made available on this website / app may not be reproduced, duplicated, copied, transferred, distributed, stored, modified, downloaded or otherwise exploited for any commercial use without the prior written approval of SKF. However, it may be reproduced, stored and downloaded for use by individuals without prior written approval of SKF. Under no circumstances may this information or software be supplied to third parties.

This website /app includes certain images used under license from Shutterstock, Inc.

Trademarks and Patents

All trademarks, brand names, and corporate logos displayed on the website / app are the property of SKF or its licensors, and may not be used in any way without prior written approval by SKF. All licensed trademarks published on this website / app reference the licensor that has granted SKF the right to use the trademark. Access to this website / app does not grant to the user any license under any patents owned by or licensed to SKF.

Changes

SKF reserves the right to make changes or additions to this website / app at any time.