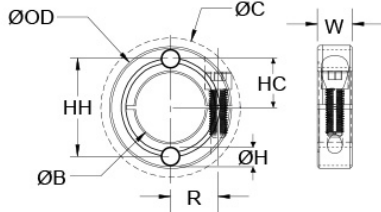




## FHD-MCL-20-AN

Ruland FHD-MCL-20-AN, 20mm Face Mount Shaft Collar with Drilled Hole, Anodized Aluminum, One-Piece Clamp Style, 40mm OD, 15mm Width



### Description

Ruland FHD-MCL-20-AN is a one-piece shaft collar with a 20mm bore, 40mm OD, and 15mm width. FHD-MCL-20-AN has drilled holes for mounting shaft collars to sprockets, pulleys, metallic plates, or other components. Drilled holes give the user flexibility to choose inch or metric mounting hardware that best suits the application. The clamp style design does not mar the shaft, is easy to remove, and is indefinitely adjustable. Equipment manufacturers benefit from the tightly controlled face to bore perpendicularity (TIR of ? .05mm). Perpendicularity is critical for alignment when the shaft collar is used as a load bearing face, mechanical stop, or for mounting components such as gears or bearings. Proprietary processes have been developed by Ruland to maintain superior fit, finish, and holding power. FHD-MCL-20-AN is stamped with the Ruland name and bore size for ease of identification. Forged screws test beyond DIN 912 12.9 standards to ensure maximum holding power. FHD-MCL-20-AN is machined from solid bar stock to a fine burr free finish and sourced exclusively from North American mills. Ruland uses high grade 2024 aluminum with an anodized finish for increased screw seating torque and added corrosion resistance. It is RoHS3 and REACH compliant and manufactured in our Marlborough, MA factory under strict controls using proprietary processes.

### Product Specifications

<b>Bore (B1)</b>	20 mm	<b>Bore Tolerance</b>	+0.050 mm / +0.012 mm
<b>Outer Diameter (OD)</b>	40 mm	<b>Clearance Diameter (C) MAX</b>	47.4 mm
<b>Width (W)</b>	15 mm	<b>Width Tolerance</b>	+0.076 mm / -0.254 mm
<b>Hole to Center (HC)</b>	15.26 mm	<b>Hole to Hole (HH)</b>	30.51 mm
<b>Hole Diameter (H)</b>	6.35 mm	<b>Recommended Shaft Tolerance</b>	+0.000 mm / -0.013 mm
<b>Forged Clamp Screw</b>	M6 x 16	<b>Screw Material</b>	18-8 300 Series Stainless Steel
<b>Hex Wrench Size</b>	5.0 mm	<b>Screw Finish</b>	Bright
<b>Seating Torque</b>	9.6 Nm	<b>Screw Location (R)</b>	14.73 mm
<b>Number of Screws</b>	1 ea	<b>Torque Wrench</b>	<a href="#">TW:BT-4C-3/8-86</a>
<b>Recommended Hex Key</b>	<a href="#">Metric Hex Keys</a>	<b>Material Specification</b>	2024-T351 Aluminum Bar
<b>Temperature</b>	-40°F to 200°F (-40°C to 93°C)	<b>Finish Specification</b>	Sulfuric Anodized MIL-A-8625 Type II, Class 2 and ASTM B580 Type B Black Anodize
<b>Manufacturer</b>	Ruland Manufacturing	<b>Country of Origin</b>	USA
<b>Weight (lbs)</b>	0.084176	<b>UPC</b>	63452937659
<b>Tariff Code</b>	8483.60.8000	<b>UNSPC</b>	31162811
<b>Note 1</b>	Performance ratings are for guidance only. The user must determine suitability for a particular application.		
<b>Prop 65</b>	⚠ <b>WARNING</b> This product can expose you to the chemical Nickel (metallic), known to the State of California to cause cancer. For more information go to <a href="http://www.P65Warnings.ca.gov">www.P65Warnings.ca.gov</a> .		