

ED Industrial HRC Fuse links



Product description

Eaton's Bussmann® series ED British Standard fuse links, size B3/B4, are specifically designed for the protection of general industrial applications e.g. power distribution, cable protection, motor protection.

Standard features

- Good peak let-through current limitation
- 1:1:6 Selective coordination ratio between "minor" and "major" fuse
- gG characteristics for cable protection and gM for motor protection applications
- Power loss values well within the limits of IEC 60269-2

Catalogue symbol:

- ED(Amps)

Technical data:

- Rated voltage: 415 / 550 V a.c.
- Rated current: 250 to 400 A
- Breaking capacity: 80 kA a.c.
- Breaking range and utilisation category: gG and gM
- BS reference: B3/B4

Standards/approvals:

- BS88-2
- IEC 60269-2
- Suitable for use in RoHS compliant applications

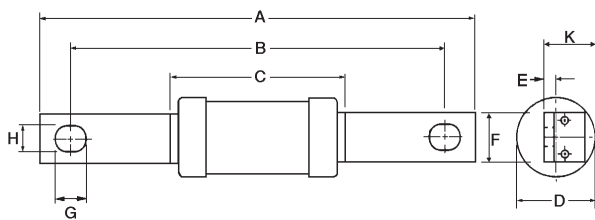
Packaging:

- MOQ 1

Table 1. Technical data

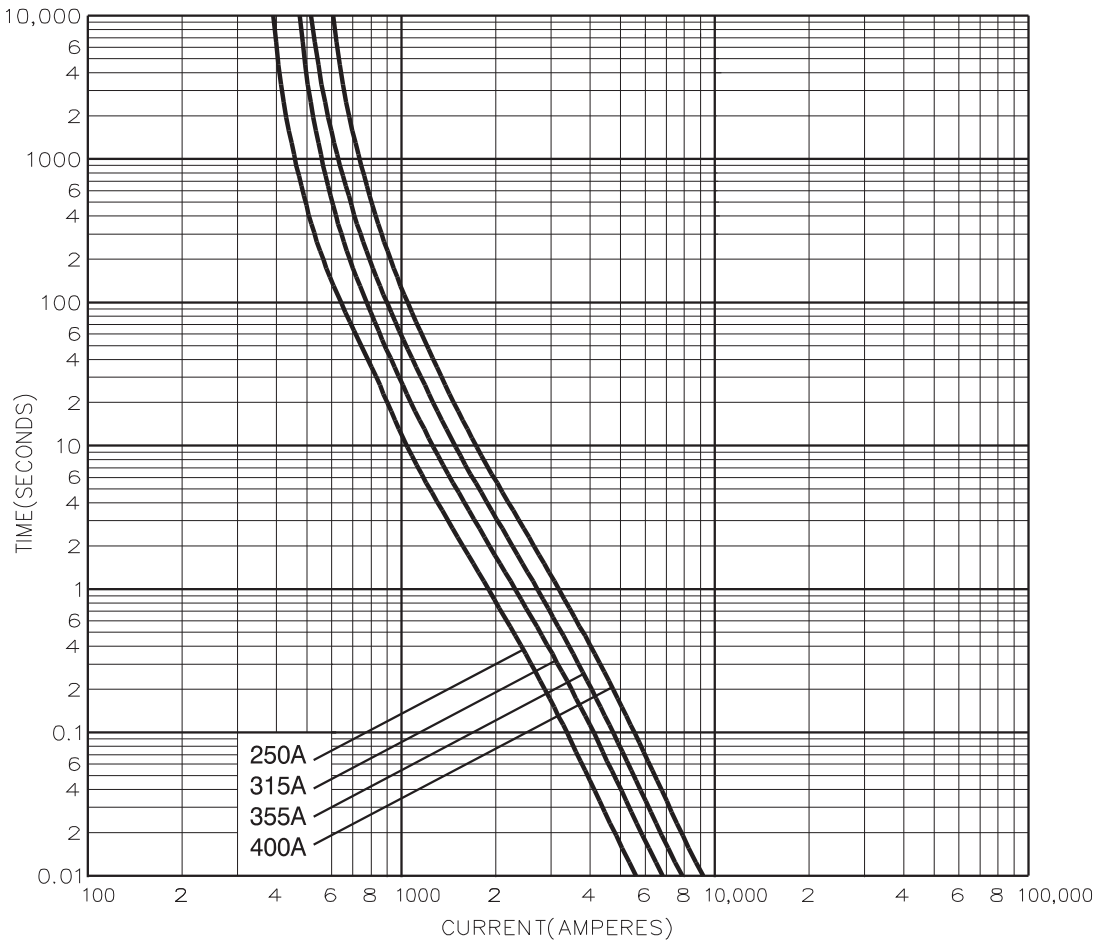
Part number	Rated voltage	Rated current (amps)	Energy integrals I ² t (A ² S)		Watts loss	Product class	Weight
			Pre-arcing	Total at 415V	W		
ED250	415 V a.c.	250	200	480	18	gG	300g
ED315	415 V a.c.	315	265	635	22	gG	300g
ED355	415 V a.c.	355	360	865	24	gG	300g
ED400	415 V a.c.	400	475	1,150	29	gG	300g
ED315M400	415 V a.c.	315M400	475	1,150	15	gM	300g
ED400M500	550 V a.c.	400M500	1,200	2,700	24	gM	590g

Dimensions - mm

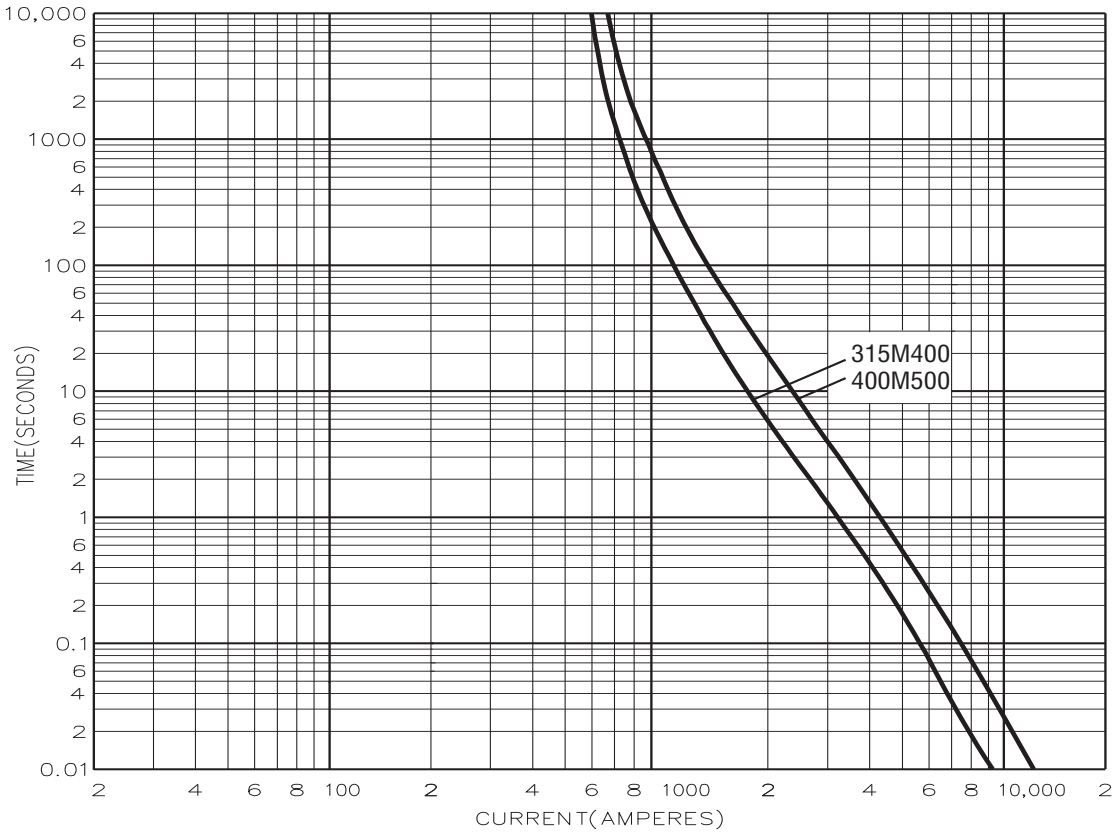


Catalogue numbers	A	B	C	D	E	F	G	H	K
ED250	136	111	47	31	4.7	19	12.5	9	22.5
ED315-400 to ED315M400	136	111	50	38	4.7	25.4	12.5	9	31
ED400M500	136	111	75	59	4.7	25.4	12.5	9	31

Time current curve - non motor rated



Time current curve - motor rated



Changes to the products, to the information contained in this document, and to prices are reserved; so are errors and omissions. Only order confirmations and technical documentation by Eaton is binding. Photos and pictures also do not warrant a specific layout or functionality. Their use in whatever form is subject to prior approval by Eaton. The same applies to Trademarks (especially Eaton, Moeller, and Cutler-Hammer). The Terms and Conditions of Eaton apply, as referenced on Eaton Internet pages and Eaton order confirmations.

Eaton
 EMEA Headquarters
 Route de la Longeraie 7
 1110 Morges, Switzerland

Eaton Electrical Products Limited
 Melton Road
 Burton-on-the-Wolds
 Leicestershire, LE12 5TH
 United Kingdom

© 2017 Eaton
 All Rights Reserved
 PDF Only
 Publication No. 4119
 October 2017

Eaton is a registered trademark.

All other trademarks are property of their respective owners.