

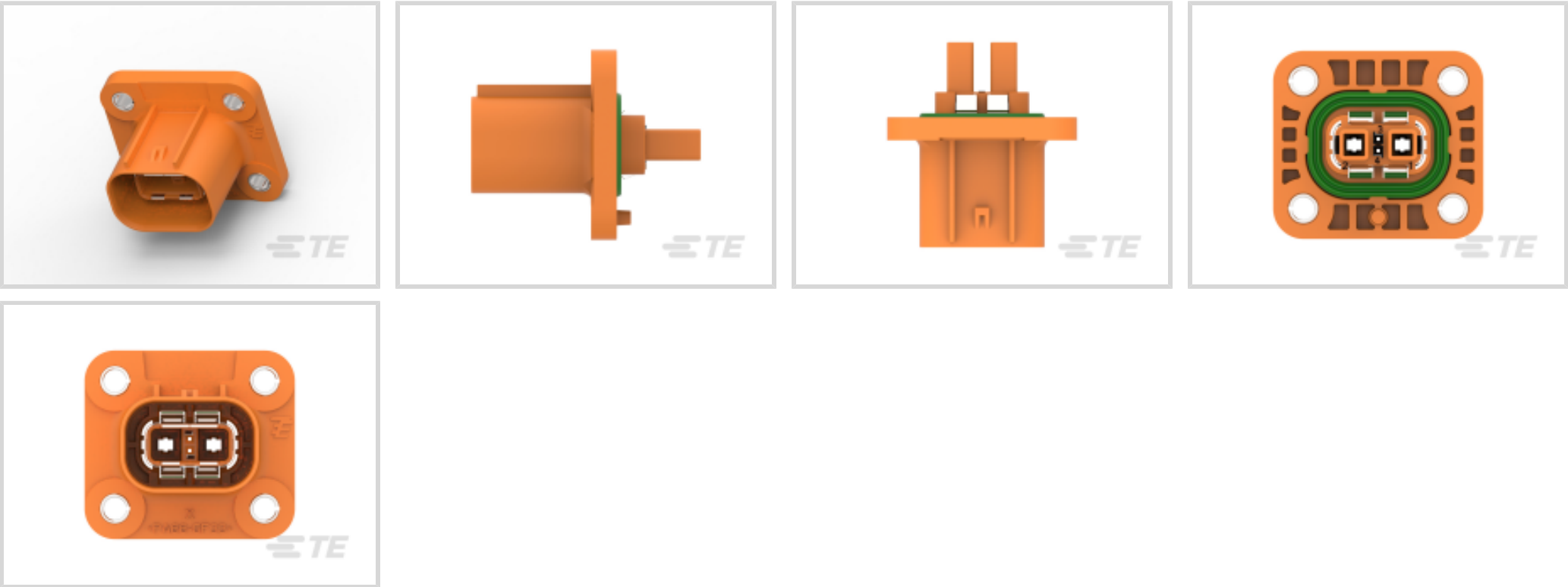


HVA 280

TE Internal #: 1-2103124-1
2 Position Housing, Housing for Male Terminals, Wire-to-Wire, 10.4 mm [.409 in] Centerline, Sealable, Orange, Signal, Panel Mount, HVA 280

[View on TE.com >](#)

Connectors > Automotive Connectors > Automotive Housings



Number of Positions: 2
Connector & Housing Type: **Housing for Male Terminals**
Mating Tab Width: .63 mm, 2.8 mm [.025 in, .11 in]
Connector System: **Wire-to-Wire**
Centerline (Pitch): 10.4 mm [.409 in]

Features

Product Type Features

Mixed & Hybrid Connector	Yes
Connector Shape	Rectangular
Connector & Housing Type	Housing for Male Terminals
Connector System	Wire-to-Wire
Sealable	Yes
Primary Locking Feature	Integrated in Housing

Configuration Features

Number of Positions	2
Number of Rows	1

Electrical Characteristics

Nominal Voltage Architecture	850 V
------------------------------	-------

Body Features

Cable Exit Angle	180°
Primary Product Color	Orange



Connector & Keying Code	A
-------------------------	---

Contact Features

Contact Size	2.8mm
Contact Type	Tab
Mating Tab Width	.63 mm, 2.8 mm[.025 in][.11 in]

Mechanical Attachment

Strain Relief	Without
Terminal Position Assurance	No
Mating Alignment Type	Keyed
Mating Alignment	With
Connector Mounting Type	Panel Mount

Housing Features

Housing Material	PA GF
Centerline (Pitch)	10.4 mm[.409 in]

Dimensions

Product Width	40.6 mm[1.598 in]
Product Length	45.4 mm[1.787 in]
Connector Height	49 mm[1.929 in]

Usage Conditions

Operating Temperature (Max)	125 °C[158 °F][167 °F][176 °F][185 °F][194 °F][212 °F][221 °F][230 °F][248 °F][257 °F][266 °F][284 °F]
Operating Temperature Range	-40 – 140 °C[-40 – 284 °F]

Operation/Application

Circuit Application	Signal
---------------------	--------

Industry Standards

UL Flammability Rating	UL 94HB
------------------------	---------

Packaging Features

Packaging Method	Package
Packaging Quantity	1

Other

Serviceable	No
-------------	----



Connector Position Assurance Capable

No

Product Compliance

[For compliance documentation, visit the product page on TE.com>](#)

EU RoHS Directive 2011/65/EU	Compliant
EU ELV Directive 2000/53/EC	Compliant
China RoHS 2 Directive MIIT Order No 32, 2016	No Restricted Materials Above Threshold
EU REACH Regulation (EC) No. 1907/2006	Current ECHA Candidate List: JAN 2025 (247) Candidate List Declared Against: JUNE 2024 (241) Does not contain REACH SVHC
Halogen Content	Low Bromine/Chlorine - Br and Cl < 900 ppm per homogenous material. Also BFR /CFR/PVC Free
Solder Process Capability	Not reviewed for solder process capability

Product Compliance Disclaimer

This information is provided based on reasonable inquiry of our suppliers and represents our current actual knowledge based on the information they provided. This information is subject to change. The part numbers that TE has identified as EU RoHS compliant have a maximum concentration of 0.1% by weight in homogenous materials for lead, hexavalent chromium, mercury, PBB, PBDE, DBP, BBP, DEHP, DIBP, and 0.01% for cadmium, or qualify for an exemption to these limits as defined in the Annexes of Directive 2011/65/EU (RoHS2). Finished electrical and electronic equipment products will be CE marked as required by Directive 2011/65/EU. Components may not be CE marked. Additionally, the part numbers that TE has identified as EU ELV compliant have a maximum concentration of 0.1% by weight in homogenous materials for lead, hexavalent chromium, and mercury, and 0.01% for cadmium, or qualify for an exemption to these limits as defined in the Annexes of Directive 2000/53/EC (ELV). Regarding the REACH Regulation, the information TE provides on SVHC in articles for this part number is based on the latest European Chemicals Agency (ECHA) 'Guidance on requirements for substances in articles' posted at this URL: <https://echa.europa.eu/guidance-documents/guidance-on-reach>

Compatible Parts



TE Part # YHV280-2PM-P-4MM-A
HVA280-2PHM,PASS,4SQMM,KEY A



TE Part # 1587733-1
SHIPPING CAP, CAP, HVA280-3PM



TE Part # YHV280-2PM-S-4MM-B
HVA280-2PHM,SHUNTED,4SQMM, KEY B

Also in the Series | **HVA 280**



Automotive Headers(1)



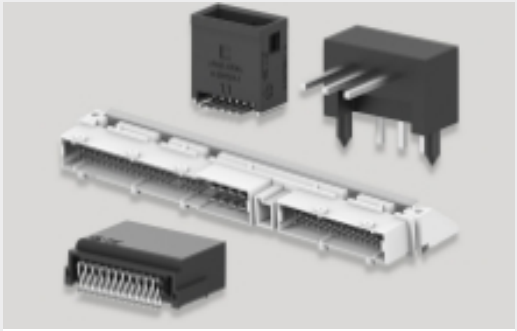
Automotive Housings(1)



Electric, Hybrid & Fuel Cell Cable Assemblies(2)



High Voltage Wire Processing Equipment(7)



PCB Headers & Receptacles(1)



Rectangular Power Connectors(1)

Customers Also Bought



TE Part #K1125921
Batt Disconnect 35-524-231-R-A2-900



TE Part #2-962919-2
TAB 5.8x0.8 CONTACT CF SWS Ag



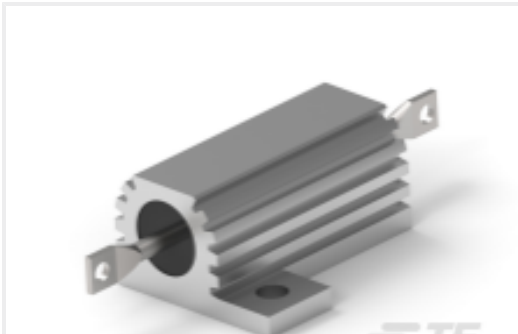
TE Part #7-2176416-6
9W STD M/OX 5% 68K



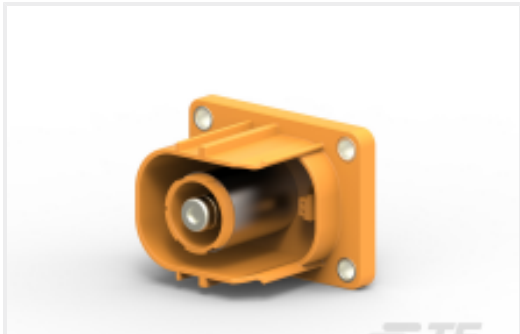
TE Part #1394353-2
FLACHSTE A-P 1,5



TE Part #1-968853-3
AMP MCP 2.8, CONTACT



TE Part #CAT-C339-T419
Power Resistor: Aluminum Housed, 75 Watt



TE Part #2137740-1
HVP1100 1POS HEADER 90 DEG ASSY SLD



TE Part #5-2103177-1
PLUG ASSY, KEY A, FA, HVA280-2PHI XE



TE Part #1587826-2
CABLE SEAL, SIZE B, HVA280-2PI

Documents



Product Drawings

HEADER ASSY, Ag SHIELD, KEY A, HVA280-2P

English

CAD Files

3D PDF

3D

Customer View Model

ENG_CVM_CVM_1-2103124-1_B.2d_dxf.zip

English

Customer View Model

ENG_CVM_CVM_1-2103124-1_B.3d_igs.zip

English

Customer View Model

ENG_CVM_CVM_1-2103124-1_B.3d_stp.zip

English

By downloading the CAD file I accept and agree to the [Terms and Conditions](#) of use.

Instruction Sheets

Instruction Sheet (U.S.)

English