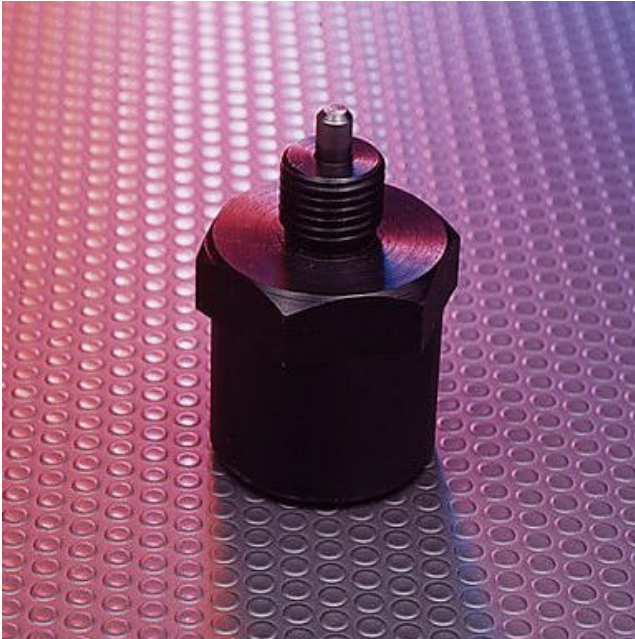


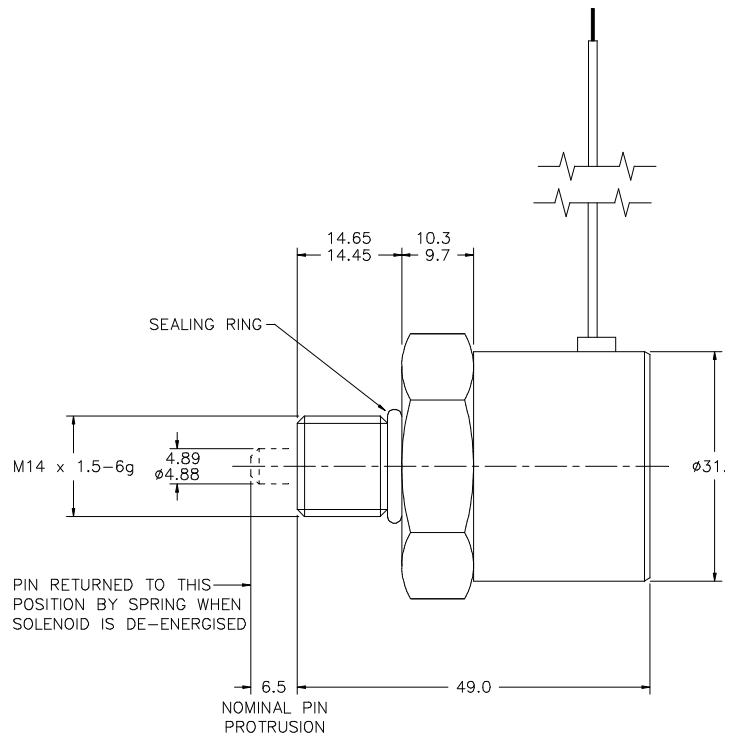
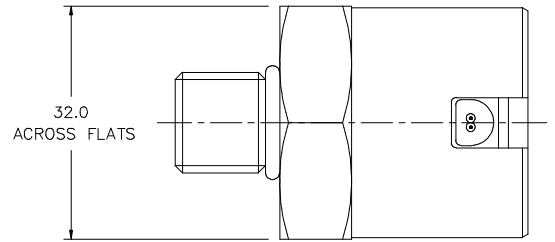
Solenoid Locks

Interlock

Model SD283



- Articulated Plunger Design
- High Side-Load Capability
- Optional Compliance with IP65
- Optional DC Voltage Ratings
- Optional Wear-Resistant Pin Finish
- Optional Bearing-Mounted Pin
- Flying Leads with Optional Connectors
- Threaded Mounting
- Alternative Finishes
- Nom. Power 11W at 100% ED



TOLERANCES (UNLESS STATED) ± 0.25

Power 11W

Available voltages
 12Vdc 100%ED Rated
 24Vdc 100%ED Rated