

## Features

- 300-1250 ppr. Resolution
- Incremental encoder output: Push-Pull, TTL, Linedriver or HLD output
- 40 mm case diameter
- 6-8 mm rod diameter  
3500 rpm max.

## RS PRO Motion Control Sensor Optic Rotary Incremental Encoder

Stock No.. 0100486

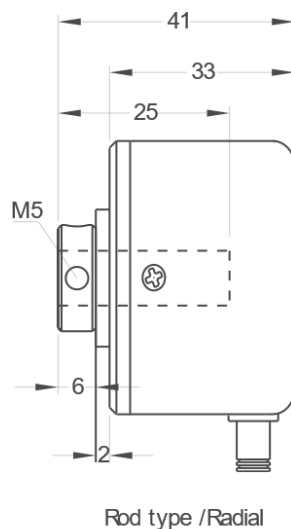


RS Professionally Approved Products bring to you professional quality parts across all product categories. Our product range has been tested by engineers and provides a comparable quality to the leading brands without paying a premium price.

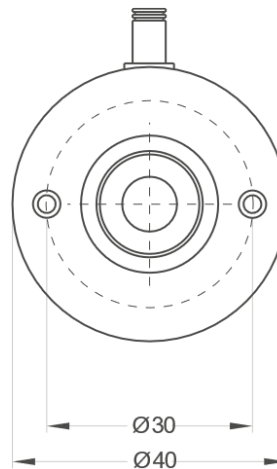
## Product Description

Series designed as compact, highly robust, rotary motion control sensors, using incremental optic measuring technology, up to 5000 ppr. resolution.  
Series provides angular speed & displacement feedback for wide range of industrial applications.

## Mechanical Specifications



Rod type /Radial



### Push - Pull Cable Output

+V : Brown  
0V : White  
GND: Shield  
Ch A: Yellow  
Ch B: Green  
Ch Z: Gray

### TTL - HLD - Linedriver Cable Output

+V : Brown  
0V : White  
GND : Shield  
Ch A : Yellow  
Ch B : Green  
Ch Z : Gray  
Ch A inv: Blue  
Ch B inv: Red  
Ch Z inv: Pink

Resolution	300-1250 ppr.
Output channels	A,B,Z or AA,BB, ZZ
Output type	TTL, Linedriver, Push-Pull, HLD
Power supply	5 VDC, 5-24 VDC or 8-24 VDC
Power consumption(without load)	<40 mA (24 VDC)
Cable	1.5 meter (standard) 5 wire + shield (Push-Pull) 1.5 meter (standard) 8 wire + shield (Linedriver)
Maximum permissible shaft loading radial	80 N
Displacement speed	3500 rpm
Rod diameter	Ø6-8 mm
Rod material	Stainless steel
Case dimension	Ø40 mm
Case material	Aluminium and painted steel
Protection level	IP 54
Operating temperature	-20°C ... +80°C
Storage temperature	-30°C ... +90°C

## Approvals

Declarations	CE, UKCA, ROHS, REACH
--------------	-----------------------

## Article

RS PRO Part Number	MPN	Semi Hollow Shaft Diameter	Output	Resolution	Pover Supply	Connector / Cable
	0100486	8	High Line driver A, A', B, B' Z, Z'	1024 ppr.	8-24 VDC	2,5 meter cable