

Mizu-P25™ Miniature Waterproof Connectors 250 Volts Type



REV.	C1																		
SHEET	1-13																		
REVISE ON PC ONLY							TITLE: APPLICATION SPECIFICATION FOR 2.5 WATERPROOF CONN.												
C1	REVISED 620884 2019/07/23 R.HORI																		
	THIS DOCUMENT CONTAINS INFORMATION THAT IS PROPRIETARY TO MOLEX ELECTRONIC TECHNOLOGIES, LLC AND SHOULD NOT BE USED WITHOUT WRITTEN PERMISSION																		
REV.	DESCRIPTION						THIS DOCUMENT CONTAINS INFORMATION THAT IS PROPRIETARY TO MOLEX ELECTRONIC TECHNOLOGIES, LLC AND SHOULD NOT BE USED WITHOUT WRITTEN PERMISSION												
DESIGN CONTROL JTR			STATUS																
WRITTEN BY: SINAOKA			CHECKED BY: SANDO			APPROVED BY: MAYAMAMOTO			DATE: 2011/12/02										
DOCUMENT NUMBER AS-52117-001							DOC. TYPE PS		DOC. PART 001		CUSTOMER GENERAL MARKET					SHEET 1 OF 13			
EN-127(2015-12)																			

Rev.	MODIFICATION	EC NO.	SHEET	Date
A	PROPOSED & RELEASED	JTR2012-0053	ALL	2012/ 2/ 3
B	REVISED	JTR2016-0105	ALL	2016/ 5/13
C	REVISED	607893	SHEET4	2018/11/20
C1	REVISED	620884	SHEET3	2019/07/23

REVISE ON PC ONLY

C1

SEE SHEET 1 OF 13

TITLE:

**APPLICATION SPECIFICATION
FOR 2.5 WATERPROOF CONN.**THIS DOCUMENT CONTAINS INFORMATION THAT IS PROPRIETARY TO MOLEX ELECTRONIC
TECHNOLOGIES, LLC AND SHOULD NOT BE USED WITHOUT WRITTEN PERMISSION

REV.

DESCRIPTION

DOCUMENT NUMBER

AS-52117-001

DOC. TYPE

PS

DOC. PART

001CUSTOMER
GENERAL MARKET

SHEET

2 OF 13

SUMMARY**1.0 GENERAL PRESENTATION****1.1 PART NUMBERS****1.2 COMPONENTS****2.0 CONNECTOR ASSEMBLY PROCESS****2.1 TERMINALS CRIMPING****2.2 TERMINALS INSERTION****2.3 CAP LOCKING****2.4 MATING****2.5 UNMATING**

REVISE ON PC ONLY

C1

SEE SHEET 1 OF 13

TITLE:

**APPLICATION SPECIFICATION
FOR 2.5 WATERPROOF CONN.**THIS DOCUMENT CONTAINS INFORMATION THAT IS PROPRIETARY TO MOLEX ELECTRONIC
TECHNOLOGIES, LLC AND SHOULD NOT BE USED WITHOUT WRITTEN PERMISSION

REV.

DESCRIPTION

DOCUMENT NUMBER

AS-52117-001

DOC. TYPE

PS

DOC. PART

001

CUSTOMER

GENERAL MARKET

SHEET

3 OF 13

1.0 GENERAL PRESENTATION

The plug and receptacle housings (hereinafter referred to as "housing assembly ") include a wire-end seal and are shipped in a pre-lock state, whereby the cap is not completely locked, but is held in a provisional state.

1.1 PART NUMBERS

DESCRIPTION	MOLEX P/N	COLOR
CONNECTOR		
Plug Housing Assembly 2way	52116-0240	White
	52116-0241	Black
	52116-0242	Red
	52116-0243	White
Plug Housing Assembly 3way	52116-0340	White
	52116-0341	Black
	52116-0342	Red
Plug Housing Assembly 4way	52116-0410	White
	52116-0411	Black
Receptacle Housing Assembly 2way	52117-0240	White
	52117-0241	Black
	52117-0242	Red
	52117-0243	White
Receptacle Housing Assembly 3way	52117-0244	Black
	52117-0340	White
	52117-0341	Black
Receptacle Housing Assembly 4way	52117-0342	Red
	52117-0410	White
	52117-0411	Black
TERMINAL		
Crimp Pin	50038-8*00	N / A
Crimp Receptacle	50039-8*00	N / A

REVISE ON PC ONLY	
C1	SEE SHEET 1 OF 13
REV.	DESCRIPTION

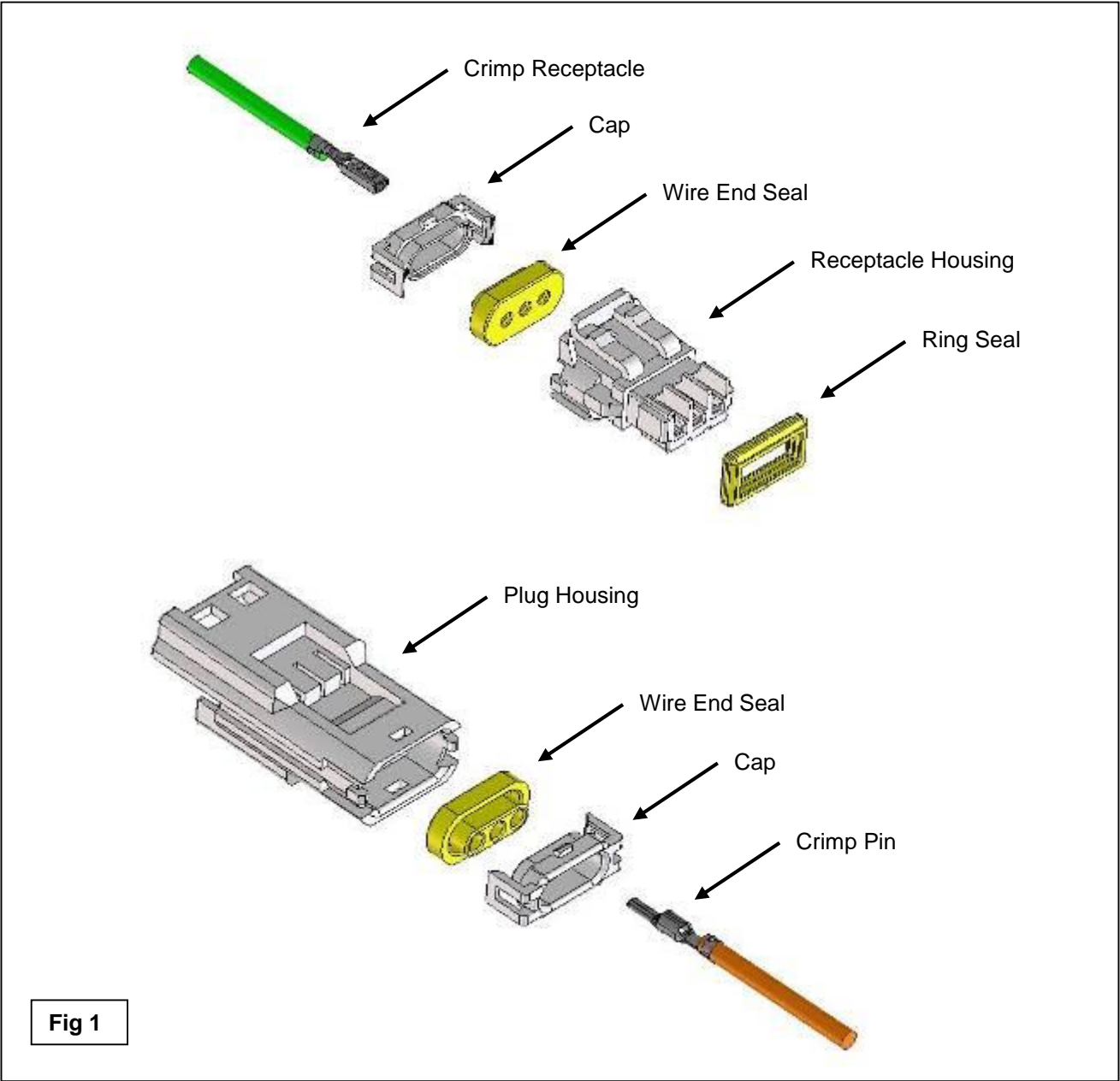
TITLE:

APPLICATION SPECIFICATION FOR 2.5 WATERPROOF CONN.

THIS DOCUMENT CONTAINS INFORMATION THAT IS PROPRIETARY TO MOLEX ELECTRONIC TECHNOLOGIES, LLC AND SHOULD NOT BE USED WITHOUT WRITTEN PERMISSION

DOCUMENT NUMBER AS-52117-001	DOC. TYPE PS	DOC. PART 001	CUSTOMER GENERAL MARKET	SHEET 4 OF 13
---------------------------------	-----------------	------------------	----------------------------	------------------

1.2 COMPONENTS



REVISE ON PC ONLY		TITLE: APPLICATION SPECIFICATION FOR 2.5 WATERPROOF CONN.			
C1	SEE SHEET 1 OF 13				
REV.	DESCRIPTION	THIS DOCUMENT CONTAINS INFORMATION THAT IS PROPRIETARY TO MOLEX ELECTRONIC TECHNOLOGIES, LLC AND SHOULD NOT BE USED WITHOUT WRITTEN PERMISSION			
DOCUMENT NUMBER AS-52117-001		DOC. TYPE PS	DOC. PART 001	CUSTOMER GENERAL MARKET	SHEET 5 OF 13
EN-127(2015-12)					

2.0 CONNECTOR ASSEMBLY PROCESS

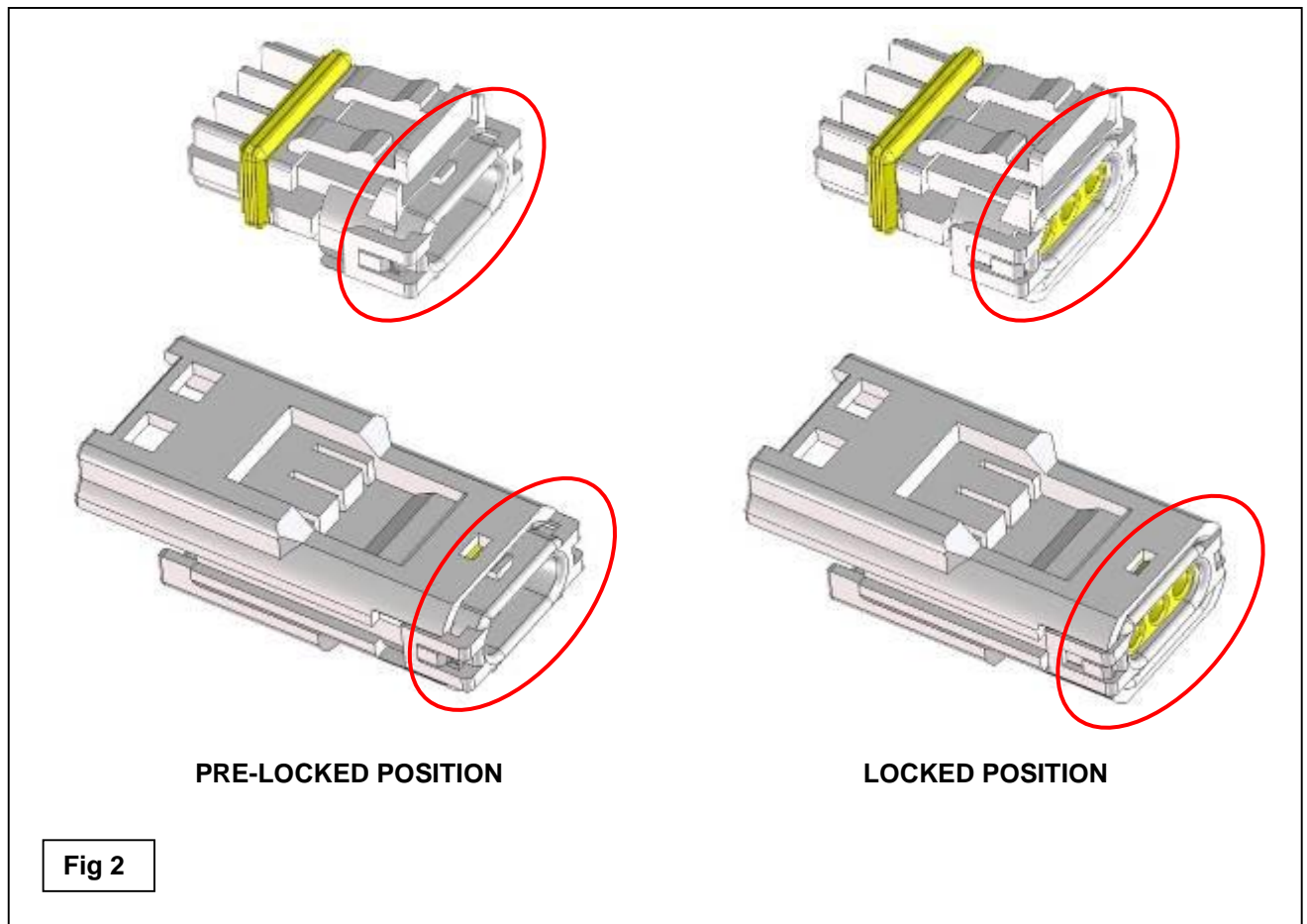
2.1 TERMINALS CRIMPING

Please refer to Molex Crimp Specifications [AS-50038-001].

2.2 TERMINALS INSERTION

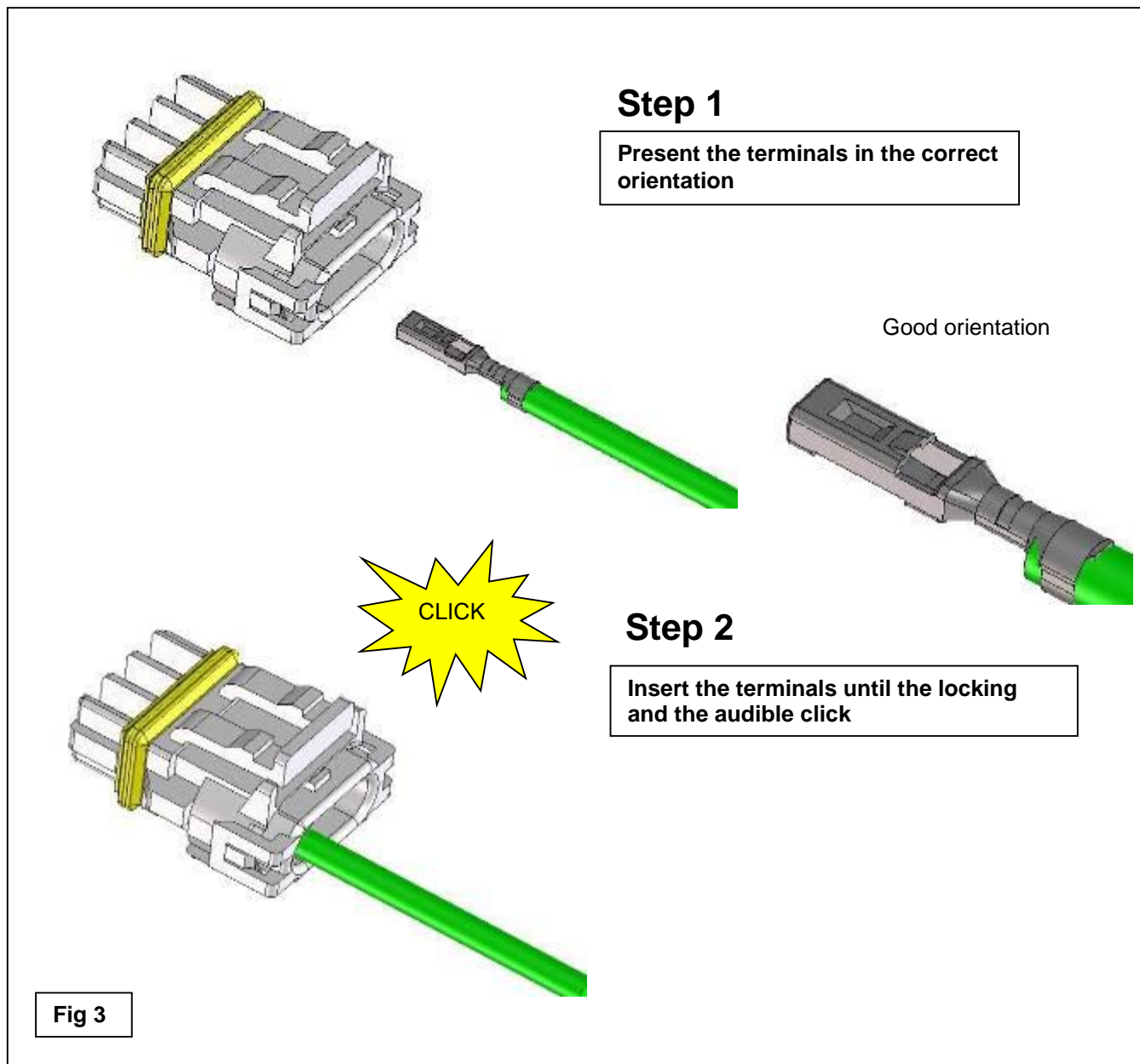
WARNING:

BEFORE THE TERMINAL INSERTION, PLEASE MAKE SURE THAT THE CAPS LOCK IS IN PRE-LOCKED POSITION.



REVISE ON PC ONLY		TITLE: APPLICATION SPECIFICATION FOR 2.5 WATERPROOF CONN.			
C1	SEE SHEET 1 OF 13				
REV.	DESCRIPTION	THIS DOCUMENT CONTAINS INFORMATION THAT IS PROPRIETARY TO MOLEX ELECTRONIC TECHNOLOGIES, LLC AND SHOULD NOT BE USED WITHOUT WRITTEN PERMISSION			
DOCUMENT NUMBER AS-52117-001		DOC. TYPE PS	DOC. PART 001	CUSTOMER GENERAL MARKET	SHEET 6 OF 13

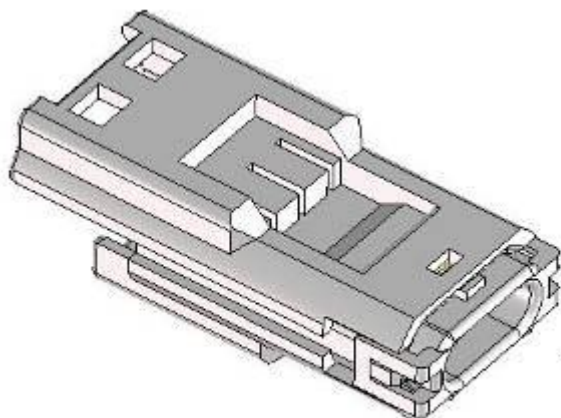
With the housing assembly and terminal facing each other as below (Step1), proceed to insert terminal into the housing in the wire-end seal side until it locks into the housing assembly with a “click”. (Step2) If the terminal is in the reverse position, it will not lock. In this situation, reconfirm the proper position of the terminal and reinsert.



REVISE ON PC ONLY		TITLE: APPLICATION SPECIFICATION FOR 2.5 WATERPROOF CONN.			
C1	SEE SHEET 1 OF 13				
REV.	DESCRIPTION	THIS DOCUMENT CONTAINS INFORMATION THAT IS PROPRIETARY TO MOLEX ELECTRONIC TECHNOLOGIES, LLC AND SHOULD NOT BE USED WITHOUT WRITTEN PERMISSION			
DOCUMENT NUMBER AS-52117-001		DOC. TYPE PS	DOC. PART 001	CUSTOMER GENERAL MARKET	SHEET 7 OF 13

Step 1

Present the terminals in the correct orientation



Good orientation



CLICK

Step 2

Insert the terminals until the locking and the audible click

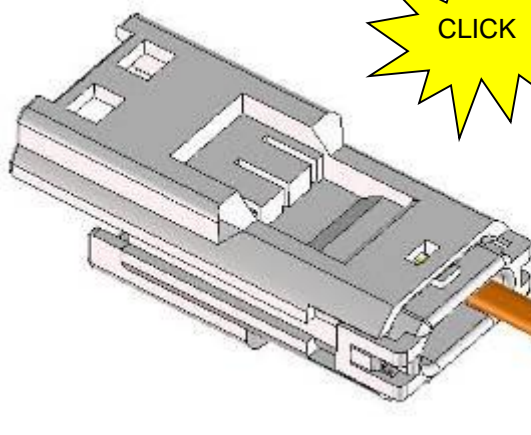


Fig 4

REVISE ON PC ONLY		TITLE: APPLICATION SPECIFICATION FOR 2.5 WATERPROOF CONN.			
C1	SEE SHEET 1 OF 13				
REV.	DESCRIPTION	THIS DOCUMENT CONTAINS INFORMATION THAT IS PROPRIETARY TO MOLEX ELECTRONIC TECHNOLOGIES, LLC AND SHOULD NOT BE USED WITHOUT WRITTEN PERMISSION			
DOCUMENT NUMBER AS-52117-001		DOC. TYPE PS	DOC. PART 001	CUSTOMER GENERAL MARKET	SHEET 8 OF 13

WARNING:

INSERT THE CRIMPED TERMINALS STRAIGHTLY INTO THE WIRE END SEAL OPENING. DO NOT TWIST OR SLANT THE CRIMPED TERMINALS WHEN INSERTING. WHEN THE TERMINAL SEEMS TO BE CAUGHT DURING INSERTION, DO NOT FORCE THE TERMINALS INTO THE HOUSING AND INSERT THE TERMINAL AGAIN. IF TERMINALS ARE FORCED IN, IT COULD CAUSE THE SEALING TO TEAR.

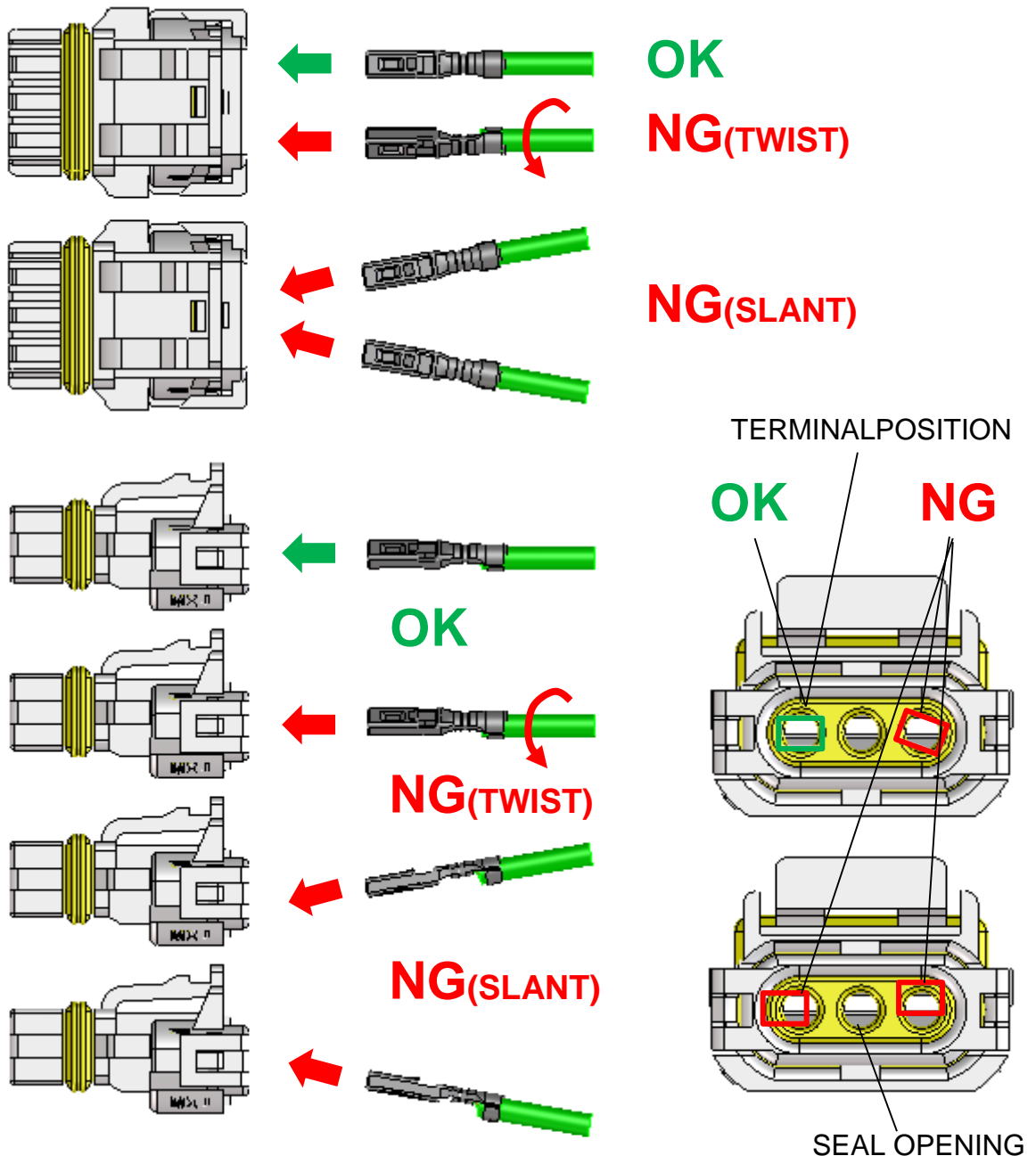
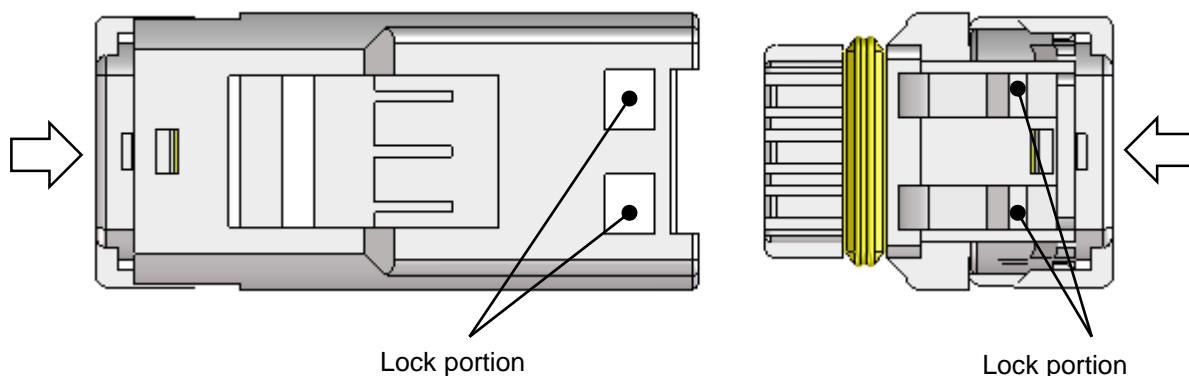


Fig 5

REVISE ON PC ONLY		TITLE:			
C1	SEE SHEET 1 OF 13	APPLICATION SPECIFICATION FOR 2.5 WATERPROOF CONN.			
REV.	DESCRIPTION	THIS DOCUMENT CONTAINS INFORMATION THAT IS PROPRIETARY TO MOLEX ELECTRONIC TECHNOLOGIES, LLC AND SHOULD NOT BE USED WITHOUT WRITTEN PERMISSION			
DOCUMENT NUMBER AS-52117-001		DOC. TYPE PS	DOC. PART 001	CUSTOMER GENERAL MARKET	SHEET 9 OF 13

2.3 CAP LOCKING

After confirming the proper position of the terminal, push the cap in the direction of the arrow. Using the splash-proof connector cap tool, the cap will lock securely and easily. See Housing Assembly/Cap Fitting Tool Cross Reference Table.



Housing Assembly/Cap Fitting Tool Cross Reference

Housing Assembly	Cap Fitting Tool	Note
52266-02**	---	---
52266-0***	57147-6000	(Wire Type) AVSS0.3
52266-0***	57170-6000	(Wire Type) AVS0.3
52213-02**	---	---
52213-0***	57148-6000	(Wire Type) AVSS0.3
52213-0***	57171-6000	(Wire Type) AVS0.3
52116-0***	57130-6000	---
52117-0***	57131-6000	---

C1

SEE SHEET 1 OF 13

REV.

DESCRIPTION

TITLE:

**APPLICATION SPECIFICATION
FOR 2.5 WATERPROOF CONN.**

THIS DOCUMENT CONTAINS INFORMATION THAT IS PROPRIETARY TO MOLEX ELECTRONIC
TECHNOLOGIES, LLC AND SHOULD NOT BE USED WITHOUT WRITTEN PERMISSION

DOCUMENT NUMBER
AS-52117-001

DOC. TYPE
PS

DOC. PART
001

CUSTOMER
GENERAL MARKET

SHEET
10 OF 13

When the cap locks completely, the cap lock portion will show in the lock window (reverse side). If only one side is locked, water resistance may be compromised.

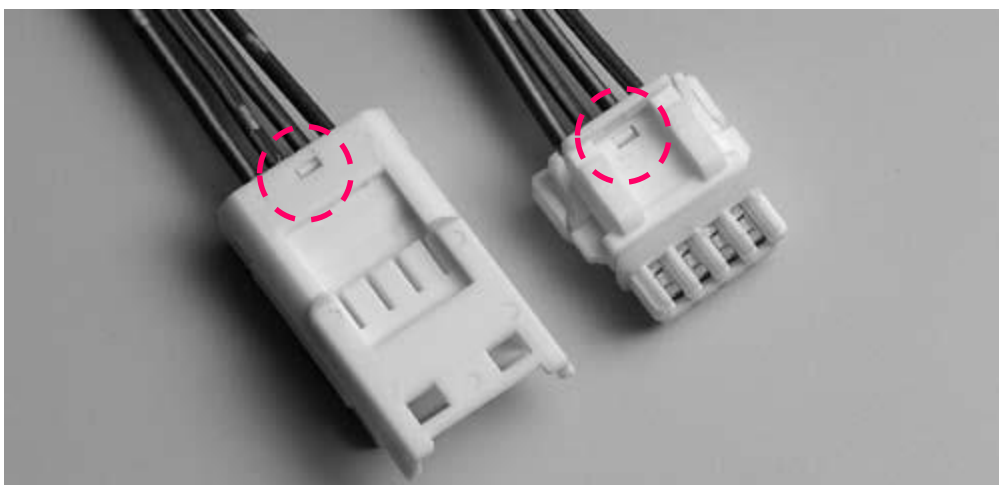
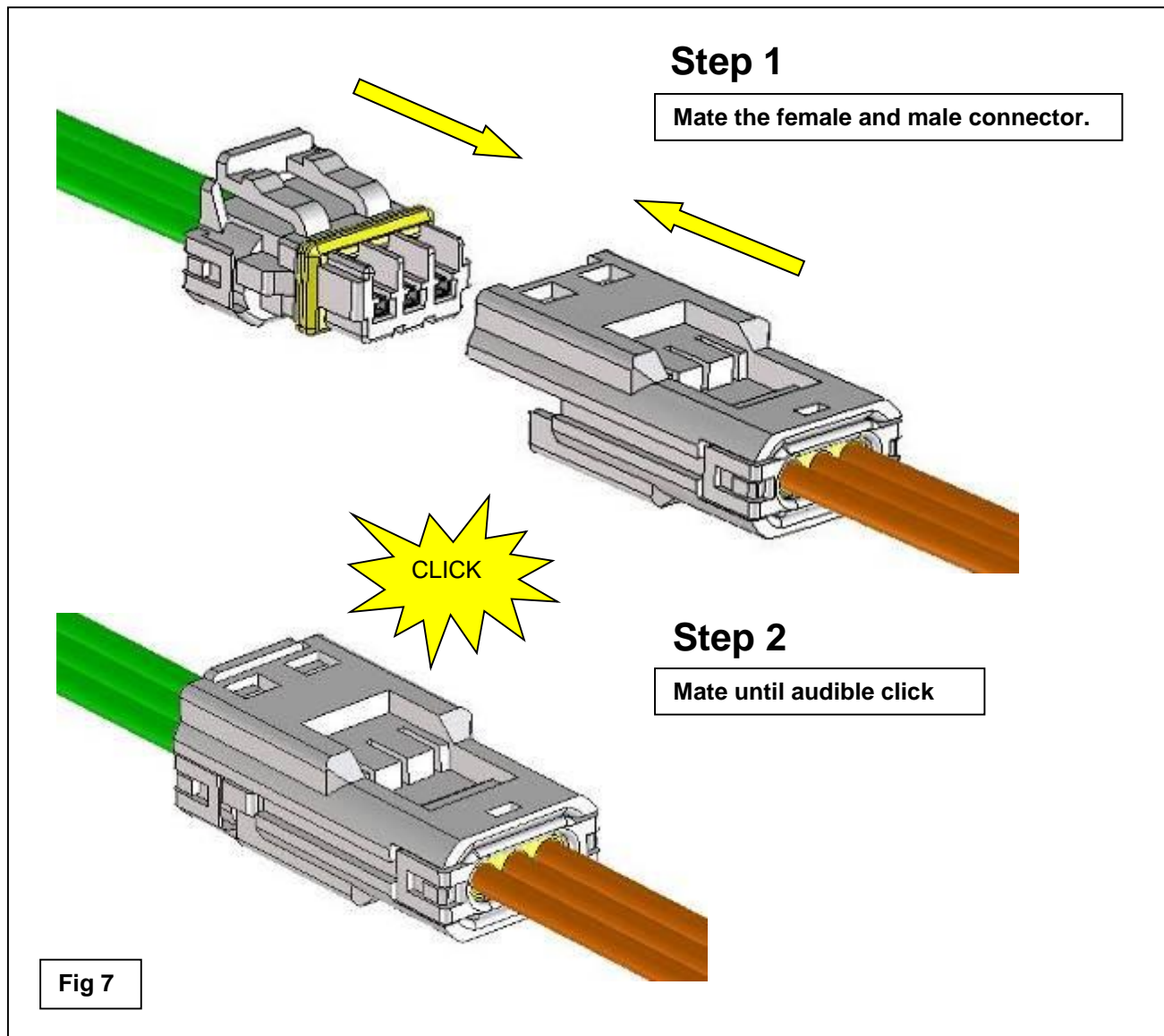


Photo 1

	REVISE ON PC ONLY		TITLE: APPLICATION SPECIFICATION FOR 2.5 WATERPROOF CONN.			
	C1	SEE SHEET 1 OF 13				
	REV.	DESCRIPTION	THIS DOCUMENT CONTAINS INFORMATION THAT IS PROPRIETARY TO MOLEX ELECTRONIC TECHNOLOGIES, LLC AND SHOULD NOT BE USED WITHOUT WRITTEN PERMISSION			
DOCUMENT NUMBER AS-52117-001			DOC. TYPE PS	DOC. PART 001	CUSTOMER GENERAL MARKET	SHEET 11 OF 13
EN-127(2015-12)						

2.4 MATING

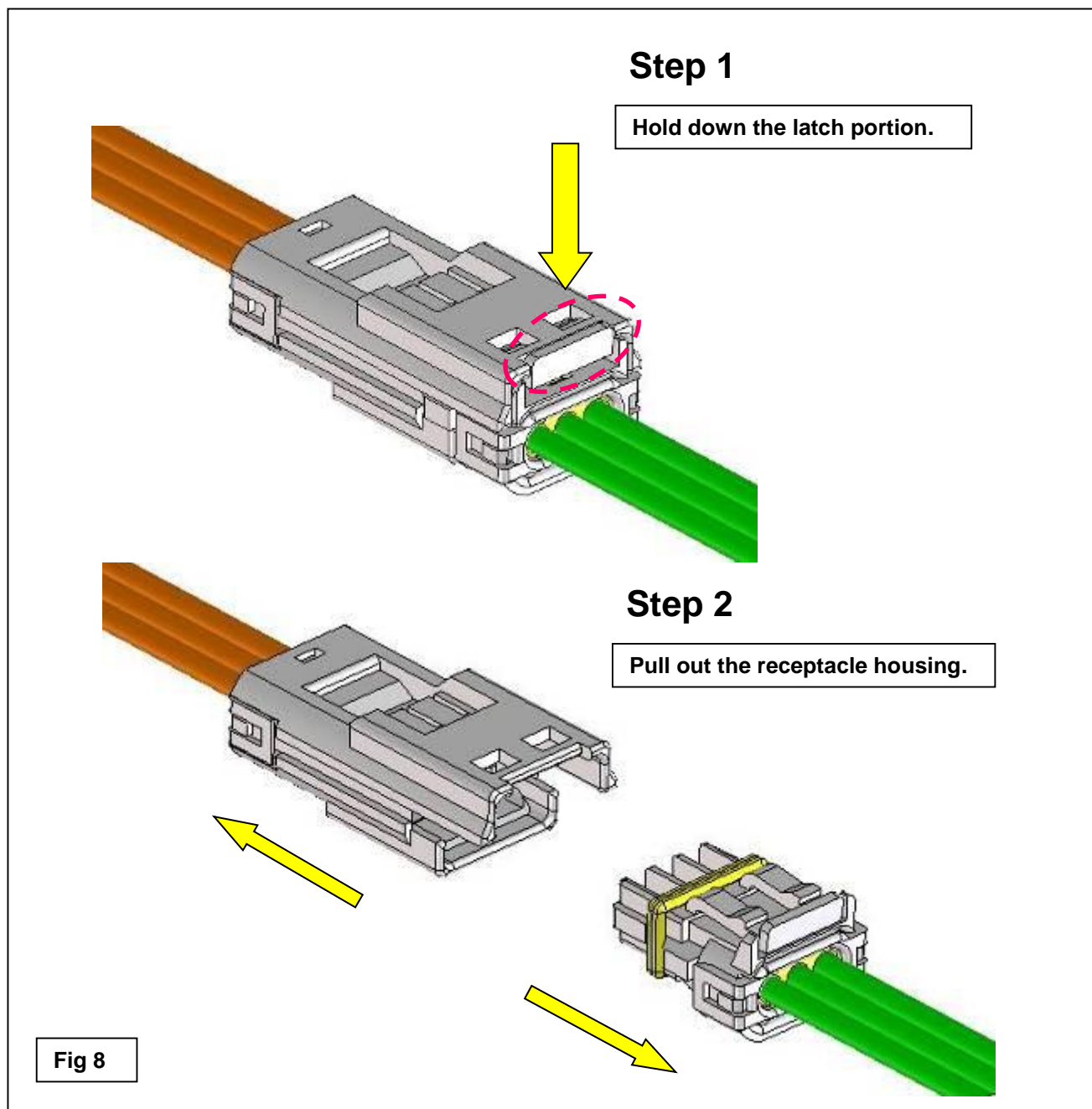
Join the lock portion of the plug and receptacle housings (Fig 7). Continue mating until a “click” is felt or heard.



REVISE ON PC ONLY		TITLE: APPLICATION SPECIFICATION FOR 2.5 WATERPROOF CONN.			
C1	SEE SHEET 1 OF 13				
REV.	DESCRIPTION	THIS DOCUMENT CONTAINS INFORMATION THAT IS PROPRIETARY TO MOLEX ELECTRONIC TECHNOLOGIES, LLC AND SHOULD NOT BE USED WITHOUT WRITTEN PERMISSION			
DOCUMENT NUMBER AS-52117-001		DOC. TYPE PS	DOC. PART 001	CUSTOMER GENERAL MARKET	SHEET 12 OF 13

2.5 UNMATING

Hold down the latch portion of the receptacle housing (Step 1) and pull out the receptacle housing (Step 2).



REVISE ON PC ONLY		TITLE: APPLICATION SPECIFICATION FOR 2.5 WATERPROOF CONN.			
C1	SEE SHEET 1 OF 13				
REV.	DESCRIPTION	THIS DOCUMENT CONTAINS INFORMATION THAT IS PROPRIETARY TO MOLEX ELECTRONIC TECHNOLOGIES, LLC AND SHOULD NOT BE USED WITHOUT WRITTEN PERMISSION			
DOCUMENT NUMBER AS-52117-001		DOC. TYPE PS	DOC. PART 001	CUSTOMER GENERAL MARKET	SHEET 13 OF 13