



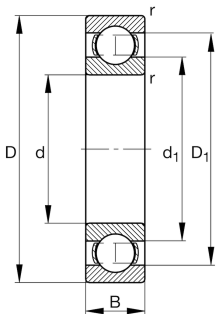
FAG

16034-C3 [🔗](#)

Deep groove ball bearing

Deep groove ball bearing 160, single row,
steel sheet metal cage

Technical information



Your current product variant

Sealing	Without	Not sealed
Cage	JN	Steel sheet metal
Tolerance class	PN	Normal (PN)
Dimensional / heat stabilization	S1	Rings dimensional stabilized up to 200°
Lubricant	Without	Bearing not greased
Radial internal clearance	C3 (Group 3)	Internal clearance larger than CN
Bore type	Z	Cylindrical

Main Dimensions & Performance Data

d	170 mm	Bore diameter
D	260 mm	Outside diameter
B	28 mm	Width
C _r	131,000 N	Basic dynamic load rating, radial
C _{0r}	136,000 N	Basic static load rating, radial
C _{ur}	5,600 N	Fatigue load limit, radial
n _G	3,500 1/min	Limiting speed
n _{gr}	2,850 1/min	Reference speed
≈m	5.15 kg	Weight



Mounting dimensions

$d_{a\min}$	177 mm	Minimum diameter shaft shoulder
$D_{a\max}$	253 mm	Maximum diameter of housing shoulder
$r_{a\max}$	1.5 mm	Maximum fillet radius

Dimensions

r_{\min}	1.5 mm	Minimum chamfer dimension
D_1	228.6 mm	Shoulder diameter outer ring
d_1	202.28 mm	Shoulder diameter inner ring

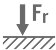





Temperature range

T_{\min}	-30 °C	Operating temperature min.
T_{\max}	200 °C	Operating temperature max.

Calculation factors

f_0	16.5	Calculation factor
-------	------	--------------------

Characteristics

	Radial load
	Axial load in one direction
	Axial load in two directions
	Grease Lubrication
	Oil Lubrication
	Not sealed