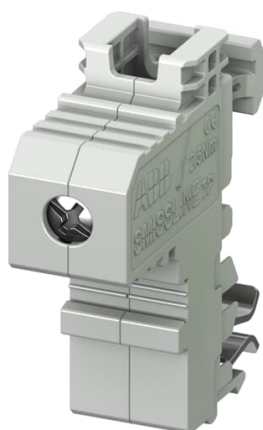


PRODUCT-DETAILS

ZLS913UL

ZLS913UL Terminal



General Information

Extended Product Type	ZLS913UL
Product ID	2CCA183398R0001
EAN	7612271486945
Catalog Description	ZLS913UL Terminal
Long Description	N terminal acc. UL508 for additional socket SMISLINE TP, for external busbars 16 mm ² up to 35 mm ² wire AWG 6 up to AWG 2 with ferrule, max. 1 wire

Technical

Product Name	Terminal
Suitable For	Suitable for SMISLINE TP Plug in system additional socket
Suitable for Product Class	Suitable for SMISLINE TP Plug in system additional socket
Rated Current (I _n)	63 A

Environmental

RoHS Status	Following EU Directive 2011/65/EU and Amendment 2015/863 July 22, 2019
Environmental Information	2CCC413008D0205

Dimensions

Product Net Width	9 mm
Product Net Height	37 mm
Product Net Depth / Length	50 mm
Product Net Weight	30 g
Product Net Length	50 mm

Container Information

Package Level 1 Units	carton 1 piece
Package Level 1 Width	10 mm
Package Level 1 Height	47 mm
Package Level 1 Depth / Length	46 mm
Package Level 1 Gross Weight	90 g
Package Level 1 EAN	7612271486945

Ordering

Minimum Order Quantity	1 piece
Customs Tariff Number	85389040
Country of Origin	Bulgaria (BG)
Selling Unit of Measure	piece

Certificates and Declarations (Document Number)

Declaration of Conformity - CE	9AKK107991A9646
Environmental Information	2CCC413008D0205
Instructions and Manuals	9AKK107680A2315
RoHS Information	9AKK107991A9646

Popular Downloads

Data Sheet, Technical Information	9AKK107492A6192
Instructions and Manuals	9AKK107680A2315
Dimension Diagram	9AKK107492A6192

Classifications

ETIM 6	EC001522 - Busbar
ETIM 7	EC001522 - Busbar
ETIM 8	EC001522 - Busbar
EPLAN Catalog Tree	Mechanics / Busbars / General
WEEE Category	5. Small Equipment (No External Dimension More Than 50 cm)
WEEE B2C / B2B	Business To Business
CN8	85389040
Object Classification Code	F

Categories

Low Voltage Products and Systems → Modular DIN Rail Products → Plug-in Distribution Systems Accessories → Incoming Blocks and Terminals, Loose Accessories

