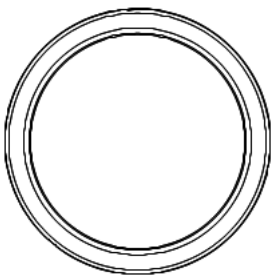
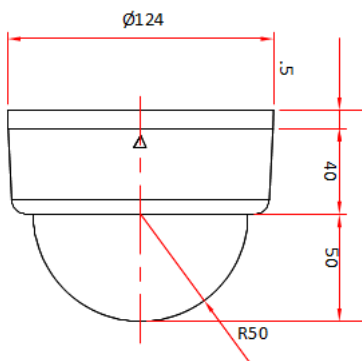
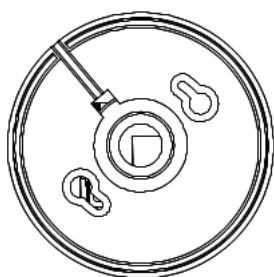




The performance features at a glance

- H.264, MPEG4 & MJPEG
- 1/4" Progressive Scan CMOS
- 3.6mm lens
- Motion detection / Analysetools
- Maximal resolution 640 x 480
- Audioin- and output



High versatility

The ZN-D100VE is a miniature indoor dome and boasts a compact size. Thus, it can easily be placed inconspicuously as possible and has little influence on the immediate environment.

Outstanding advantages

Already integrated is a 3.6 mm lens. This results in a large wide-angle. 550 TV lines also ensure a sharp image.

The integrated image enhancement can also operate this dome at 0.1 lux.

High-performance technology

Superb picture quality is achieved thanks to the H.264 compression and at the same time the required network bandwidth is significantly reduced.

The ZN-D100VE can is capable of delivering 25 frames per second, thus helping to bring smooth moving images in real time.

Other special features

Integrated are analysis function, which go beyond the - also integrated - motion detection.

The ZN-D100VE also has an audio input and an audio output. The audio codec is widely used G.711.

Order data

Order number	Product description
ZN-D100VE	H.264 mini colour dome camera, 1/4" progressive CMOS, focal length 3,6 mm, F2.0, 1,0 lux, effective resolution 640x480 (adjustable), 25fps, Dual stream, audio IN/OUT (G.711), 12 VDC/300mA, 124mmØ x 102mm (H), 345g, surface mount enclosure

IP-DOMECAMERA ZN-D100VE

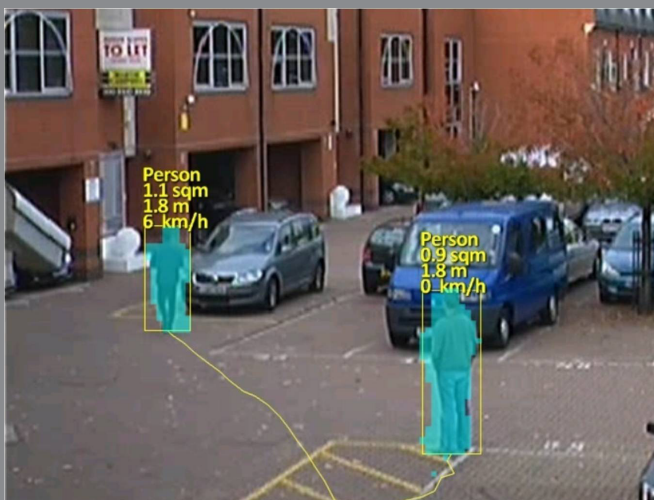


Advantages for the installer

The device is done quickly. Ensure more beneficial features. For this, the 3-axis module counts as well as the included software to configure the camera for use in the network.

With the clear, Web-based configuration, the camera can be easily set up.

Technical specifications	ZN-D100VE
CCD	1/4" VGA CMOS Progressive Scan
Compression format	H.264, MPEG-4, MJPEG
Dualstream	Yes, configurable
Max. resolution	640 x 480
Resolution options	D1 (interpolated), 4CIF (interpolated), VGA, CIF, QCIF
Horizontal lines	550
Video framerate	25 fps
Lens	3.6 mm, F.# 2.0
Day/night switching	-
Minimum illumination	3 Lux color, 0.1 Lux DSS On
Audioin/-output	1 / 1
Audiocodec	G.711
Network interface	10/100 Base-T
Protocols	TCP/IP, UDP/IP, HTTP, RTSP, RTCP, RTP/UDP, RTP/TCP, SNTP, mDNS, UPnP, SMTP, SOCK, IGMP, DHCP, FTP, DDNS, SSL v2/v3, IEEE 802.1X, SSH
Operating voltage	12 VDC
PoE	-
Power consumption	290mA
Material	Polycarbonate
Operating environment	0 °C - 50 °C
Dimensions (H x Ø)	102mm x 124mm
Weight	345g



Intelligent algorithm:

- Tracking objects ✓
- Counting (vehicles, people) ✓
- Loitering detection ✓
- Video stabilization ✓
- Classification ✓
- Object watch ✓

VCA - A brief description

Video Content Analysis is an active component which can analyse the content of the liveimage. It goes far beyond a simple motion detection. Our VCA has a complex algorithm which is capable of performing several tasks like counting or tracking.

VCA - Where and why?

There are many applications where VCA comes into play. Think of counting vehicles which use a specific road. Think of a store whose owner wants to know the number of visitors. Think of detecting objects removed or put into place. Many more situations make our powerful VCA useful. Trust VCA and let it do the job it's made for.

VCA - Complicated and expensive?

The intelligent algorithm, an user friendly setup via browser and helpful tools support you during the setup. Several analytics are already included as a standard like intruder and perimeter detection, camera shake cancellation and camera temper detection.

Optional are more analytics available as mentioned on top, like loitering detection.

With VCA are the following GANZ-Products available:

Cameras	Decoder
ZN-Y11VPE	ZN-S100V
ZN-NH21VE	ZN-S1000VE
ZN-NH(W)11VPE	ZN-RS4012VE
ZN-D100VE	ZN-RS4040VE
ZN-D(N)T350VPE	