

BoPad

Hand-held enclosure, IP40 (IP65)



BOP 500-9005

Order no.: 35150015

* = Available on request.

Characteristics

Colour of enclosure group
Black, similar to RAL 9005

Colour of enclosure group
Black

Protection class
IP 40, 65

Enclosure Material
Enclosures: ABS

Seal / impact protection: TPE

For details see technical information

Scope of delivery

Lid and base, 4 screws

Note

Upgradable to IP65 with design seal BOP_ DI.

Important!

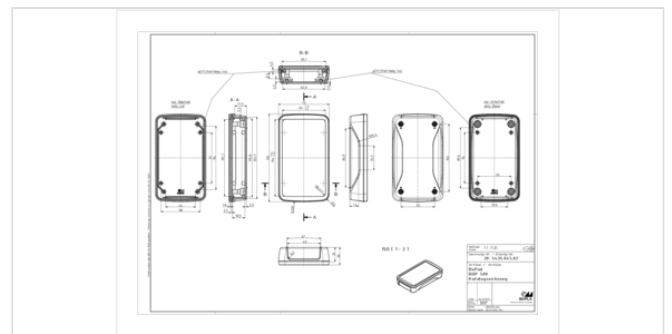
To compensate for pressure when temperatures change and cause moisture in the enclosure, we recommend that you use a pressure compensation element.

» Additional information

Dimensions

Dimensions
130 x 75 x 26 mm

Product drawing



Technical documentation / Downloads

Technical drawings

3D product data in STEP format: Registration necessary

Drawing for mechanical processing: 35150015 BOP-500-9005-G.dxf (1.2 MB)

Milling contours are shown here as a DXF file. (Sub D, USB, HDMI, cable glands, ...)

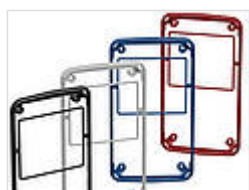
Product drawing in PDF format: 35150015 BOP-500-9005.pdf (197.1 KB)

Product drawing in DXF format: 35150015 BOP-500-9005.dxf (2.0 MB)

Drawing for max. PCB dimensions in PDF format: 35150015 BOP-500-9005-pcb.pdf (154.8 KB)

Drawing for max. PCB dimensions in DXF format: 35150015 BOP-500-9005-pcb.dxf (927.6 KB)

Matching accessories



Design seal, IP65

35250005	BOP 500 DI-9005	For BOP 500, 520	Black
35250006	BOP 500 DI-9016	For BOP 500, 520	White
35250000	BOP 500 DI-5005	For BOP 500, 520	Signal blue
35250001	BOP 500 DI-3001	For BOP 500, 520	Signal red



Impact protection

35350005	BOP 500 S-9005	Black
35350000	BOP 500 S-5005	Signal blue
35350001	BOP 500 S-3001	Signal red
35350003	BOP 500 S-1003	Signal yellow



Screw covers for enclosure screws

35007405	BOP-SA-9005	Black
----------	-------------	-------



Screws (SHR) and distance bolts (DIBLZ) for mounting bosses in plastic enclosures

59006190	SHR Z KA25x6	SD = 2.5 / ND = 2.0 / KD = 4.4
----------	--------------	--------------------------------