

**D15P24A4GV00LF - D-Subminiature Delta D : Signal 15 way Pin Straight Solder, 200 cycles, Harpoons + Female Screw UNC 4 - 40 + Elec cont., 1.6 mm PCB thickness**



[www.fci.com](http://www.fci.com)

## Mating Half

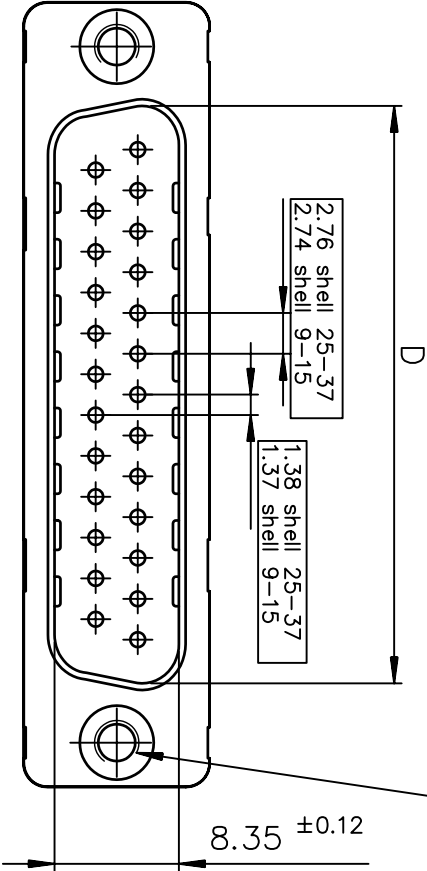
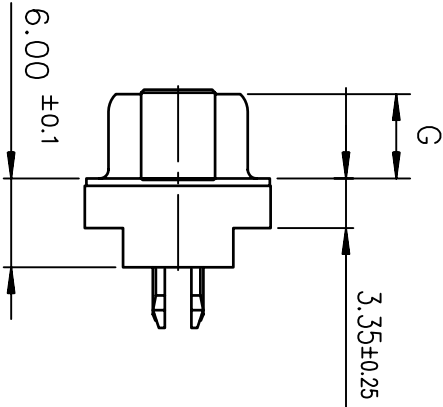
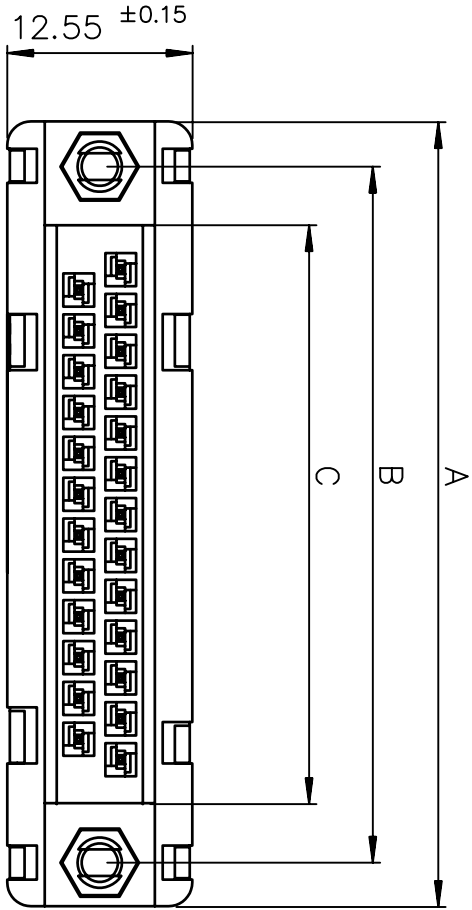
DA15S064TLF

865615SLTLF

## Specifications

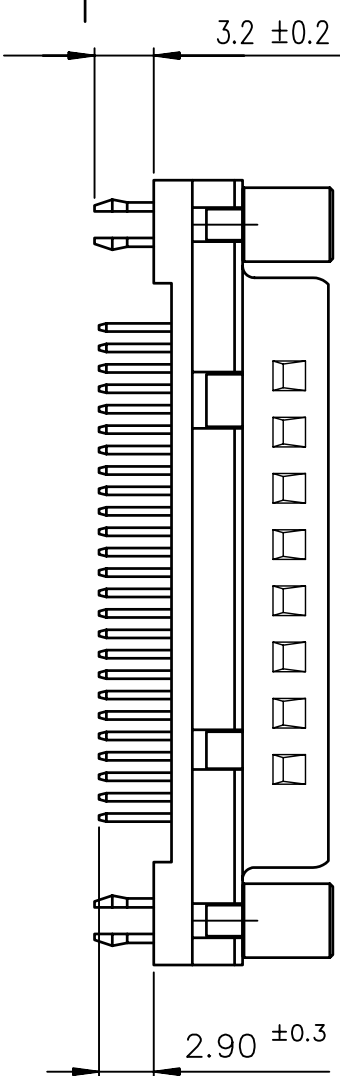
<b>General</b>	
Contact type	Signal
Gender	Pin
Number of contacts (Total)	15
Orientation	Straight
Product Type	Connector
Termination Style	Solder
<b>Dimensional</b>	
Size (Shell)	A
Thickness (Board)	1.6 mm
<b>Electrical</b>	
Current rating	5A Per contact
Resistance (Contact)	< 10 milli-ohms
Voltage rating	300V rms at 50 Hz
Voltage rating (DWV - Dielectric withstanding)	1000V rms
<b>Mechanical</b>	
Durability (Plating - Mating cycles)	Std Class (>200 Mating Cycles)
Extraction force (Mating part)	0.3N min. Per contact
Insertion force (Mating part)	5N max. Per contact
<b>Mounting</b>	
Attachment	Board
Mounting accessory	Harpoons + Female Screw UNC 4-40 + Electrical continuity
<b>Physical</b>	
Plating (Contact)	Gold over Nickel
Plating (Shell)	Bright Pure Tin over Nickel
Plating (Termination)	Matte Tin over Nickel
Temperature (Operating - range)	-55°C to +125°C
<b>Approvals / Certifications</b>	
Approvals / Certifications	Recognized File E 118235 (R)

Other Features	
Most Popular Configuration	Yes



Threaded UNC 4.40 SELLERS

SHELL	A±0.38	B±0.12	C±0.10	D±0.25	E±0.07	G±0.25
09	30.81	24.99	16.96	16.79	10.96	5.90
15	39.14	33.32	25.18	25.12	19.18	5.90
25	53.03	47.04	39.12	38.84	33.12	5.70
37	69.32	63.50	55.68	55.30	49.68	5.70



SHELL	LEAD	FREE PART NUMBER	TIN LEAD PART NUMBER	DESIGNATIONS
09	D09P24A6GV00LF	D09P24A6GV00		HEADER 9 CTS STRAIGHT-SOLDER TO BOARD-PCB HARPOON-SCREWLOCK -ELEC.CONTIN.
15	D15P24A6GV00LF	D15P24A6GV00		HEADER 15 CTS STRAIGHT-SOLDER TO BOARD-PCB HARPOON-SCREWLOCK -ELEC.CONTIN.
25	D25P24A6GV00LF	D25P24A6GV00		HEADER 25 CTS STRAIGHT-SOLDER TO BOARD-PCB HARPOON-SCREWLOCK -ELEC.CONTIN.
37	D37P24A*GV00LF	D37P24A*GV00		HEADER 37 CTS STRAIGHT-SOLDER TO BOARD-PCB HARPOON-SCREWLOCK -ELEC.CONTIN.

V =SCREWLOCK Threaded UNC 4.40 sellers

4 = Performance level PL3 ≥ 200 OPERATIONS —  
6 = Performance level PL1 ≥ 500 OPERATIONS —

SHELL	LEAD	FREE PART NUMBER	TIN LEAD PART NUMBER	DESIGNATIONS
09	D09P24A*GI00LF	D09P24A*GI00		HEADER 9 CTS STRAIGHT-SOLDER TO BOARD-PCB HARPOON-SCREWLOCK -ELEC.CONTIN.
15	D15P24A*GI00LF	D15P24A*GI00		HEADER 15 CTS STRAIGHT-SOLDER TO BOARD-PCB HARPOON-SCREWLOCK -ELEC.CONTIN.
25	D25P24A*GI00LF	D25P24A*GI00		HEADER 25 CTS STRAIGHT-SOLDER TO BOARD-PCB HARPOON-SCREWLOCK -ELEC.CONTIN.
37	D37P24A*GI00LF	D37P24A*GI00		HEADER 37 CTS STRAIGHT-SOLDER TO BOARD-PCB HARPOON-SCREWLOCK -ELEC.CONTIN.

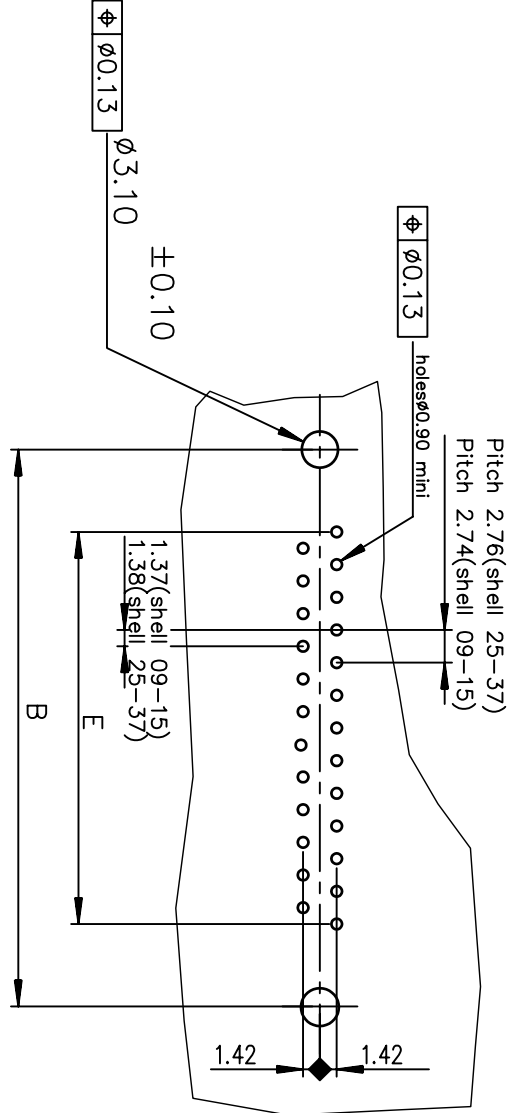
I =SCREWLOCK Threaded M3

4 = Performance level PL3 ≥ 200 OPERATIONS —  
6 = Performance level PL1 ≥ 500 OPERATIONS —

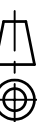
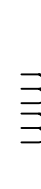
GENERAL CHARACTERISTICS AND ROHS INFORMATIONS:

SEE DRAWING C01-8646-0000

European Views



rev	ecn no	dr	date
A	-	BAR	2003/04/16
B	LS05-001	MPE	2005/03/14
C	LS05-0056	LGO	2005/07/07
D	LS06-0097	LGO	2006/07/28
E	I09-0268	NG	2009-11-24
F	I10-0059	NG	2010-02-23
-	-	-	-

www.fciconnect.com				surface ISO 1302		✓	tolerance std ISO 406 ISO 1101		projection 		mm 	
TOLERANCES UNLESS OTHERWISE SPECIFIED												
Dr	JARRY	1995/08/11	ANGULAR		LINEAR		0.X		±0.1	size A3	Scale 2	
Eng	PESSON	1995/08/11					0.XX		±0.1	ECN	I10-0059	
Chr	NIRMAL GEORGE	2010-02-23	0.XX	±2°			0.XXX		±0.1			
Appr	SUDHIR VARMA	2010-02-23	Product family				D-SUB		Spec ref -			
FCI		title HEADER DELTA D STD EUROPE				no dwg		C01-8646-0816				Rev. F
catalog no						-		CUSTOMER		sheet 1 of 1		

