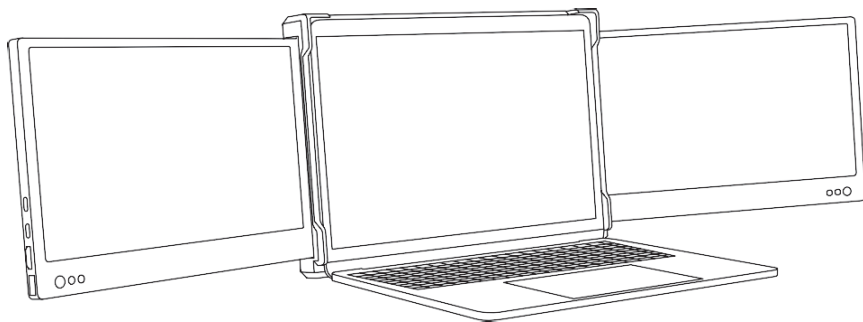




TRI SCREEN

USER MANUAL



www.OKdo.com/gettingstarted

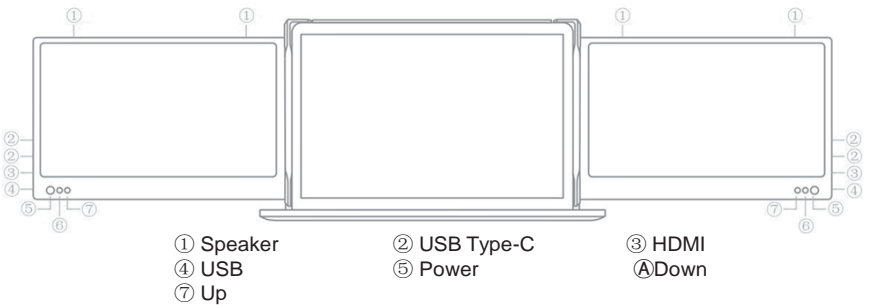
DESCRIPTION

The OKDO TRI SCREEN is a an integrated portable plug-and-play dual monitor, with multiple functional ports, the foldable double screens are simply clipped to your existing laptop display to rapidly build a mobile workshop anywhere. It provides users with an extended or mirrored display to improve productivity across multiple tasks. It could also be connected to smart phones, Raspberry Pi Board, and other devices that support HDMI or video over USB-C.

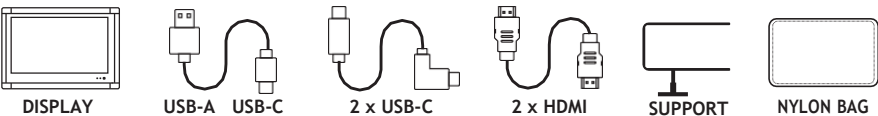
Attach the OKDO TRI SCREEN outrigger in seconds. Clamp it securely onto the back of your laptop display using the spring-loaded mechanism. It fits laptops with existing displays ranging between 13 inches to 17.3 inches, providing maximum flexibility.

Brightness, sound, contrast, and other configuration parameters for each screen of OKDO TRI SCREEN can be adjusted independently, it is equipped with USB / HDMI / USB-Type-C ports. Where a laptop or mobile phone supports combined power and video signal on USB-Type-C, it can realize integrated one-line connection display without the need for separate power and video signal cables to be connected. Any desktop / Laptop / mini PC / set-top box / game console / Raspberry Pi Board with HDMI output interface can be directly connected to the display; note the screen needs an external power supply to function when HDMI is used for the video signal (a regular Type-C mobile phone charging cable can be used).

SPECIFICATIONS



PACKAGE INCLUDES



PARAMETERS

Brand	OKdo
Screen Scale	16:9
Touch or Not	Not touch sensitive
Colour Gamut	72% of the sRGB colour gamut
Product Dimension	315×215×39 mm (Folded State)
Screen Size	11.6 inches
Refresh Rate	60Hz
Resolution	1920×1080 P
Speaker	4
Contrast Ratio	1000:1
Weight	1350g
Panel Type	IPS Wide Viewing Angle
Average Brightness	220CD/m²
TYPE-C Input	5V-20V / 5A MAX
TYPE-C Output	5V-20V / 4.25A MAX
Port	TYPE-C×2 + HDMI + USB 2.0

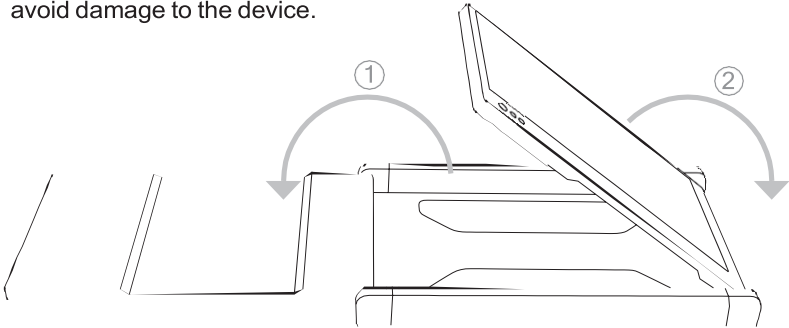
Suggestions for reliable operation

1. Please ensure USB-type-c data wire is firmly connected with device and display interfaces.
2. This product supports all USB-type-C functions (charging and video), integrated one line. If screen fails to be powered on or restarted, please supply external power of 5 V, 2A.

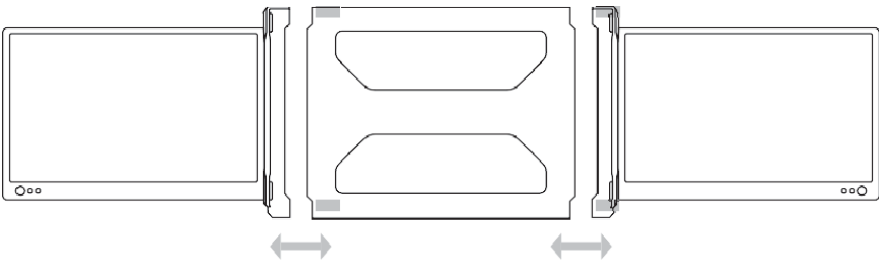
OPERATING INSTRUCTION

Open Dual Screen

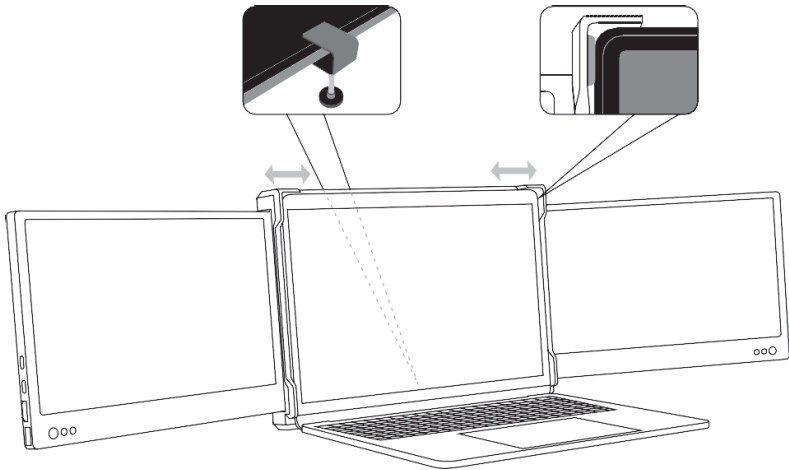
*Note: The opening and closing procedure must be operated in sequence to avoid damage to the device.



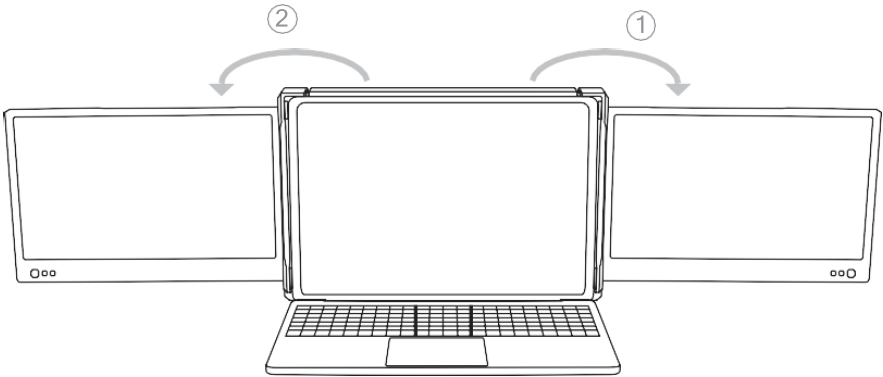
Stretch Outrigger



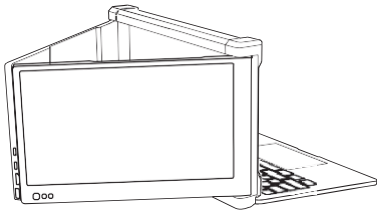
Fix Device to laptop and add the support foot



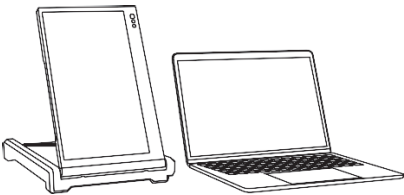
Open Dual Screen on laptop



Dual screen at 45° with laptop

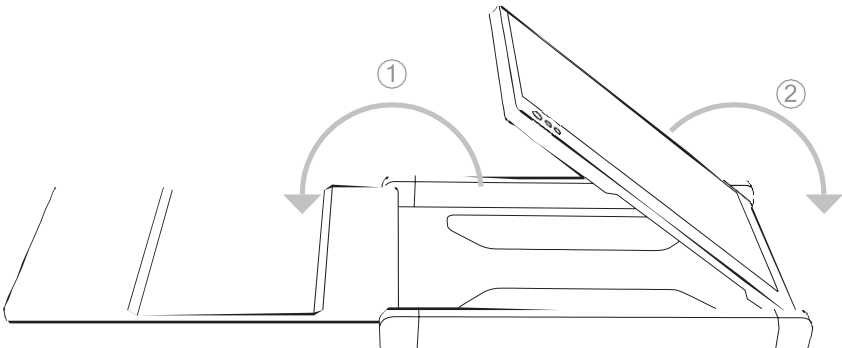


Single vertical screen at 45°



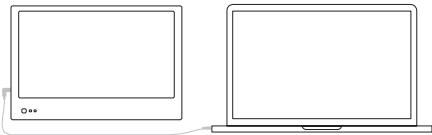
Close Dual Screen

*Note: The opening and closing procedure must be operated in sequence to avoid damage to the device.

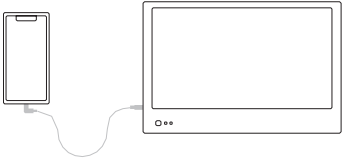


COMPATIBILITY

Integrated One-line on Laptop and Mobile Phone

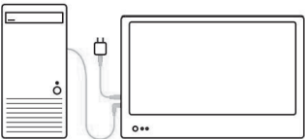


Integrated one-line of TYPE-C Laptop

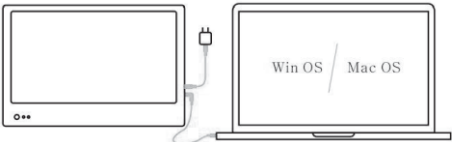


Integrated one-line of TYPE-C mobile phone

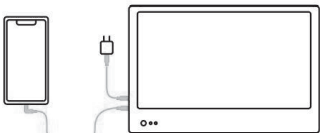
Connection Mode of External Power



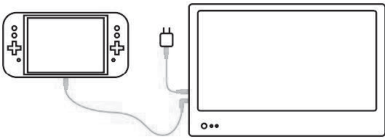
With Desktop computer (external TYPE-C power)



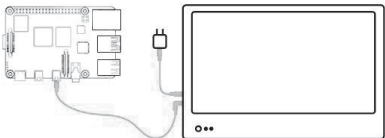
With Laptop (external TYPE-C power)



With Mobile Phone (external TYPE-C power)



With Switch (external TYPE-C power)



With Raspberry Pi (external TYPE-C power)

SCREEN BUTTONS SETTINGS

Keys	Operations	Functions
POWER	1. Short press POWER when in shut down situation;	Screen power on: wait for 15 seconds and image appears after 3S OKdo LOGO is displayed on screen
	2. In situation of power on but no OSD menu: long press POWER for 2 seconds;	Shut down: screen shuts down and no audio outputs
	3. Select cursor in OSD menu interface, short press POWER for 1 second;	Functions as "Confirm"
	4. Long press for 2 seconds in OSD menu;	Functions as "return" key
UP	1. When no OSD menu, short press;	Pop up the shortcut menu of volume progress bar
	2. When there is OSD menu displaying progress, short press;	Click to switch up the current option once or add a parameter with the smallest unit
	3. When there is OSD menu displaying progress, long press;	Shortcut adjust parameters or options
	4. When in OSD menu interface, short press;	Move cursor up
DOWN	1. When there is no OSD menu displayed, short press;	Pop up shortcut key of brightness level
	2. When there is OSD menu displaying progress, short press;	Click to switch down to the next option or subtract a parameter with the smallest unit
	3. When there is OSD menu displaying progress bar, long press;	Shortcut adjust parameters or options
	4. When in OSD menu interface, short press	Functions as moving down the cursor

DELIVERY, STORAGE, AND USAGE REQUIREMENTS

In order to ensure the normal use of this product and prevent accidents such as electric shock or fire, please read and understand all use requirements and operation procedures before using.

Please strictly abide by the following requirements.

1. Please tear off the protective film on the screen surface before use.
2. The DC power supply required by this product is AC / DC power adapter, which should be far away from any heat source and placed in a well ventilated location. The AC power socket and AC power line should be well grounded and able to supply adequate current demand.
3. The DC power input required by this product is 5v-20v \pm 2V
4. Attention should be paid to avoid excessive humidity and dust, so as to avoid circuit corrosion and failure.
5. Screen surface should not be exposed to external force.
6. Do not use sharp tools to touch the screen surface.
7. This product fits typical business and family use. For use in ambient temperatures ranging from -20~60°C is recommended.
8. Please power off power source when finished using the device.



Okdo Technology Limited



Fifth Floor, Two Pancras Square,
Kings Cross, London N1C 4AG