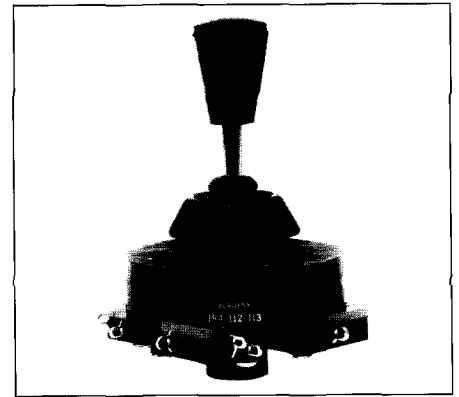
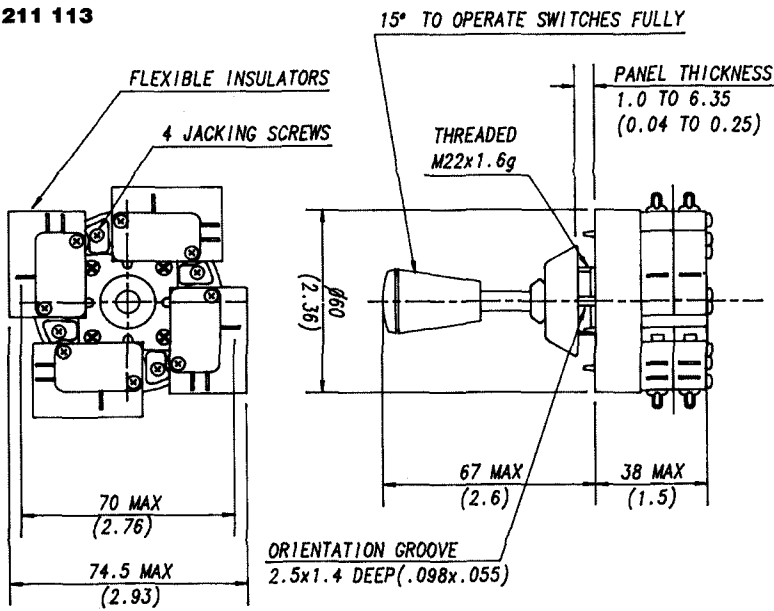


# Joystick Controllers



**J84 211 113**

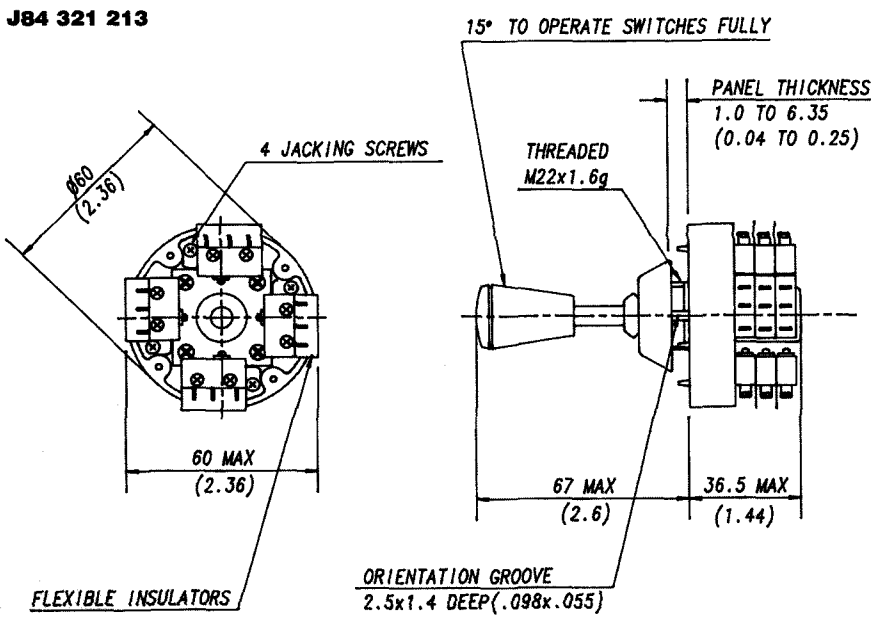


Multi-directional switching assemblies containing Burgess/SAIA miniature or sub-miniature micro switches. They offer positive, convenient, space saving control for many applications.

Facilities include momentary, latching and stirring action. A lift to operate feature is also available to prevent accidental operation.

Typical uses include:- machine tools, presses, fork lift trucks, cranes, earth moving equipment, pedestrian controlled vehicles, railway signalling, baggage handling equipment, stair lifts etc.

**J84 321 213**



# JOYSTICK CONTROLLERS

## Specifications

### Top plate:

Glass fibre reinforced polyamide (PA.6.6)

### Control rod:

Steel chrome plated

### Bezel/knob:

Phenolic

### Cowl/'O' ring:

Silicone rubber

### Temperature range:

-40°C to +85°C

### Mechanical life:

5 x 10<sup>5</sup> cycles minimum

### Type of protection:

Cowl and 'O' ring provide front of panel sealing. For details of insert switch protection refer to the appropriate sections

### Mounting:

Via single hole 22.5mm (0.89in) dia

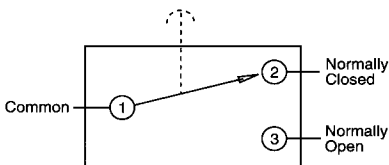
### Insert switches:

V4NT7 – Sub-miniature

XG03 – Miniature

(Other types may be possible please consult SAIA-Burgess Electronics)

### Circuit diagram



## Functions and Facilities

### Gates:

Available with stirring action, 2 or 4 gates.

### Action:

Available with momentary or latching action. Stirring action versions are provided with switches spaced at 90° and can operate adjacent switches simultaneously.

### Operation:

Available as 'normal' or 'lift-to-operate'. The 'lift-to-operate' feature provides a safeguard against accidental operation where the control rod must be lifted by a minimum of 1.5mm (0.06in) before it can be moved from the central 'off' position.

### Mounting recommendations:

The complete assembly less bezel should be inserted into the hole in the panel, the bezel should be screwed on to the threaded sleeve until it is finger tight and the unit locked in position by screwing in the four jacking screws.

### V4NT7

Recommended Max. Electrical Ratings		
Voltage	Resistive load	Inductive load
<b>AC</b>	A	A
up to 250	5	5

### XG03

Recommended Max. Electrical Ratings		
Voltage	Resistive load	Inductive load
<b>AC</b>	A	A
up to 250	16	12

Recommended Max. Electrical Ratings		
Voltage	Resistive load	Inductive load
<b>DC</b>	A	A
up to 30	5	3
50	1	1
75	0.75	0.75

Recommended Max. Electrical Ratings		
Voltage	Resistive load	Inductive load
<b>DC</b>	A	A
up to 30	16	16
50	3	1.5
75	1	0.6
125	0.5	0.3
250	0.3	0.2

# JOYSTICK CONTROLLERS

## Standard Joysticks Available

Range	Number of Gates	Switches per Gate	Type of Operations	V4NT7 Switch		XG03 Switch	
				Momentary Action	Latch-in Action	Momentary Action	Latch-in Action
<b>J80</b>	0 stirring action	4 switches at 90° pitch	Normal	<b>J80 141 213</b>		<b>J80 141 113</b>	
			Normal	<b>J82 111 213</b>	<b>J82 121 213</b>	<b>J82 111 113</b>	<b>J82 121 113</b>
<b>J82</b>	2	1	Lift			<b>J82 112 113</b>	
			Normal			<b>J82 211 113</b>	
		2	Lift	<b>J82 212 213</b>			
			Normal				
<b>J84</b>	4	3	Lift		<b>J82 322 213</b>		
			Normal	<b>J84 111 213</b>		<b>J84 111 113</b>	<b>J84 121 113</b>
		1	Lift			<b>J84 112 113</b>	
			Normal	<b>J84 211 213</b>		<b>J84 211 113</b>	
2	Lift			<b>J84 212 113</b>			
	Normal						
3	Lift			<b>J84 321 213</b>			
	Lift			<b>J84 322 213</b>			

For other versions, please contact SAIA-Burgess Electronics.

# JOYSTICK CONTROLLERS

## Ordering References

