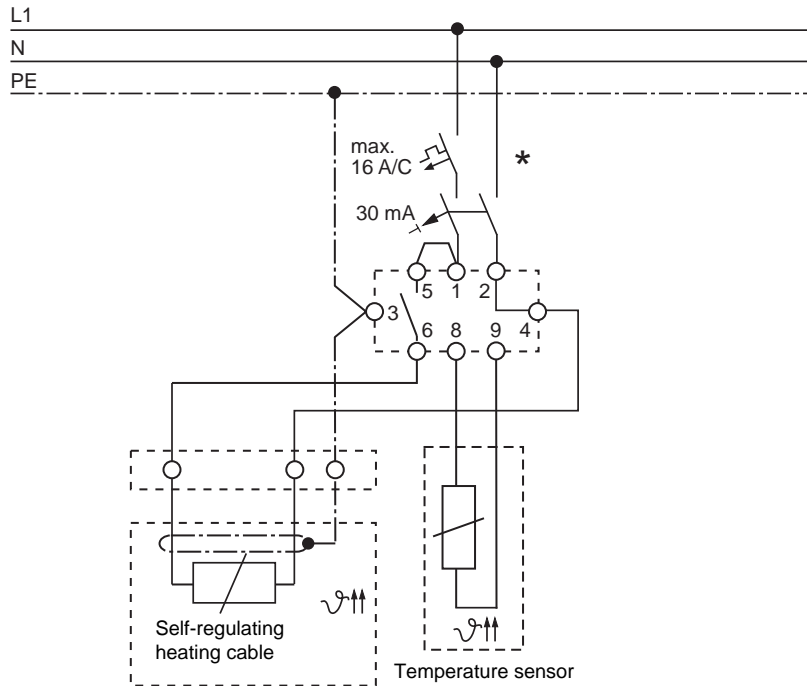
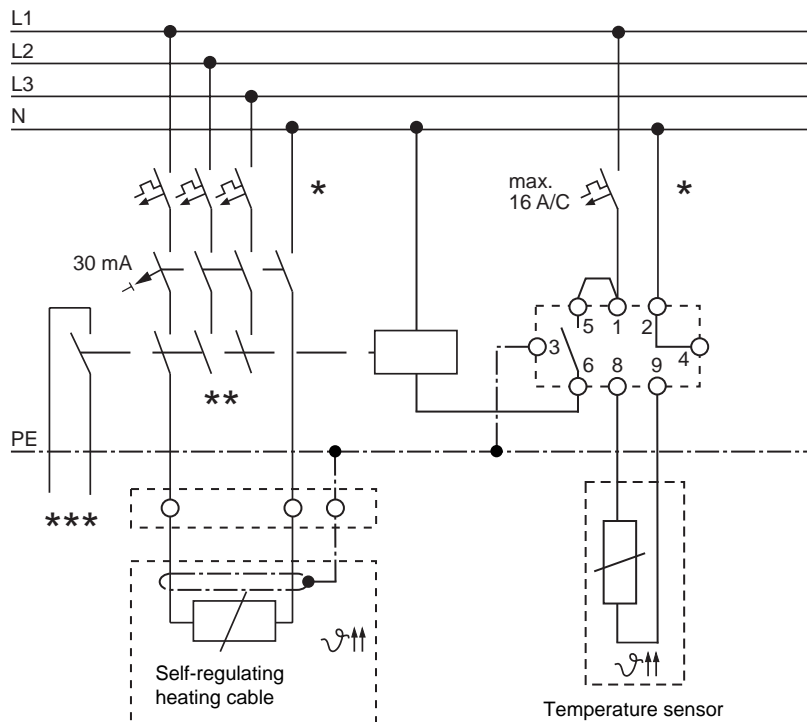


Wiring diagram for thermostat AT-TS-13 or AT-TS-14

AT-TS-13/14 direct



AT-TS-13/14 with contactor



- * Two- or four-pole electrical protection by circuit-breaker may be needed for local circumstances, standards and regulations
- ** Depending on the application, one- or three-pole circuit-breakers or contactors may be used
- *** Optional: Potential-free circuit-breaker for connection to the BMS