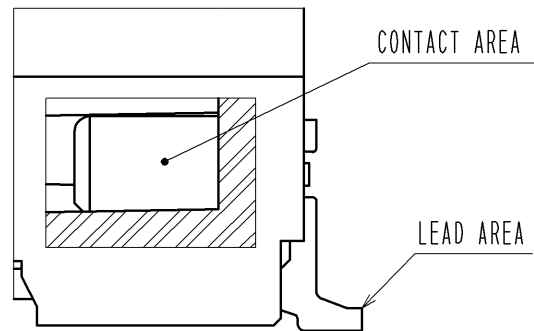
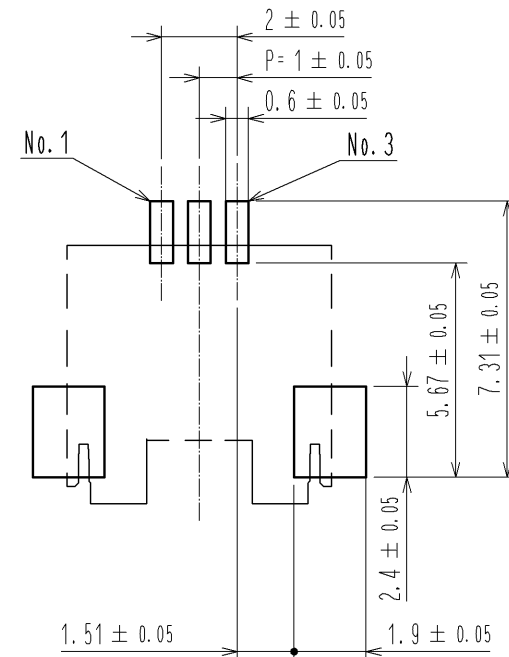


A (10:1)

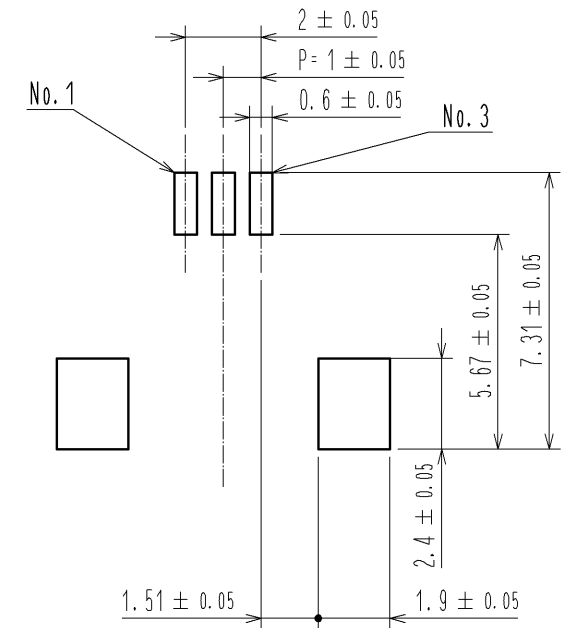


RECOMMENDED PCB LAYOUT (MOUNTING SURFACE SIDE) (FREE)

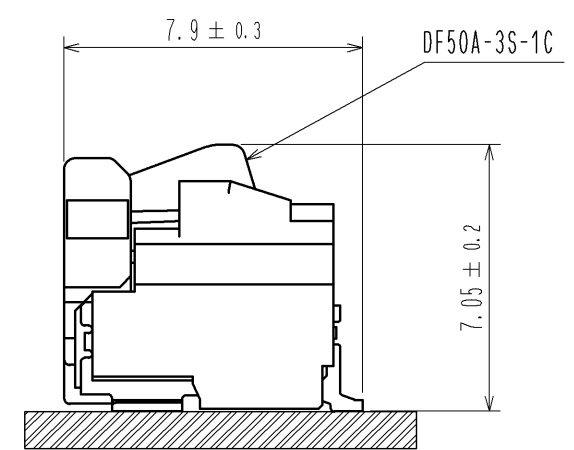
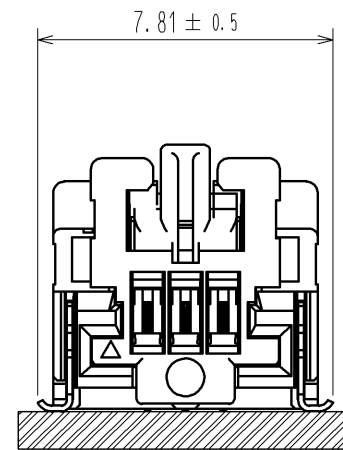


RECOMMENDED METAL MASK (FREE)

THICKNESS : 0.1mm
OPEN AREA RATIO:100%

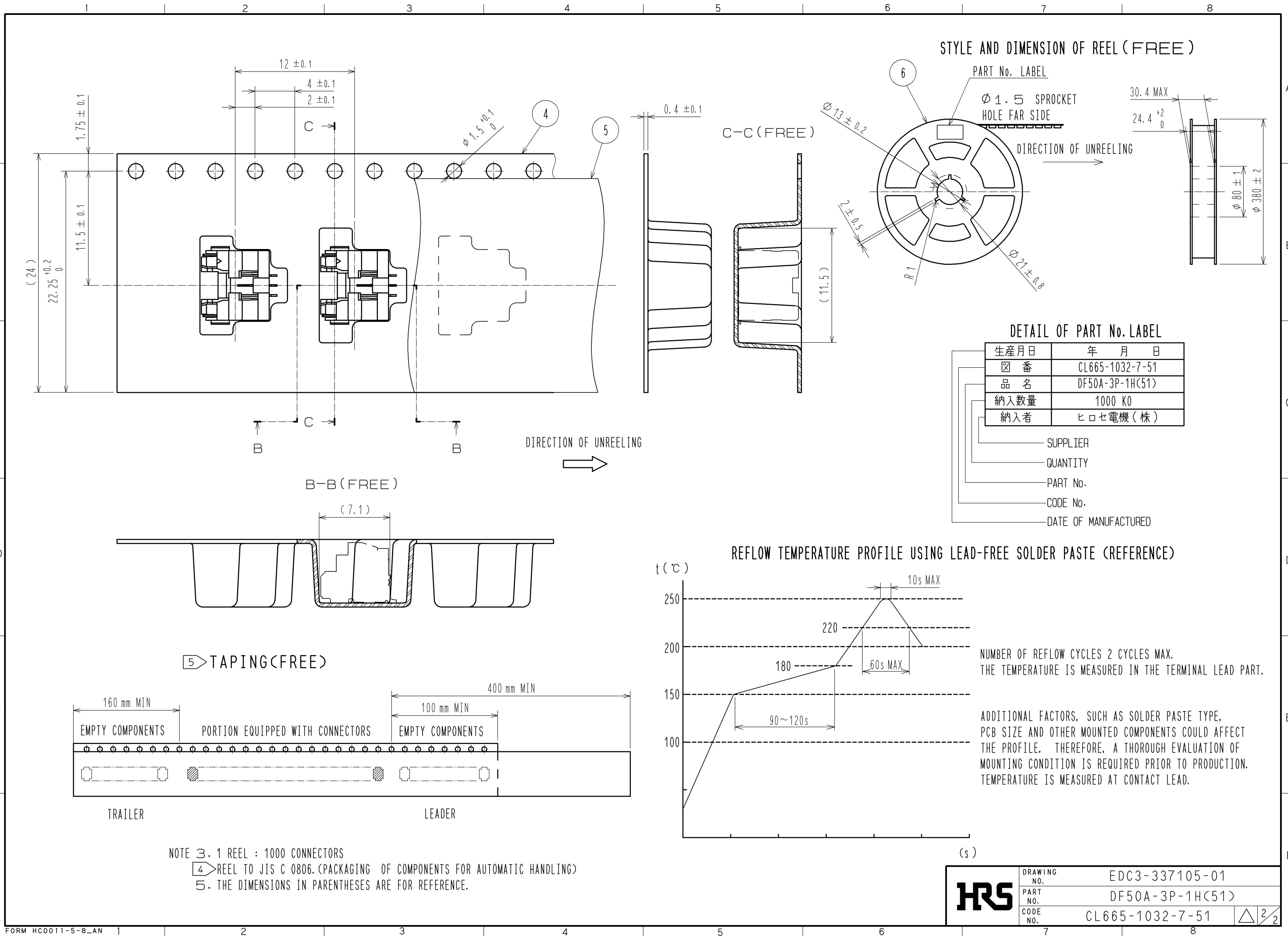


MATING FIGURE(5:1)



- NOTES 1. LEAD CO-PLANARITY SHALL BE 0.1mm MAX
- 2. PLEASE CONSULT HIROSE WHEN THE PRODUCT IS MONUTED TO FPC.

3	BRASS	CONTACT AREA : Sn PLATING 1μm MIN UNDER PLATING : Cu PLATING 0.3μm MIN	6	PS	REEL , BLACK
2	BRASS	CONTACT AREA : Au PLATING 0.05μm MIN LEAD AREA : Au PLATING 0.05μm MIN UNDER PLATING : Ni PLATING 1μm MIN	5	POLYESTER	CLEAR
1	LCP	BLACK , UL94V-0	4	PS	CLEAR
NO.	MATERIAL	FINISH , REMARKS	NO.	MATERIAL	FINISH , REMARKS
UNITS mm		SCALE 5 : 1	COUNT 	DESCRIPTION OF REVISIONS	
HRS HIROSE ELECTRIC CO., LTD.		APPROVED : KI. AKIYAMA 12.06.19	DESIGNED	CHECKED	
		CHECED : HK. UMEHARA 12.06.19	DATE		
		DESIGNED : ST. SATO 12.06.19	DRAWING NO. EDC3-337105-01		
		DRAWN : ST. SATO 12.06.19	PART NO. DF50A-3P-1H(51)		
			CODE NO. CL665-1032-7-51		



HRS	DRAWING NO.	EDC3-337105-01
	PART NO.	DF50A-3P-1H(51)
	CODE NO.	CL665-1032-7-51
		\triangle 2/2